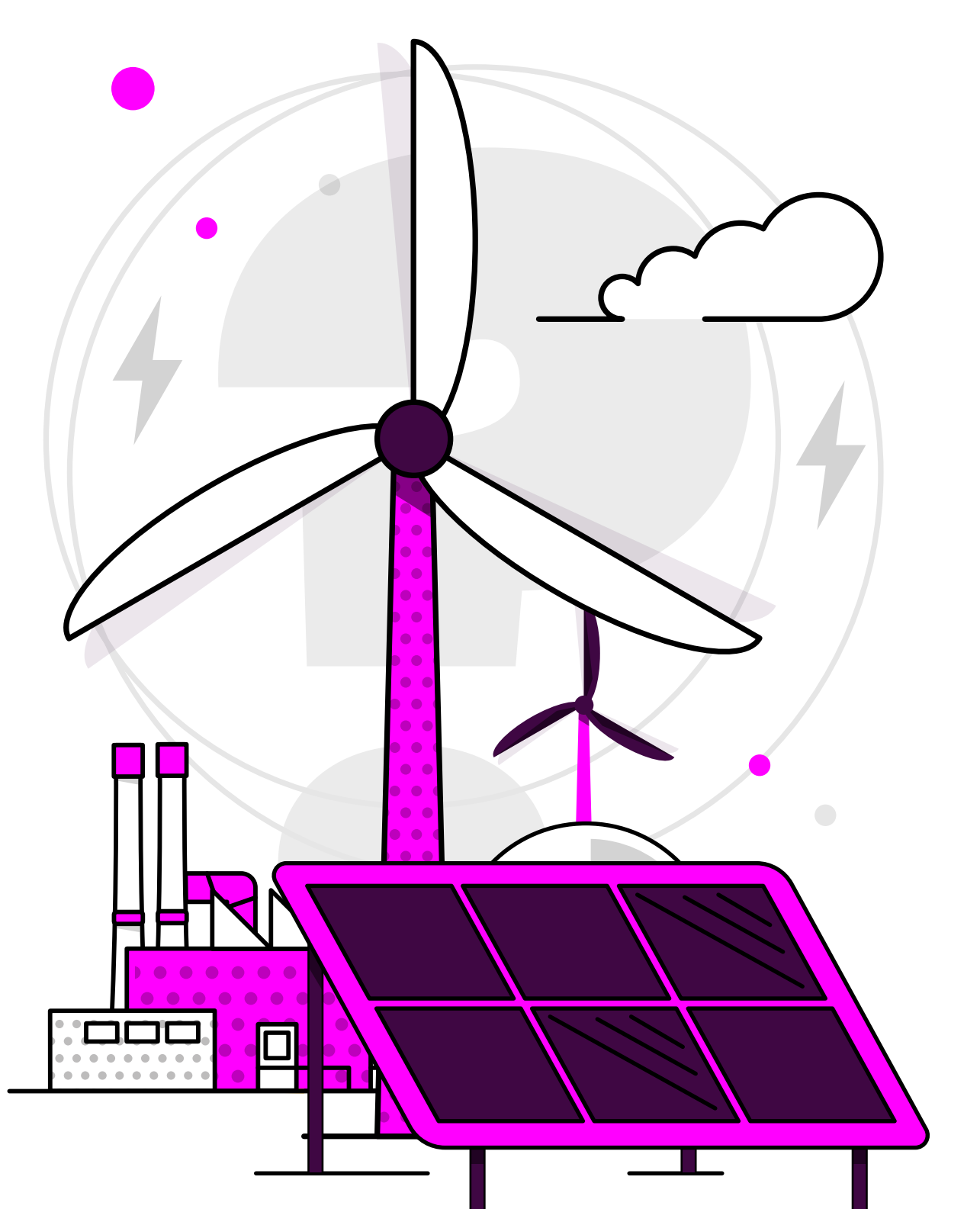


# Britain's Energy Explained: June 2026

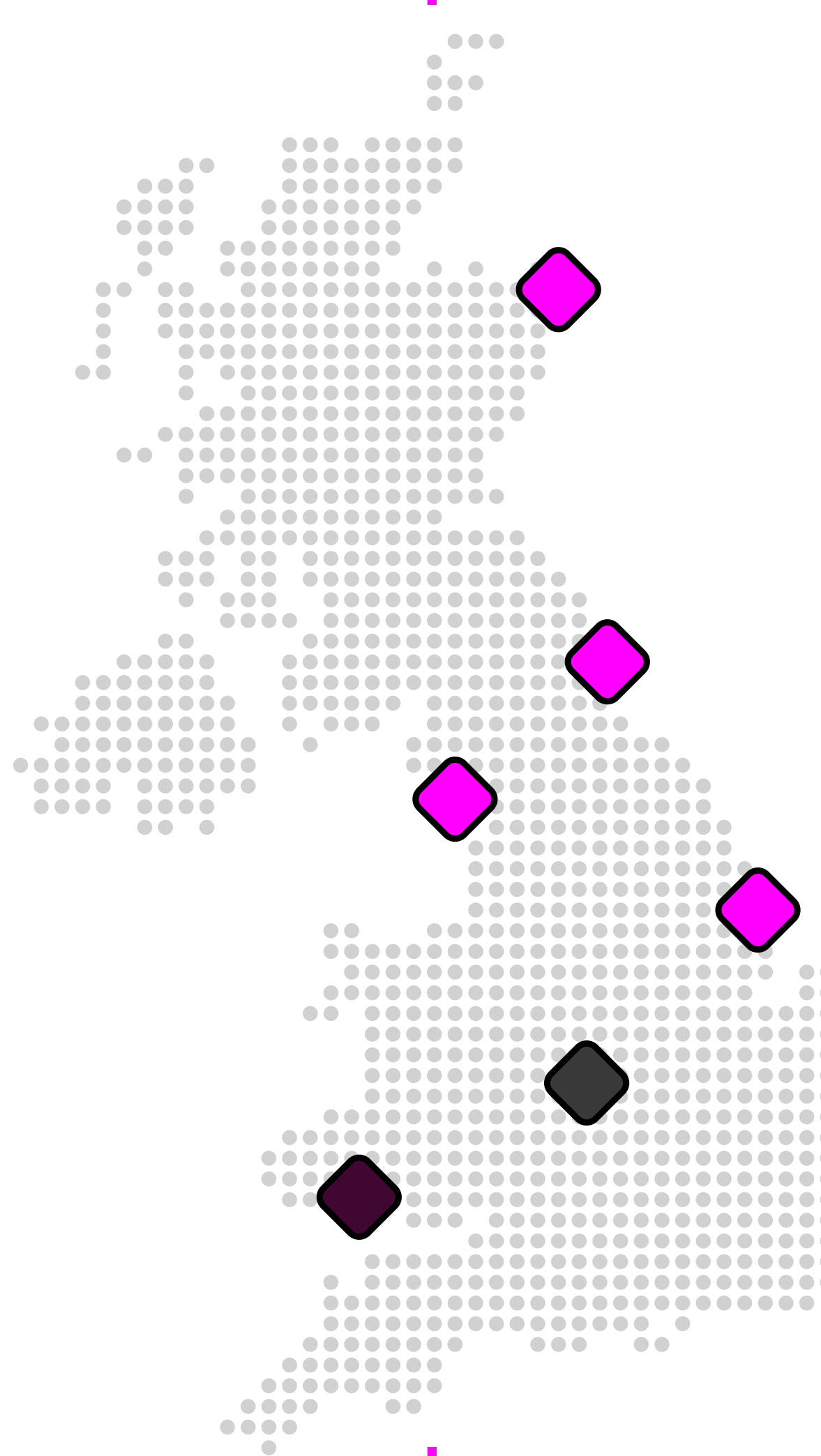


## How was our electricity generated?



		change from previous month	
Gas	26.2%	3.6%	△
Wind	27%	2.3%	△
Nuclear	9.5%	1.4%	▽
Biomass	5.3%	1.9%	▽
Solar	12.1%	0.3%	▽
Imports	15.9%	2.8%	▽
Hydro	1.6%	0.3%	△
Storage	2.3%	-	

## Where has our gas come from?\*



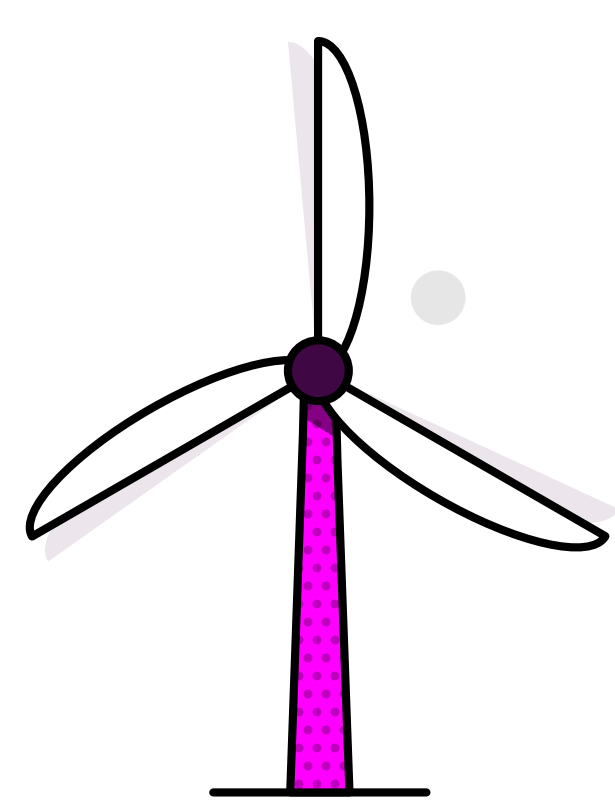
Entry Points		change from previous month	
UK/Norwegian gas fields	90%	7%	△
LNG imports	5%	1%	▽
European imports	0%	-	
Storage withdrawal	5%	6%	▽

## Where is our gas used?

Distribution networks	34%	16%	▽
Power stations	22%	2%	△
EU & Ireland exports	38%	12%	△
Industrial	2%	-	
Storage	4%	2%	△

\*Gas data is yet to reconcile. For most up-to-date gas data, visit [data.nationalgas.com](https://data.nationalgas.com)

## Carbon intensity of electricity



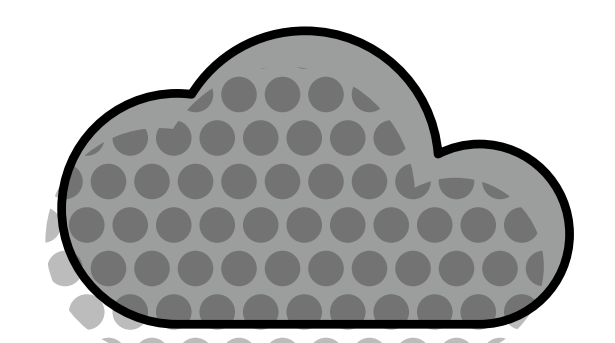
Zero carbon

62% of electricity came from zero carbon sources  
92% peak zero carbon share

132 gCO<sub>2</sub>/kWh average

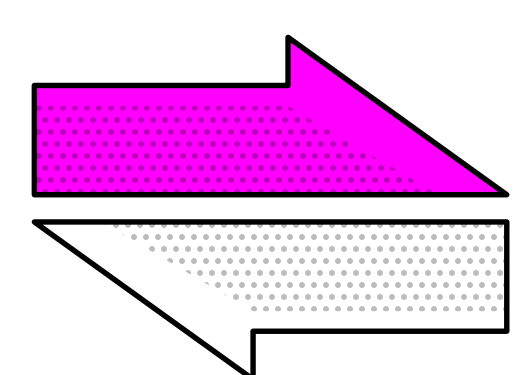
Greenest time of the month 12pm on 13 June

Lowest carbon intensity 38 gCO<sub>2</sub>/kWh

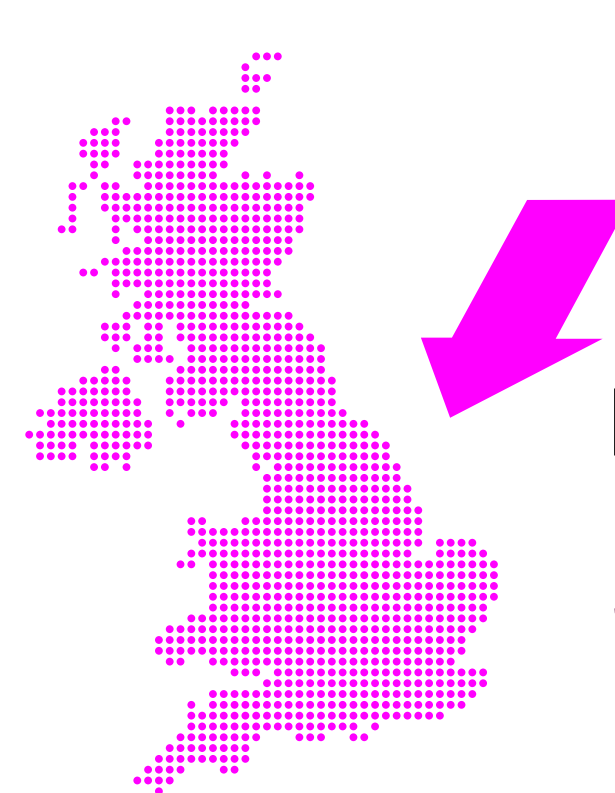


Carbon intensity

## How much electricity we used



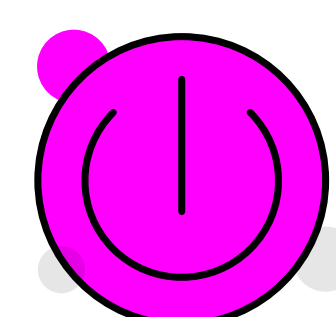
Imports & exports



Energy in  
3,545 GWh

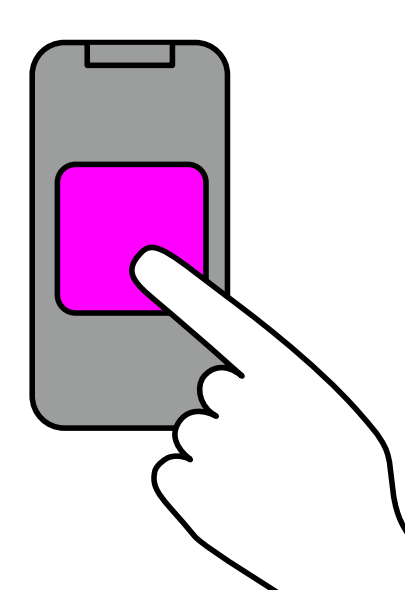
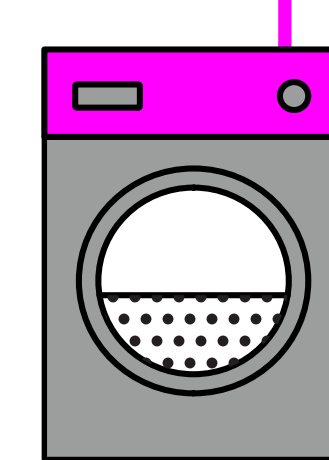


Energy out  
1,268 GWh



Demand

22 TWh run through network (that's 22 billion washing machine cycles).  
Peak demand time was 6:30pm on 25 June.



View in real-time

To view our data in real-time, please download the NESO app for Apple or Android. Or visit [carbonintensity.org.uk](https://carbonintensity.org.uk)