

**NESO**  
**National Electricity**  
**Transmission**  
**System**  
Status report

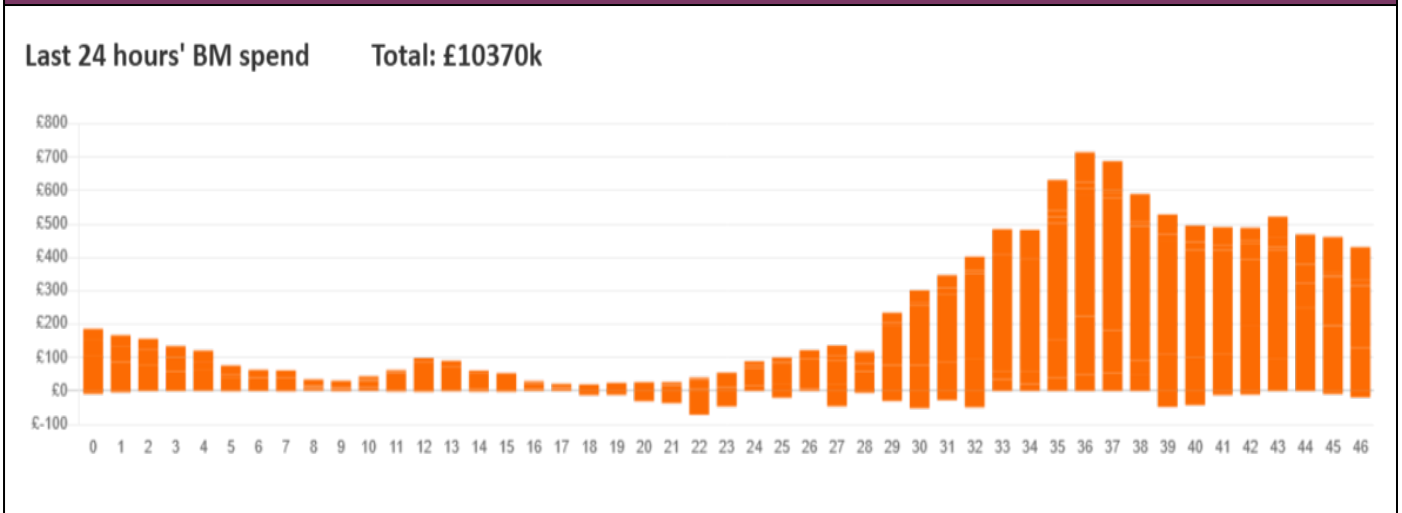


NESO National Electricity Transmission System Status Report  
Tuesday 24 March 2026

Today's High Level Risk Status Forecast for the next 24h			
General Status		Voltage	
Demand		System Inertia	
System Margins		Weather	
Generation		Transmission	
Active Constraints			
<a href="#">System Warning</a>			

<a href="#">Today's Minimum De-Rated Margin</a>	19900 MW (SP 39)	
Current BMU Largest Loss Risk	Generation	1500MW
	Demand	560MW

Balancing Costs



Yesterday's Market Summary

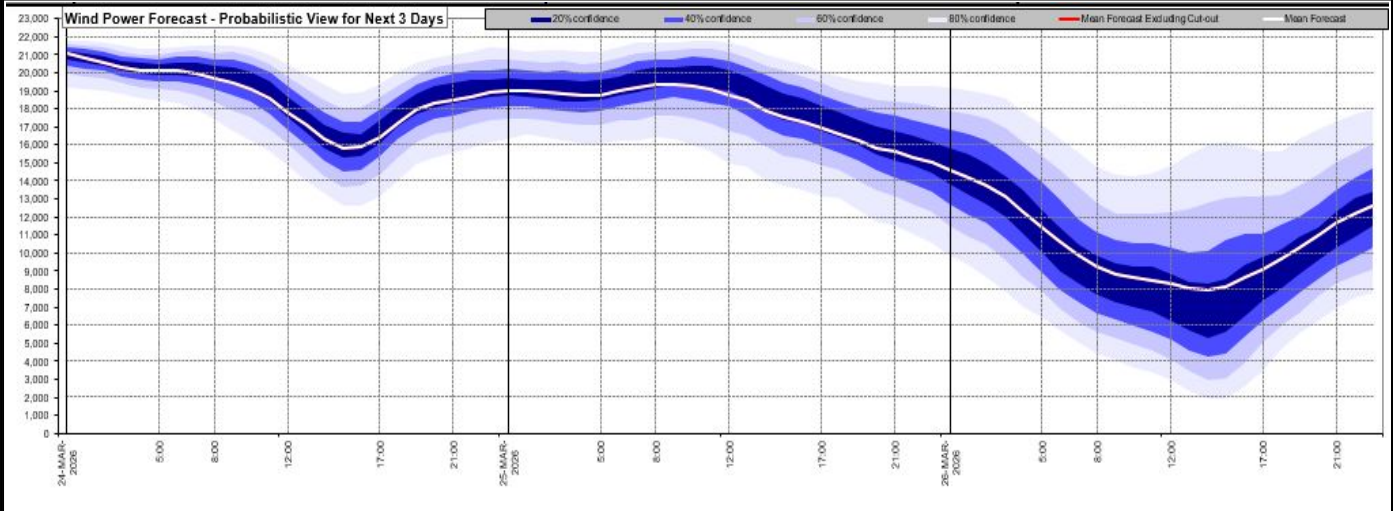
<a href="#">Cash Out Price (Max)</a>	£165.90 / MWh (SP 38&39)
<a href="#">Cash Out Price (Min)</a>	£00.05 / MWh (SP 46)
<a href="#">Peak Demand Yesterday</a>	35,207 MW (SP 39)
<a href="#">Minimum Demand</a>	22,073 MW (SP 9)

Interconnector

Net Transfer Capacity (MWs)

Today	Import	Export	Remarks
Netherlands (BritNed)	1000	1000	Fully Available
Belgium (Nemo)	1000	1000	Fully Available
Ireland (EWIC)	500	500	Fully Available
Northern Ireland (MOYLE)	500	500	Fully Available
Norway (NSL)	1400	1400	Fully Available
France (IFA2)	1000	1000	Fully Available
Ireland (GreenLink)	500	500	Fully Available
Viking Link	1400	1400	Fully Available
France (ElecLink)	1000	1000	Fully Available
France (IFA)	1500	1500	Unplanned outage

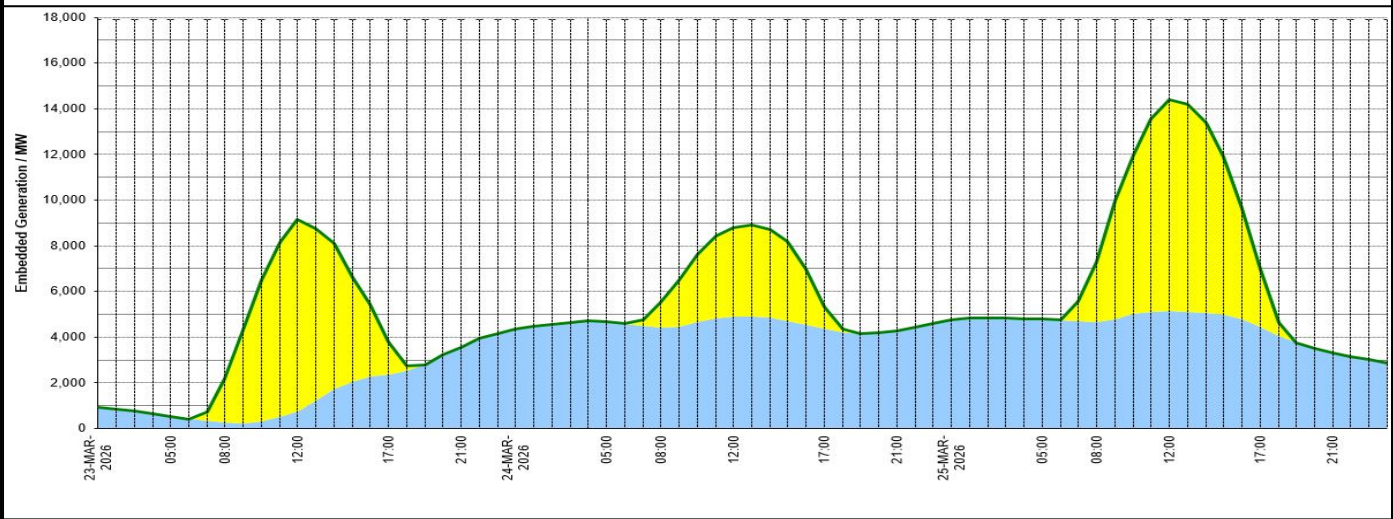
### Wind Power Forecast



### Expected embedded generation (MWs)

#### Embedded Generation Forecast

	23-MAR-2026					24-MAR-2026					25-MAR-2026						
	05:00	08:00	12:00	17:00	21:00	00:00	05:00	08:00	12:00	17:00	21:00	00:00	05:00	08:00	12:00	17:00	21:00
Solar (MW)	0	1916	8385	1449	0	0	0	1097	3882	967	0	0	0	2664	9256	2491	0
Wind (MW)	539	256	751	2350	3542	4373	4658	4425	4898	4363	4279	4758	4785	4648	5128	4469	3322
STOR (MW)	0	0	0	0	0	0	0	0	0	0	0	0	0	0	0	0	0
<b>Total (MW)</b>	<b>539</b>	<b>2172</b>	<b>9136</b>	<b>3799</b>	<b>3542</b>	<b>4373</b>	<b>4658</b>	<b>5522</b>	<b>8780</b>	<b>5330</b>	<b>4279</b>	<b>4758</b>	<b>4785</b>	<b>7312</b>	<b>14384</b>	<b>6960</b>	<b>3322</b>



Weather	Source	Commentary
Latest forecast (Summary)	<a href="#">Met Office</a> <a href="#">SEPA</a> <a href="#">Natural Resources Wales</a>	<p><b>Today:</b> Largely dry but rather cloudy across southern parts today. Elsewhere, a band of rain, occasionally heavy, will gradually move southeastwards, with scattered blustery showers following behind. Widely windy, with gales in the north where it will also turn colder later.</p> <p><b>Tonight:</b> The band of rain continuing to move southeastwards, clearing East Anglia during the early hours. Scattered blustery showers following, with these turning wintry in the north.</p>
General Weather Concerns e.g. wind, rain, snow, flooding, GB Weather Warnings	<a href="#">Met Office</a> <a href="#">Weather Warning</a> <a href="#">England Flood Warning</a> <a href="#">SEPA</a> <a href="#">Natural Resources Wales</a>	<p><b>UK Weather Warnings</b> No weather warnings are in force for the UK.</p> <p><b>Flood Warnings</b> 3 flood warnings and 22 flood alerts issued for England. 0 flood warning and 0 flood alerts issued for Scotland 0 flood warnings and 0 flood alerts issued for Wales</p>

Further Information	
BM Reports	<a href="https://www.elexon.co.uk/data/kinnect-insights-solution/">https://www.elexon.co.uk/data/kinnect-insights-solution/</a>
System Balancing Reports	<a href="https://www.neso.energy/industry-information/industry-data-and-reports/system-balancing-reports">https://www.neso.energy/industry-information/industry-data-and-reports/system-balancing-reports</a>
Forecast Volumes and Costs	<a href="https://www.neso.energy/industry-information/industry-data-and-reports/forecast-volumes-and-costs">https://www.neso.energy/industry-information/industry-data-and-reports/forecast-volumes-and-costs</a>