

# RESP Methodology

## Areas for further development

### Specification of Strategic Investment Need

03 March 2026, 10am – 11:30am

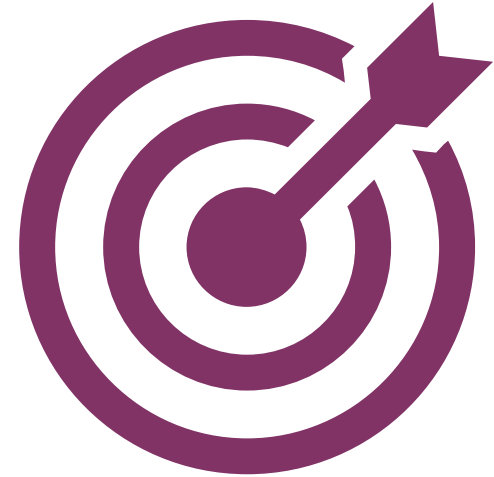
- Elgan Roberts, Strategic Lead – Wales
- Jonny Sadler, RESP Engagement and Communications Manager
- Faith Natukunda, RESP Senior Technical Delivery

# Agenda

1. Welcome – Jonny Sadler
2. Presentation (15 mins) – Elgan Roberts
3. Plenary Q&A (10 mins) – Elgan Roberts
4. Breakout workshops (30 mins) – Approx. 10 per group, plus one NESO facilitator per group
5. Feedback & discussion (25 mins) – nominated participant or facilitator to feed back
6. Next steps (5 mins) – Jonny Sadler

# Session aims

1. NESO presents our updated proposals
2. NESO answers any clarification questions
3. Attendees provide feedback on our proposals



# Link

[New feedback window open: RESP Methodology – areas for further development | National Energy System Operator](#)



# Specification of Strategic Investment Need

Elgan Roberts

# Specification of Strategic Investment Need

Further work has focused on clarifying the value-add from the SI Need process and the output delivered to the networks.

## Areas of Further Work

Topic	Proposed updates to draft methodology
<p><b>1</b> Clarifying the value-add from the SI Need process</p>	<p>NESO Proposes:</p> <p>A clearer explanation in the 'Overview of Specification of Strategic Investment Need' section to make explicit that the Strategic Investment Need component is not intended to identify all areas requiring strategic network investment across a nation or region, but instead focuses only on needs that are both <b>strategic and complex</b>, highlighting the added value NESO provides as the strategic energy planner for GB.</p>
<p><b>2</b> The output delivered to the networks ("the SI Need Specification")</p>	<p>NESO Proposes:</p> <p>An overall approach for producing SI Need specifications, including principles for engagement with networks and stakeholders, and clearly defining the roles and responsibilities within the process.</p> <p>Further refinement and definition of the expected output "the SI Need Specification", including the form and content of the SI Need specifications with illustrative examples and strengthened proposal for the needs case element that underpins the investment justification.</p>

# Clarifying the value-add from the SI Need process

Topic 1

Elgan Roberts

# Responding to Feedback

Stakeholders expressed a need for further clarity on the intention of the Strategic Investment Need component and the value-add from NESO in the process.

# Clarifying the value-add from the Strategic Investment Need process

In our proposed update we have clarified the following:

1. The **Strategic Investment Need component is not intended to identify all areas of strategic network investments** in a nation or region. The vast majority of investment needs (strategic or otherwise) will be informed through the Nations and Regions Context, Consistent Planning Assumptions, Pathways and Spatial Context.
2. Strategic Investment Need will focus only on **strategic and complex** needs where NESO can **add value by identifying proactive, ahead-of-need investment** to unlock development and growth.
3. NESO will add value as GB's strategic energy planner by **coordinating stakeholders**, enabling **effective information flow**, and **applying independent judgement** to specify areas of strategic investment need.

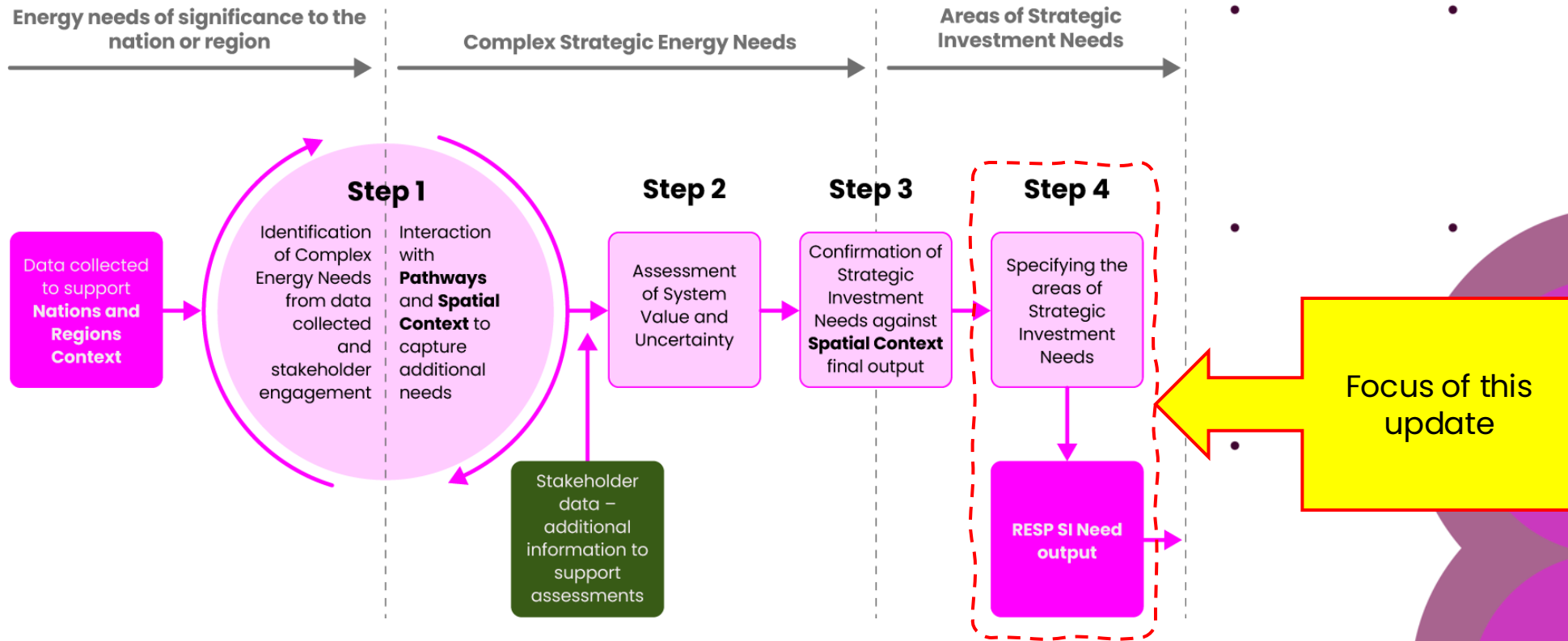
# The output delivered to the networks (“the SI Need Specification”)

Topic 2

Elgan Roberts

# Responding to Feedback

We received early feedback that the 'Specification' and 'Needs case structure' sub-sections of the Draft Methodology lacked detail in relation to the output delivered to the networks and our approach for producing the output.



# SI Need Output: the Specification



## **A specification that sets out the:**

- a. WHAT (capacity, vector, energy characteristics)
- b. WHERE (area of investment need)
- c. WHO (network license area)
- d. WHEN (connection and phasing timescales)
- e. WHY (needs case)

## **Not the:**

- f. HOW (Networks design and deliver the solutions)

# Specification structure

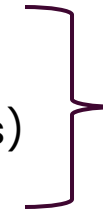


## Two-stage specification:

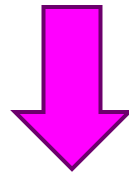
### Start of Step 4 – Outline specification

Outline specification of in-scope complex SIN with uncertainty ranges

- a. WHAT (capacity, vector)
- b. WHERE (location)
- c. WHO (network license area/s)
- d. WHEN (timescale)



Some of these will not be specific at this stage, i.e. level 2 or 3 uncertainties



**Collaboration with networks and wider stakeholders to get from Outline to Final Specification**

### End of Step 4 – Final SI Need specification

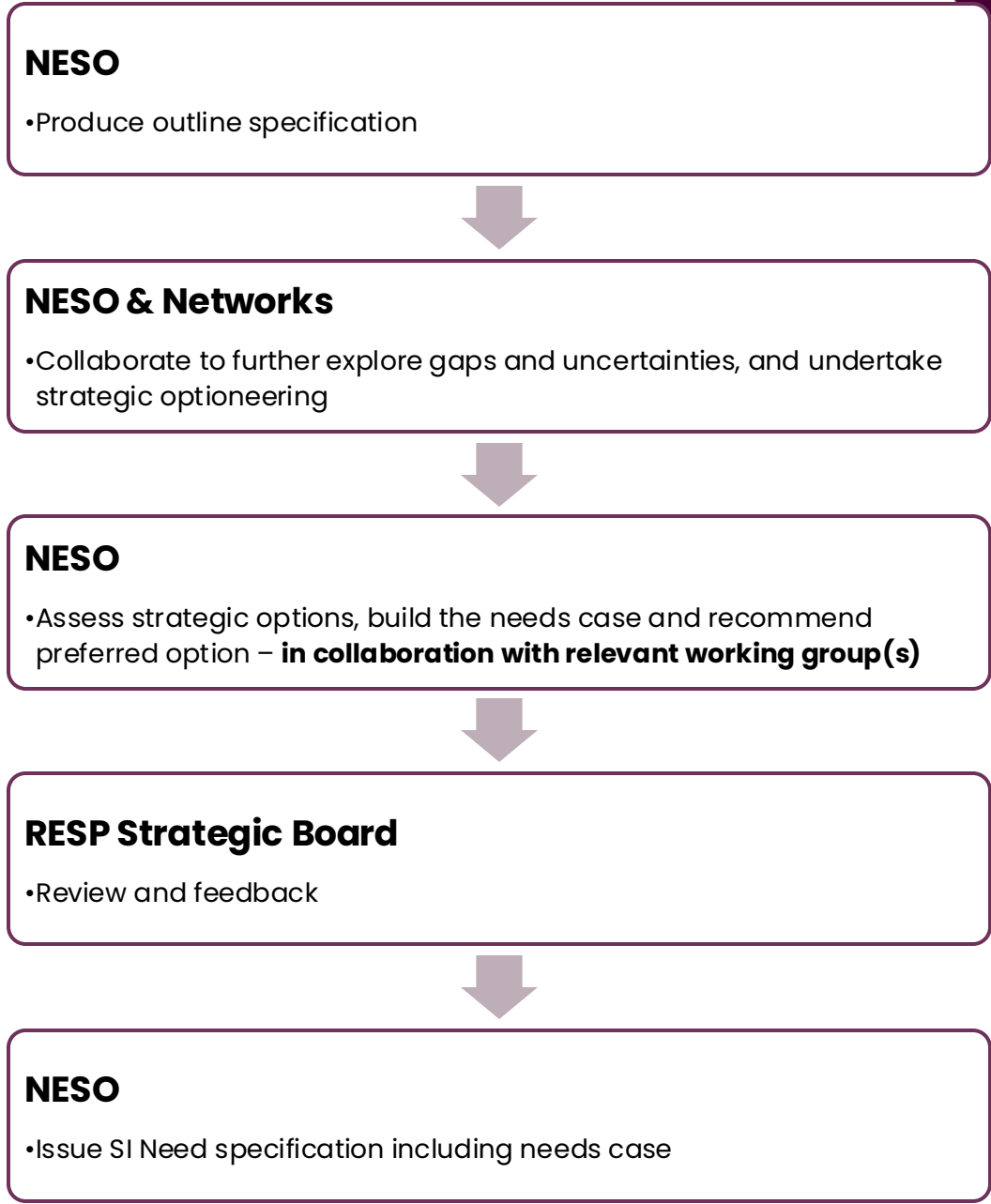
Direction setting specification to form part of RESP output

- a. WHAT (capacity, vector)
- b. WHERE (location)
- c. WHO (network license area)
- d. WHEN (timescale)
- e. WHY (needs case)



All to be specific at this stage (for prescriptive spec)

# Producing the Specification – Proposed approach



# Final Specification Content



## SPECIFICATION OF STRATEGIC INVESTMENT NEED

### Area (the 'where' and the 'who')

**Location** – *area of strategic investment need*

**Network licence area**

### Basis of investment (the 'what' and the 'when')

**Energy type** – *vector*

**Characteristics and capacity of energy need** – *scale, profile, supply/demand etc*

**Connection date**

**Phasing** – *connection and capacity phasing*

**Network level** – *primary, medium pressure etc*

### Justification of investment (the 'why')

**Needs case** – *set out in later slide*

**Categorisation** – *type of specification (set out in next slide)*

# Final SIN specification – 3 types

Specifications are likely to vary in terms of specificity for different scenarios. We expect to see three distinct types of specifications:

<b>1. Direction setting one-off specifications</b>	<b>2. Direction setting one-in-a-series of specifications</b>	<b>3. Informative outline specifications</b>
Single, one-off specification for a particular area where the complexity requires a decision based on NESO's judgement that does not need to be revisited during future RESP cycles.	The first of many for areas where the energy need is likely to stay complex and certainty increases over several RESP cycles.	For some specifications, we will be unable to set out more than an outline for certain factors due to the nature of the complexities and uncertainties.

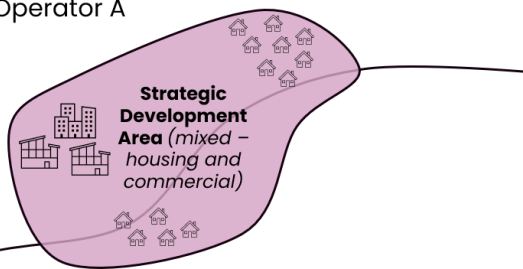
# Hypothetical examples

## 1. Direction setting one-off specifications

NESO assesses high-level options and applies independent judgement on which network, or a combination of, can deliver the optimal network solution for the Strategic Development Area.

### Development on, or near, Network Boundaries

Network Operator A

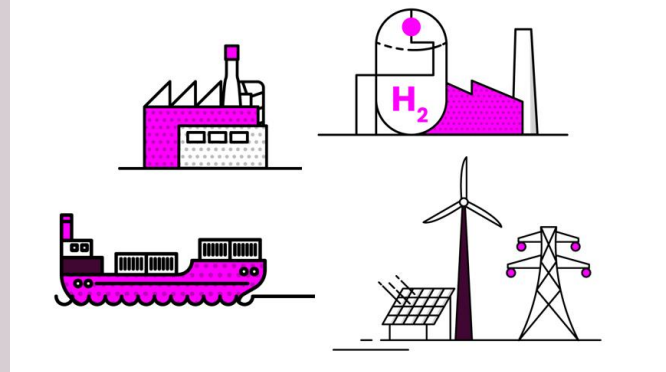


Network Operator B

## 2. Direction setting one-in-a-series of specifications

In the case of a Freeport, NESO could apply its independent judgement on the appropriate level of upstream investment for the current RESP cycle given the uncertainties associated with the future energy need.

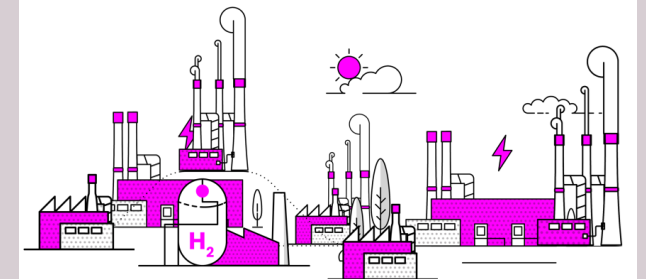
### Freeport



## 3. Informative outline specifications

NESO identifies an area that will need network investment to achieve a key priority of the nation or region. However, in some cases – the basis of investment could be dependent on policy decisions yet to be taken and therefore too uncertain to prescribe an investment need at that point in time.

### Industrial Cluster



# Needs Case proposal (the WHY)



## **1. Strategic Case for Energy Need**

### ***[why is it important?]***

- Significance to Nation/Region
- Strategic Value

## **2. Complexity**

### ***[why does it need Strategic Planner involvement?]***

- Complexity statement
- Uncertainties
- Role undertaken by NESO

## **3. Strategic Options appraisal for Network Investment**

### ***[why is this the most appropriate option?]***

- Assumptions and constraints
- The spatial context
- Overview of strategic options considered
- High-level cost benefit analysis
- Rationale behind preferred option

# Key roles and responsibilities for producing the output

Group	Key roles and responsibilities
<b>NESO RESP Team</b>	<ul style="list-style-type: none"> <li>• Maintain a robust, transparent and <b>collaborative process</b> to produce the output</li> <li>• Assess options and <b>apply independent judgement</b> to trade off decisions without commercial bias</li> <li>• <b>Enable the flow of information</b> across relevant networks and vectors to encourage whole system optimisation</li> <li>• <b>Convene relevant stakeholders</b></li> </ul>
<b>Energy networks</b>	<ul style="list-style-type: none"> <li>• <b>Collaborate with NESO to map stakeholders</b> relevant to the identified complex need and identifying key knowledge gaps and uncertainties.</li> <li>• <b>Contribute data and relevant insights</b> to support the process.</li> <li>• <b>Support stakeholder engagement</b></li> <li>• <b>Undertake high-level optioneering</b> including high-level cost analysis.</li> </ul>
<b>Local actors</b>	<ul style="list-style-type: none"> <li>• <b>Engage with the request for additional information</b> to provide deeper insights into energy needs and priorities.</li> </ul>
<b>Strategic Boards</b>	<ul style="list-style-type: none"> <li>• Review and <b>approve the areas of specified SI Needs</b> during the final RESP plan submission.</li> </ul>

# Plenary Q&A

15 mins

Jonny Sadler, Elgan Roberts, Faith Natukunda

Internal Use Only

# Breakout Workshops

30 mins

Jonny Sadler

# Breakout Room Structure

We'll cover two questions:

1. Does the updated Overview further clarify the intention of SI Need and the value-add from NESO in the process?
2. Do you agree with the updated methodology that defines the output and the approach for 'Step 4: Specifying the SI Needs'?

## Housekeeping:

- Mics on, and cameras too if you want
- Transcription will be on, but notes will not be published

# Breakout Room Guide

## Per question:

- 3 mins – Everyone writes their responses to the question in Mural
- 10 mins – Group discussion on the feedback given
- 4 minutes – To review and vote on the response they consider most important (You each have 1 vote per question)

# Car park

- Used by participants to capture – **Items outside of today's session scope**
- Points will be considered when drafting other sections of the methodology.

# Feedback & discussion

20 mins

Jonny Sadler

# Feedback & Discussion (20 mins)

Once the breakout sessions have ended:

- Voting results will be displayed from Mural
- Chair will highlight most voted points
- Open discussion on key themes

# Next steps

Jonny Sadler

# How to respond

- Please submit your responses by **11.59pm on 16 March 2026**
- Please submit your response via the **Qualtrics platform:**  
[https://nationalgrideso.fra1.qualtrics.com/jfe/form/SV\\_8pJAMkj82VNpEyi](https://nationalgrideso.fra1.qualtrics.com/jfe/form/SV_8pJAMkj82VNpEyi)
- If you are not able to submit via Qualtrics, please let us know at [box.resp@neso.energy](mailto:box.resp@neso.energy) by 9 March 2026, at the latest.
- Responses are saved as you progress through the form, so you don't have to complete all questions at once. **Please note that they are only saved when you go to the next page of the survey.**
- You will be able to download a copy of your responses as a PDF at the end.
- FAQs are published on the RESP Methodology consultation section of the NESO website
- If you have any questions, please email: [box.resp@neso.energy](mailto:box.resp@neso.energy)