

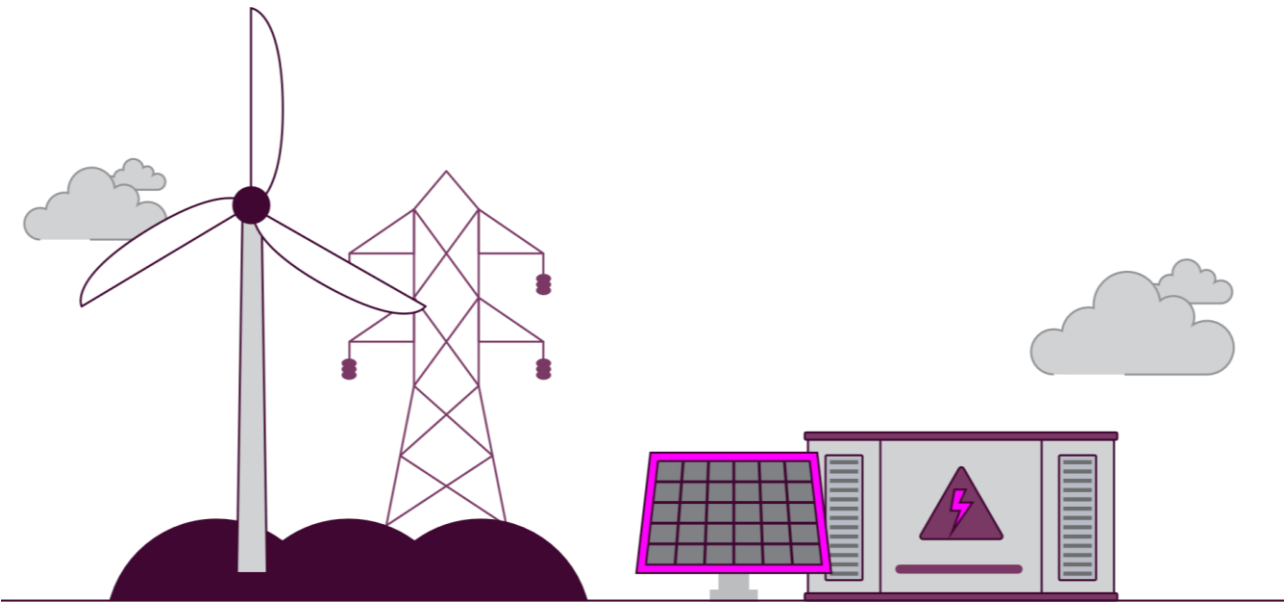
Public

Connections Methodologies Update to Remove CMP435

21 January 2026

Table of Contents

- 1. Context and Purpose 3
- 2. Preparation for the annual connections methodology review and consultation process starting in early 2026 4



1. Context and Purpose

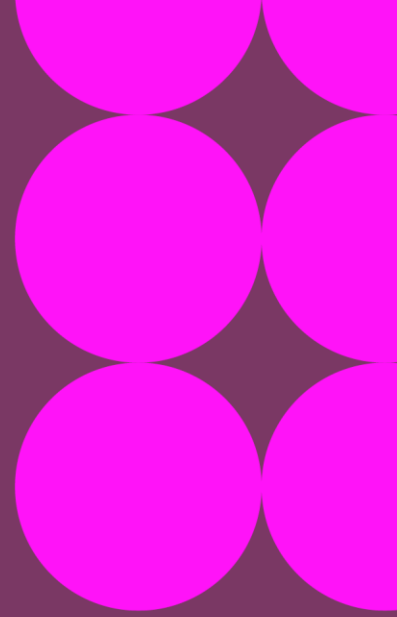
- 1.1 On 22 December 2025 we published a 'Further connections methodologies update' to support the publication of marked-up and clean Connections Network Design Methodology (CNDM) and Gate 2 Criteria Methodology (G2CM) documents to show how the improvements and clarifications in our November 2025 update have been reflected within the CNDM and G2CM. These documents can all be found on our website.
- 1.2 This short follow-up document and the accompanying further marked-up and clean G2CM and CNDM documents are to help NESO and industry prepare for the annual connections methodology review and consultation process starting soon. Further information on this is set out in Section 2 below.

2. Preparation for the annual connections methodology review and consultation process starting in early 2026

- 2.1** The connections methodologies cover both the CMP435 (i.e. the one-off Gate 2 to the Whole Queue) process, as well as the first application window under CMP434.
- 2.2** In line with the obligations in our licence, we are required to review and consult on any potential changes to the connections methodologies, at least once annually from April 2025. As such, soon we intend to:
 - 2.2.1** publish information on minor amendments we intend to make to the connections methodologies to support implementation of the first CMP434 window later in 2026¹; and
 - 2.2.2** consult on more material changes that could be made to the connections methodologies.
- 2.3** Ahead of the first CMP434 application window and ahead of the annual review and consultation referred to above, we are today publishing marked and clean versions of the connections methodologies that focus only on the unchanged arrangements for the first CMP434 application window. We are doing this in advance of 2.2.1 and 2.2.2 above in order to provide clarity to customers on what a 'CMP434 only' version of the methodologies looks like before we start our annual review and consultation soon.
- 2.4** These new versions are being provided for illustrative purposes only, and they are not 'live' methodologies.
- 2.5** In order to do this, we have removed all arrangements from these documents that only relate to CMP435. The methodology versions containing CMP435 content will however remain available and published on our website, for reference.
- 2.6** For the most part, removing CMP435 content is simply a case of deleting content which is clearly specific to CMP435. However, in places there are some nuances to the changes in CNDM that we would like to highlight, as follows.
- 2.7** Certain aspects of the CMP434 content in Section 6 (Gate 1 in CMP434) and Section 7 (Gate 2 in CMP434) cross-reference back to Section 5 (on CMP435).

¹ This will include updating out-of-date content e.g. in relation to the progress of other strategic programmes within CNDM.

- 2.8** So, when Section 5 is deleted this means that some CMP434 content in Section 6 and Section 7 becomes unclear or potentially even inoperable.
- 2.9** Therefore, where relevant content to Section 6 or Section 7 is deleted from Section 5 we have reinstated that content in new Appendices and have updated the relevant references and cross-references.
- 2.10** However, as a result of the above, there is then CMP435 specific content which needs to be deleted from the new appendices to only leave CMP434 specific content, and in some cases minor clarificatory changes and additions are required to replace some of that deleted content to ensure that the content is cohesive when read in the sole context of CMP434.
- 2.11** So that content-based changes can be differentiated from the administrative changes, we have not marked up the movement of text or changes to the numbering/formatting in relation to the above changes. We have instead only included the mark-up to the new appendix section titles and content changes within those new appendices. This is so that readers/reviewers only see the non-administrative changes to the content of what was Section 5 in making it solely related to Section 6 and Section 7. This allows a much easier review of content change.
- 2.12** Within the new appendices we have not yet updated the rebalancing and substitutions diagrams and colour schemes. We will do this in the upcoming consultation version.
- 2.13** We are also considering the most appropriate way to ensure that the elements of CMP435 which need to remain in place until the conclusion of CMP435 remain applicable to the relevant parties. As such, there is the possibility that some of the CMP435 content we have illustratively removed within these non-live versions needs to be reinstated in the versions we send for approval to Ofgem. However, we are concurrently exploring other options, as our preference is to have the CMP435 content removed from the next approved iteration.
- 2.14** Please also note that with the reduction in content, we have also taken this opportunity to rectify the intentional formatting and design issues which we presented in the marked and clean versions that we published in December 2025.
- 2.15** In the event you have any feedback on the CMP435 deletions and amendments above, we would be happy to receive it via box.connectionsreform@neso.energy.
- 2.16** As a final update, please note that in the December 2025 marked and clean versions of CNDM we published, the ** we added to Figure 9 in Section 5 was in the wrong place, and Figure 21 in Section 7 was the incorrect figure. Both of these errors have been corrected and the marked and clean version of CNDM from December 2025 have been reissued in parallel with the above today, to include the correct figures.



NESO

Faraday House
Warwick Technology Park
Gallows Hill
Warwick
CV34 6DA
United Kingdom

Registered in England and Wales
No. 11014226

[neso.energy](https://www.neso.energy)