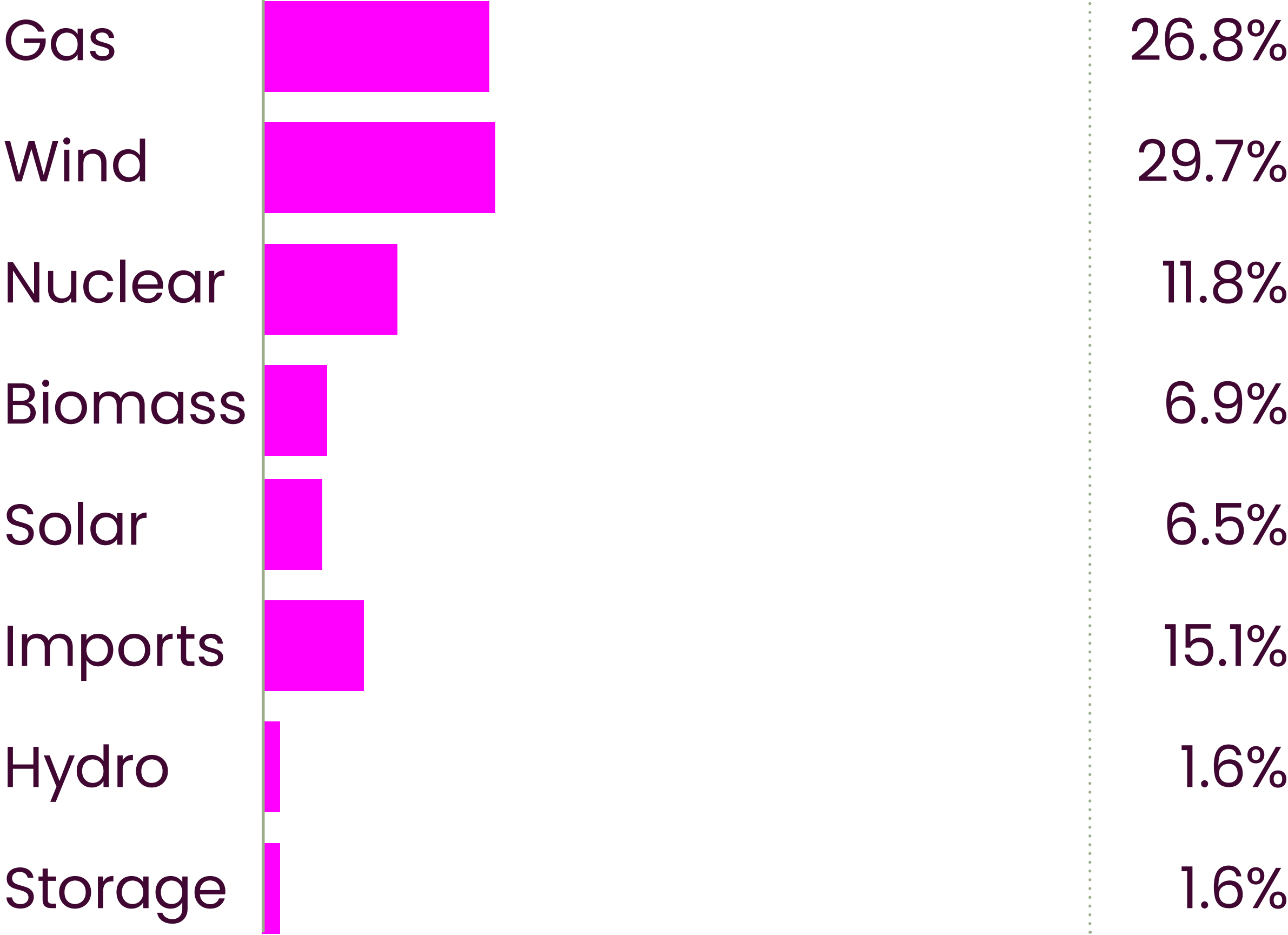
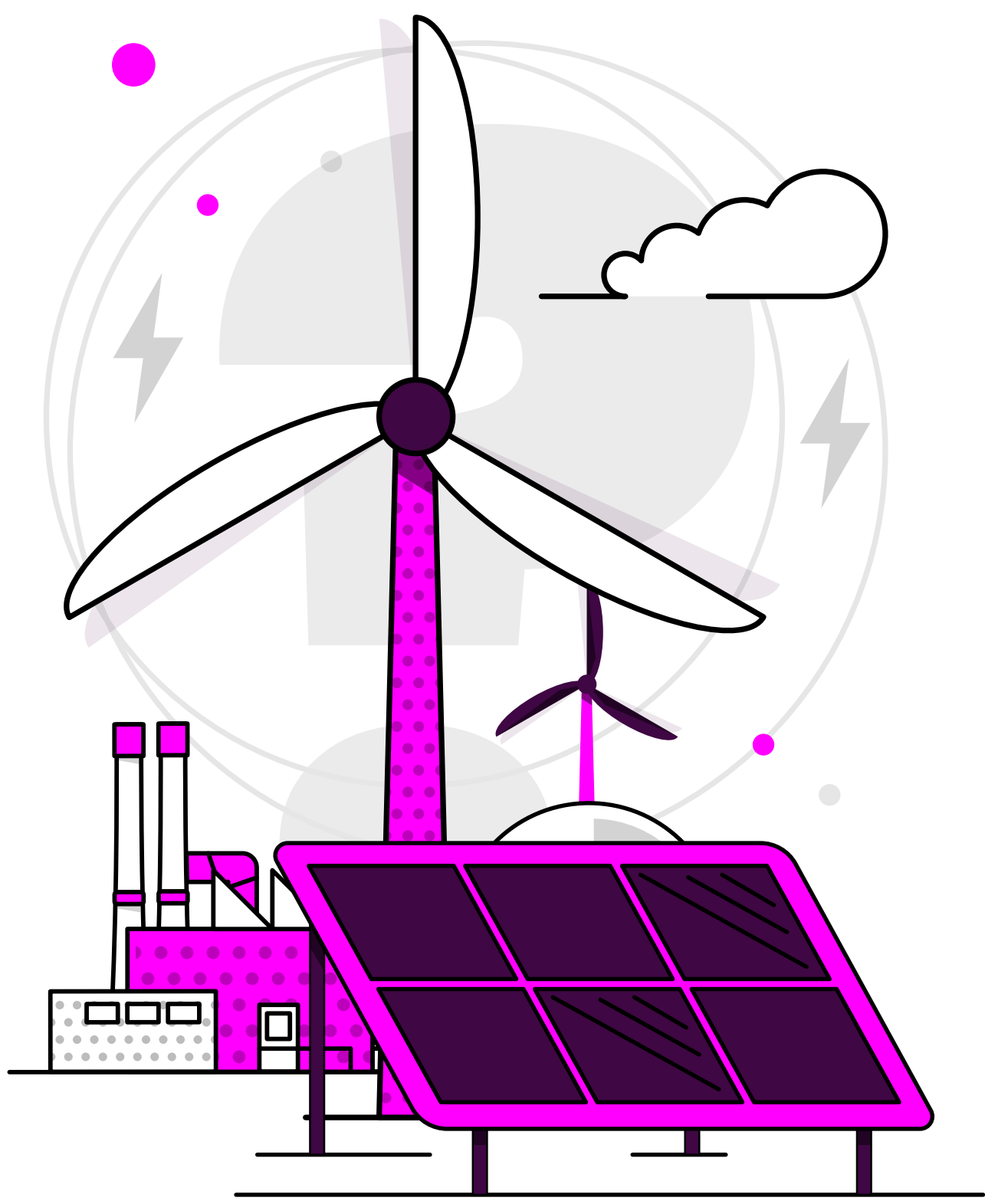




# Britain's Energy Explained: 2025 Review

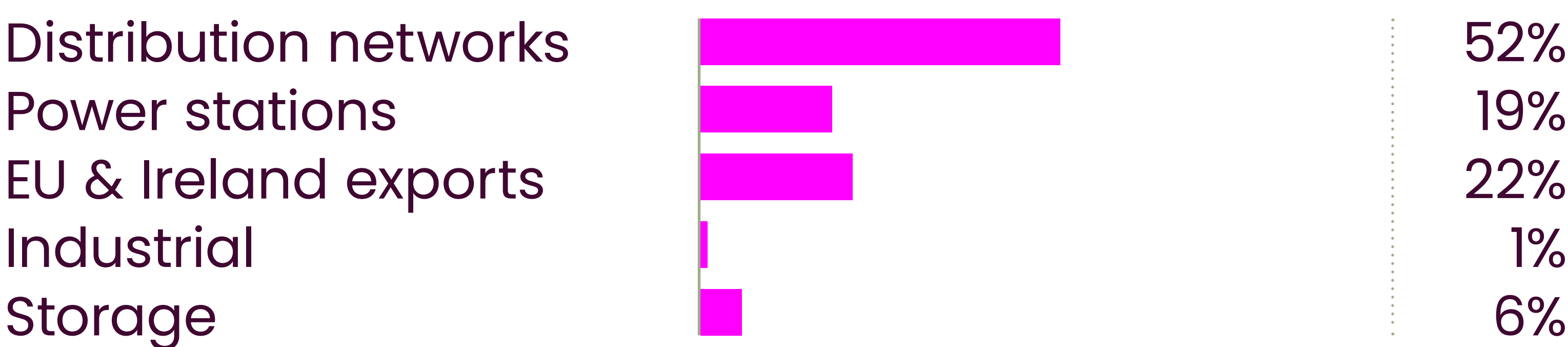
## How was our electricity generated?



## Where has our gas come from?\*

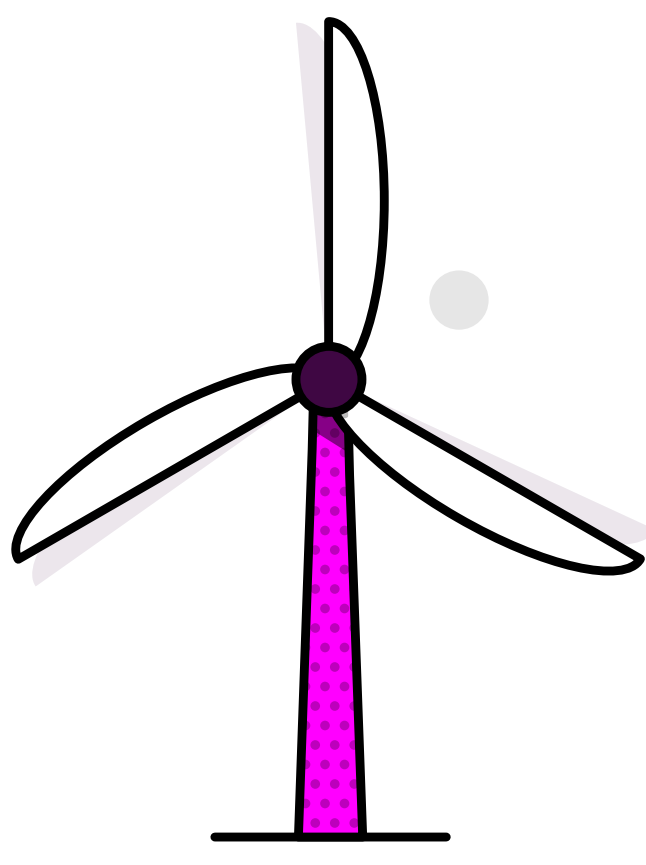


## Where is our gas used?



\*Gas data is yet to reconcile. For most up-to-date gas data, visit [data.nationalgas.com](https://data.nationalgas.com)

## Carbon intensity of electricity



### Zero carbon

Ran the electricity system at a record **97.7%** zero carbon on 1 April

Average zero carbon mix **63%**

Highest ever wind power **23.825 GW** 5 December

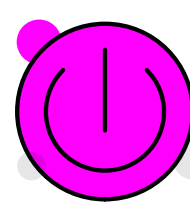
Maximum solar generation record **14.023 GW** 8 July

## How much electricity we used

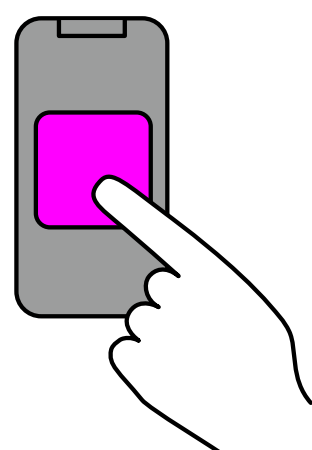
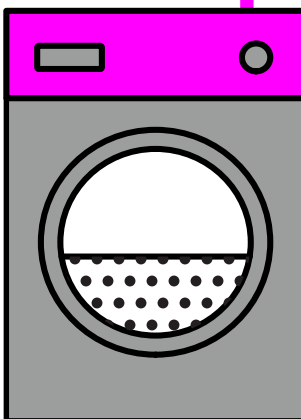
Highest demand  
**9 January, 5pm: 46 GW**

Lowest demand  
**25 May, 1:30pm: 13 GW**

Energy through network  
**288 TWh**



### Demand



### View in real-time

To view our data in real-time, please download the NESO app for Apple or Android. Or visit [carbonintensity.org.uk](https://carbonintensity.org.uk)