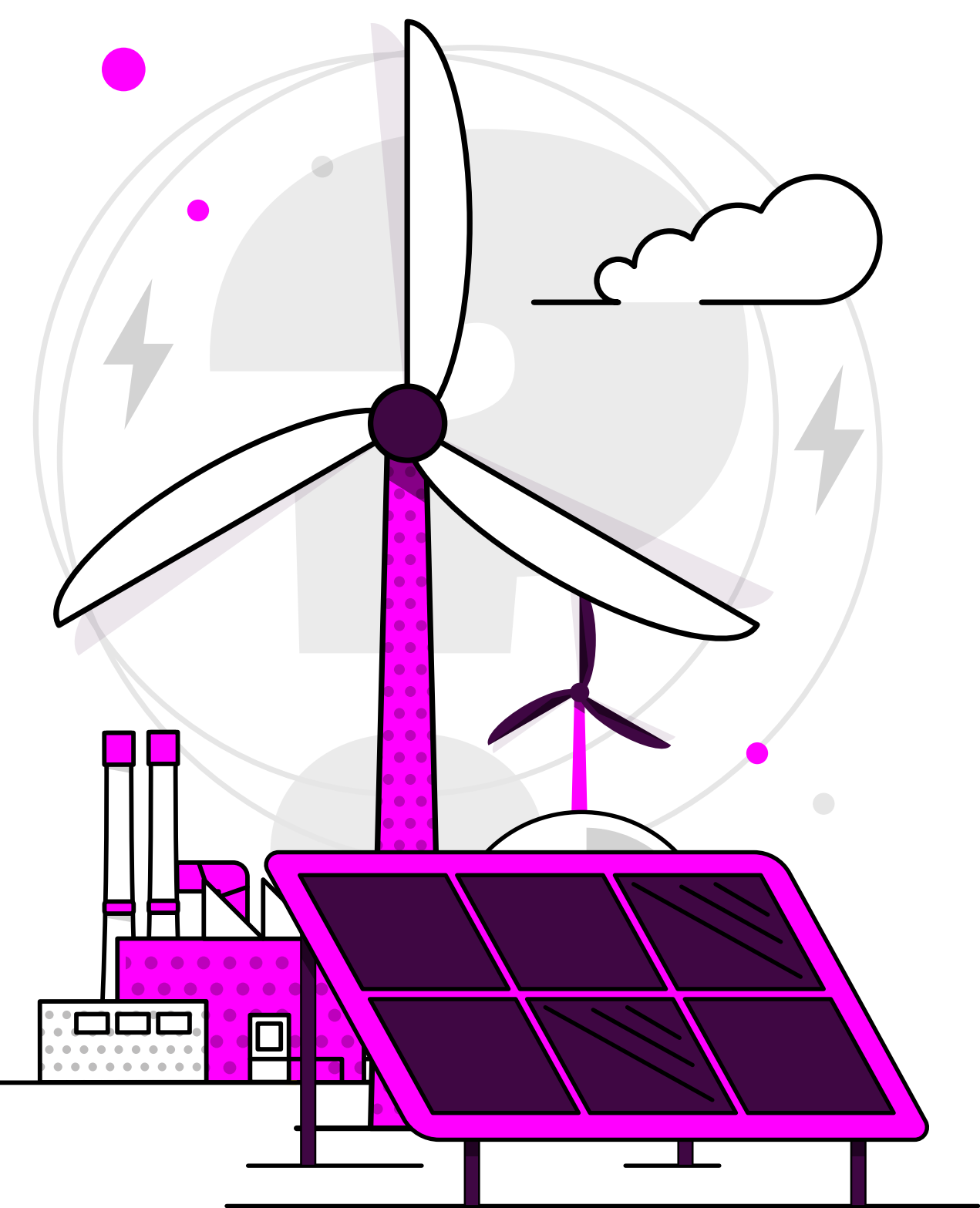


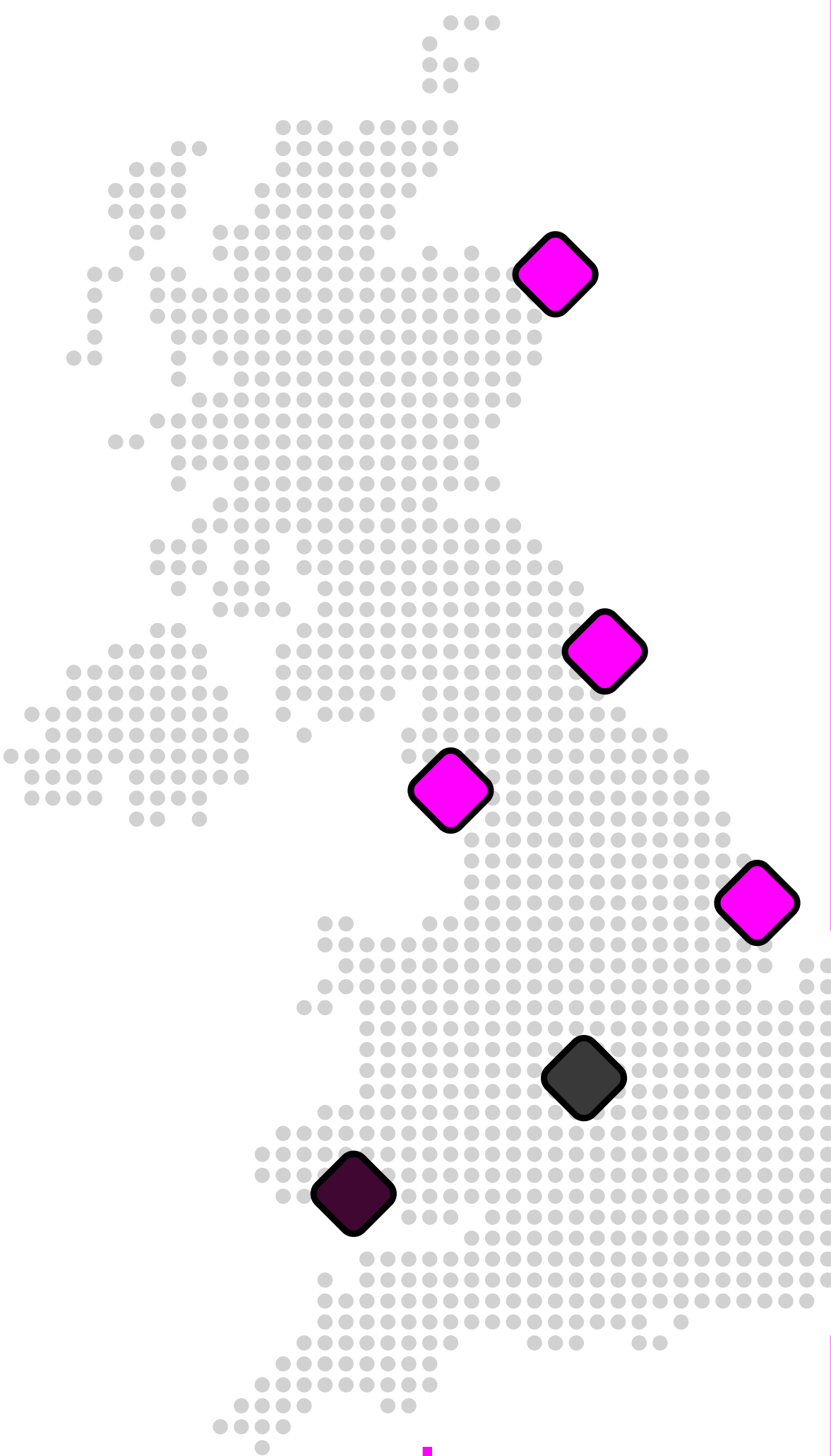
Britain's Energy Explained: December 2025

How was our electricity generated?



			change from previous month
Gas		25%	2.2% ▽
Wind		37.8%	0.7% ▲
Nuclear		10.1%	-
Biomass		6.7%	1.4% ▽
Solar		1.5%	0.7% ▽
Imports		14.8%	3.4% ▲
Hydro		2.5%	0.3% ▲
Storage		1.6%	-

Where has our gas come from?*



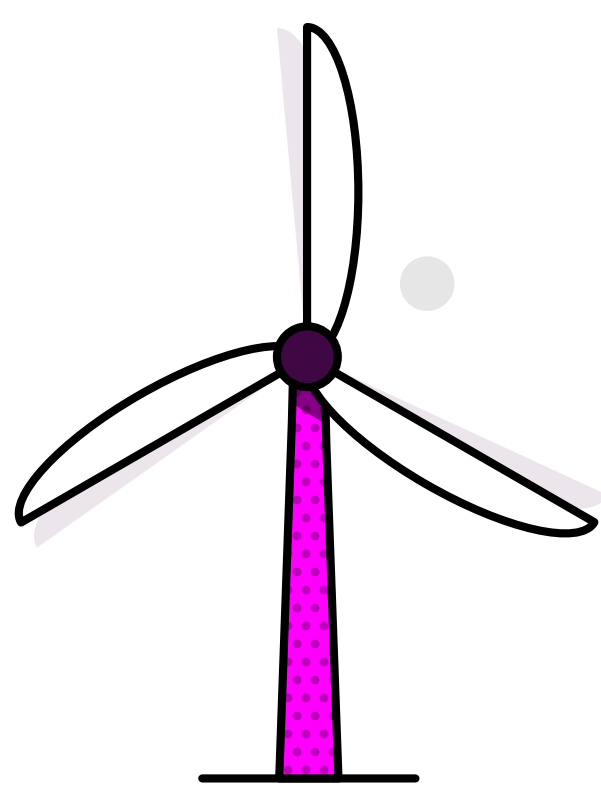
Entry Points			change from previous month
UK/Norwegian gas fields		73%	2% ▲
LNG imports		23%	1% ▽
European imports		0%	1% ▽
Storage withdrawal		4%	1% ▽

Where is our gas used?

Distribution networks		70%	7% ▲
Power stations		16%	2% ▽
EU & Ireland exports		9%	4% ▽
Industrial		1%	-
Storage		4%	1% ▽

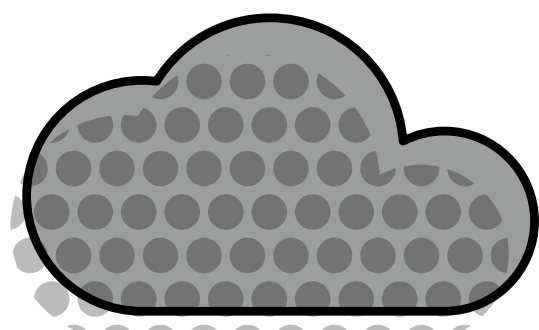
*Gas data is yet to reconcile. For most up-to-date gas data, visit data.nationalgas.com

Carbon intensity of electricity



Zero carbon

67% of electricity came from zero carbon sources
91% peak zero carbon share

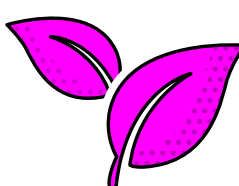


Carbon intensity

120 gCO₂/kWh average

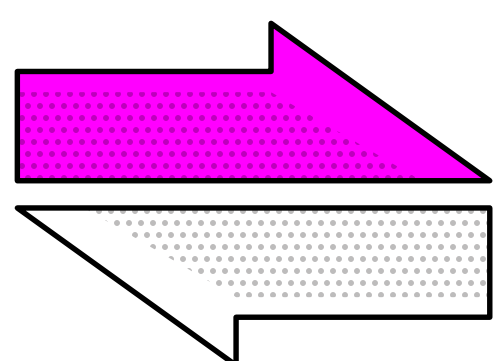


Greenest time of the month 11:30pm on 14 December



Lowest carbon intensity **38** gCO₂/kWh

How much electricity we used



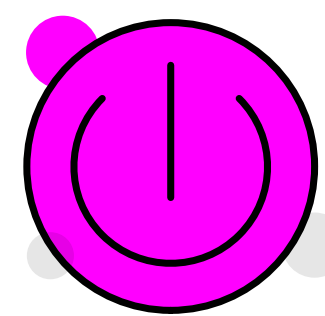
Imports & exports



Energy in
4,020 GWh

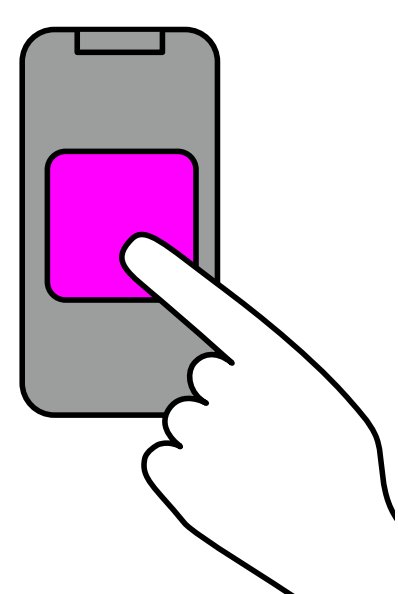
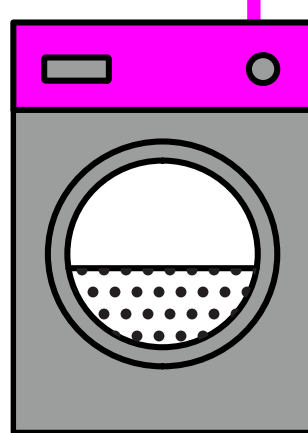


Energy out
1,116 GWh



Demand

27 TWh run through network
(that's 27 billion washing machine cycles).
Peak demand time was 5pm on 4 December.



View in real-time

To view our data in real-time, please
download the NESO app for Apple or Android.
Or visit carbonintensity.org.uk