

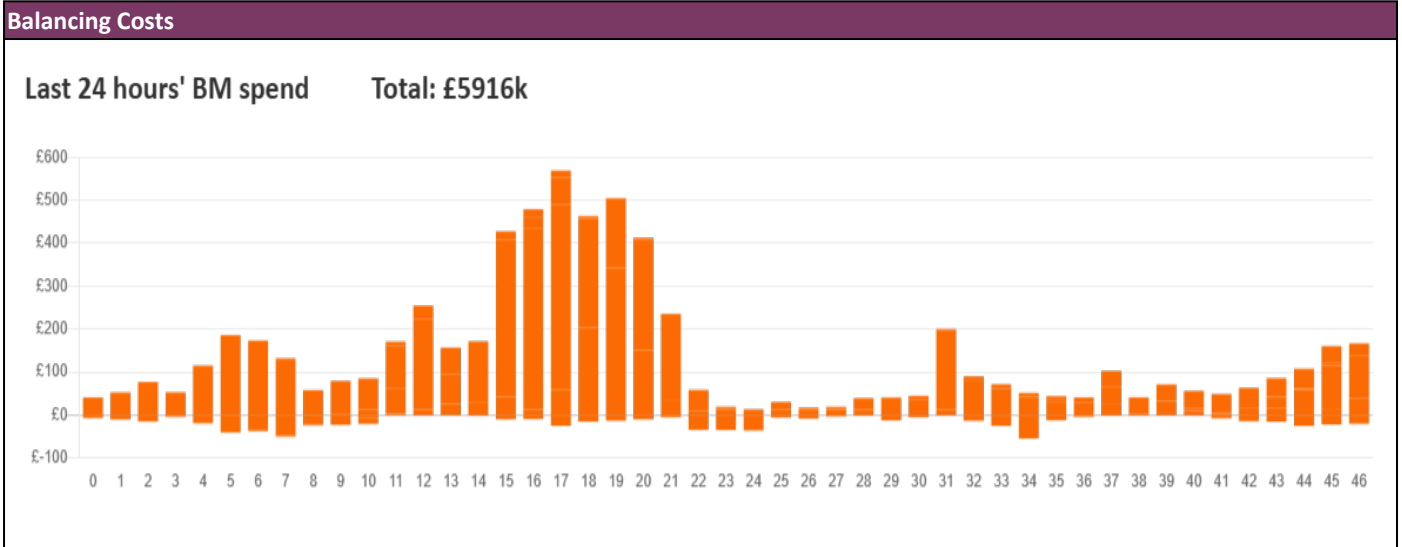
NESO
National Electricity
Transmission
System
Status report



NESO National Electricity Transmission System Status Report
Wednesday 07 January 2026

Today's High Level Risk Status Forecast for the next 24h			
General Status		Voltage	
Demand		System Inertia	
System Margins		Weather	
Generation		Transmission	
Active Constraints			
System Warning			

Today's Minimum De-Rated Margin	8,121 MW (SP 39)	
Current BMU Largest Loss Risk	Generation	1500 MW
	Demand	1050 MW



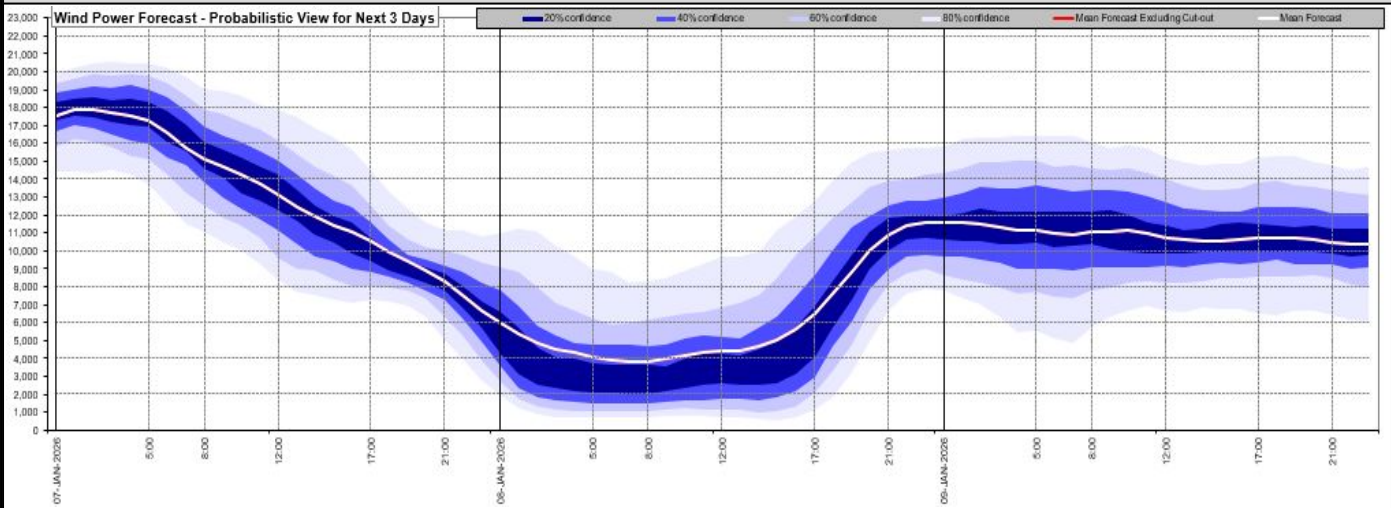
Yesterday's Market Summary

Cash Out Price (Max)	£323.20 /MWh (SP 19)
Cash Out Price (Min)	£63.97 /MWh (SP 45)
Peak Demand Yesterday	45,355 MW
Minimum Demand	28,717 MW

Interconnector Net Transfer Capacity (MWs)

Today	Import	Export	Remarks
Netherlands (BritNed)	1000	1000	Fully Available
Belgium (Nemo)	1000	1000	Fully Available
Ireland (EWIC)	500	500	Fully Available
Northern Ireland (MOYLE)	500	500	Fully Available
Norway (NSL)	1400	1400	Fully Available
France (IFA2)	1000	1000	Fully Available
Ireland (GreenLink)	500	500	Fully Available
Viking Link	1400	1400	Fully Available
France (ElecLink)	1000	1000	Fully Available
France (IFA)	1500	1500	Partially Available

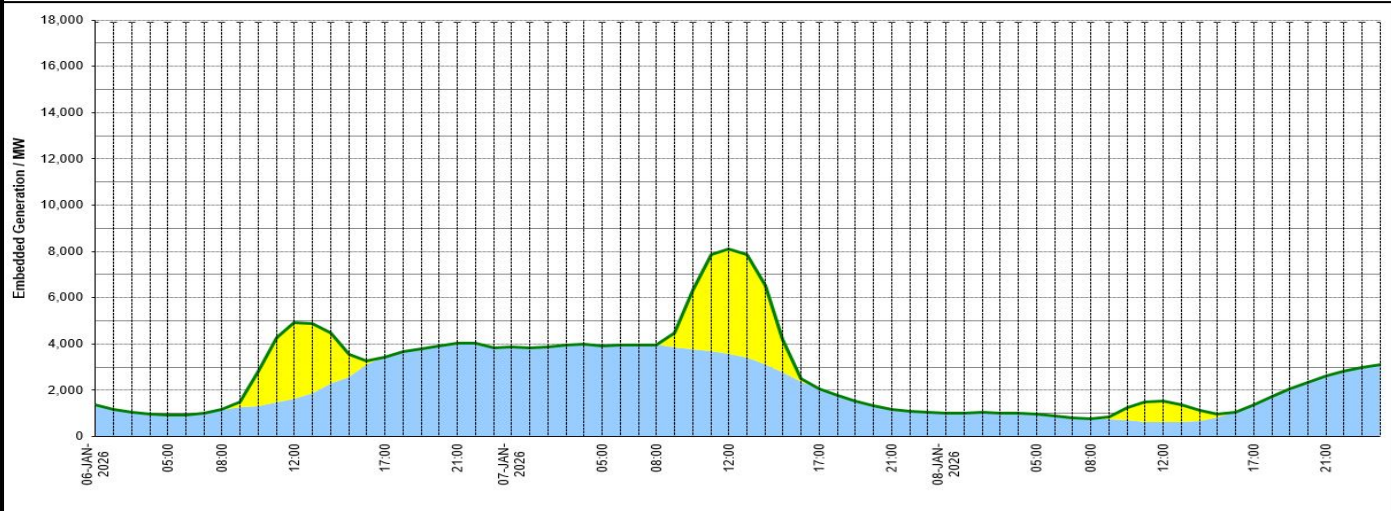
Wind Power Forecast



Expected embedded generation (MWs)

Embedded Generation Forecast

	06-JAN-2026					07-JAN-2026					08-JAN-2026						
	05:00	08:00	12:00	17:00	21:00	00:00	05:00	08:00	12:00	17:00	21:00	00:00	05:00	08:00	12:00	17:00	21:00
Solar (MW)	0	0	3249	0	0	0	0	0	4533	0	0	0	0	0	911	0	0
Wind (MW)	933	1167	1650	3444	4031	3851	3927	3953	3565	2071	1166	1015	951	766	606	1370	2620
STOR (MW)	0	0	0	0	0	0	0	0	0	0	0	0	0	0	0	0	0
Total (MW)	933	1167	4899	3444	4031	3851	3927	3953	8098	2071	1166	1015	951	766	1517	1370	2620



Weather	Source	Commentary
Latest forecast (Summary)	Met Office SEPA Natural Resources Wales	Today: An icy start for many. Plenty of dry weather around though with some sunshine. Sleet and snow showers across northern and northeastern Scotland. Thicker cloud with rain arriving across Northern Ireland, southwest Wales and southwest England later. A cold wind. Tonight: Wintry showers easing in the northeast. Widely frosty in the north and east with freezing fog patches. Meanwhile, rain in the west edging slowly east, with some snow in north.
General Weather Concerns e.g. wind, rain, snow, flooding, GB Weather Warnings	Met Office Weather Warning England Flood Warning SEPA Natural Resources Wales	UK Weather Warnings Yellow warning of ice Yellow - Possible Areas affected: Northern Ireland Northern Ireland Active Warning ACTIVE Started: 18:00 GMT Tuesday 6 January 18:00 (GMT) Tue 6 Jan Ends: 11:00 GMT Wednesday 7 January 11:00 (GMT) Wed 7 Jan Clearing skies and scattered wintry showers bringing icy patches and some disruption - Some injuries from slips and falls on icy surfaces - Icy patches on some untreated roads, pavements and cycle paths

Weather	Source	Commentary
		<p>Issued:09:39 GMT Tuesday 6 January09:39 (GMT) Tue 6 Jan Yellow warning of ice Yellow - Possible</p> <p>Areas affected:Central, Tayside & Fife, East Midlands, East of England, Highlands & Eilean Siar, London & South East England, North East England, North West England, SW Scotland, Lothian Borders, South West England, Strathclyde, Wales, West Midlands, Yorkshire & HumberCentral, Tayside & Fife East Midlands East of England Highlands & Eilean Siar London & South East England North East England North West England SW Scotland, Lothian Borders South West England Strathclyde Wales West Midlands Yorkshire & Humber Active WarningACTIVE Started:19:31 GMT Tuesday 6 January19:31 (GMT) Tue 6 Jan Ends:10:00 GMT Wednesday 7 January10:00 (GMT) Wed 7 Jan Icy patches overnight Tuesday into Wednesday morning could lead to some disruption.</p> <ul style="list-style-type: none"> - Some injuries from slips and falls on icy surfaces - Probably some icy patches on some untreated roads, pavements and cycle paths <p>Issued:09:59 GMT Tuesday 6 January09:59 (GMT) Tue 6 Jan Yellow warning of snow and ice Yellow - Possible</p> <p>Areas affected:Central, Tayside & Fife, Grampian, Highlands & Eilean Siar, Orkney & ShetlandCentral, Tayside & Fife Grampian Highlands & Eilean Siar Orkney & Shetland Active WarningACTIVE Started:00:00 GMT Wednesday 7 January00:00 (GMT) Wed 7 Jan Ends:23:59 GMT Wednesday 7 January23:59 (GMT) Wed 7 Jan Snow and ice is likely to bring further disruption on Wednesday.</p> <ul style="list-style-type: none"> - Possible travel delays on roads stranding some vehicles and passengers - Possible delays or cancellations to rail and air travel - Some rural communities could become cut off - Power cuts may occur and other services, such as mobile phone coverage, may be affected - A chance of injuries from slips and falls on icy surfaces - Untreated pavements and cycle paths might be impassable <p>Issued:09:58 GMT Tuesday 6 January09:58 (GMT) Tue 6 Jan Yellow warning of wind Yellow - Possible</p> <p>Areas affected:South West EnglandSouth West England Starts:15:00 GMT Thursday 8 January15:00 (GMT) Thu 8 Jan Ends:23:59 GMT Thursday 8 January23:59 (GMT) Thu 8 Jan Strong winds associated with Storm Goretta may lead to some disruption on Thursday.</p> <ul style="list-style-type: none"> - There is a slight chance of some damage to buildings, such as tiles blown from roofs - There is a small chance of longer journey times or cancellations as road, rail, air and ferry services are affected - There is a small chance that some roads and bridges could close - There is a slight chance that power cuts may occur, with the potential to affect other services, such as mobile phone coverage - There is a small chance that injuries and danger to life could occur from large waves and beach material being thrown onto sea fronts, coastal roads and properties - There is a small chance of injuries and danger to life from flying debris <p>Issued:11:14 GMT Tuesday 6 January11:14 (GMT) Tue 6 Jan Yellow warning of snow Yellow - Possible</p> <p>Areas affected:East Midlands, East of England, London & South East England, North West England, South West England, Wales, West Midlands, Yorkshire & HumberEast Midlands East of England London & South East England North West England South West England Wales </p>

Weather	Source	Commentary
		<p>West Midlands Yorkshire & Humber</p> <p>Starts:18:00 GMT Thursday 8 January18:00 (GMT) Thu 8 Jan</p> <p>Ends:12:00 GMT Friday 9 January12:00 (GMT) Fri 9 Jan</p> <p>Storm Gorette likely to bring heavy snow leading to disruption and difficult travelling conditions.</p> <ul style="list-style-type: none"> - Possible travel delays on roads stranding some vehicles and passengers - Possible delays or cancellations to rail and air travel - Some rural communities could become cut off - Power cuts may occur and other services, such as mobile phone coverage, may be affected <p>Issued:11:14 GMT Tuesday 6 January11:14 (GMT) Tue 6 Jan</p> <p>Flood Warnings</p> <p>1 flood warnings and 4 flood alerts issued for England.</p> <p>0 flood warning and 0 flood alerts issued for Scotland</p> <p>0 flood warning and 0 flood alert issued for Wales</p>

Contains public sector information licensed under the Open Government Licence v1.0

Further Information	
BM Reports	https://www.elexon.co.uk/data/kinnect-insights-solution/
System Balancing Reports	https://www.neso.energy/industry-information/industry-data-and-reports/system-balancing-reports
Forecast Volumes and Costs	https://www.neso.energy/industry-information/industry-data-and-reports/forecast-volumes-and-costs