

Date:

Saturday 06 Dec 2025

BSUoS Final Tariff: £15.69/MWh

Total Outturn: £6.35m

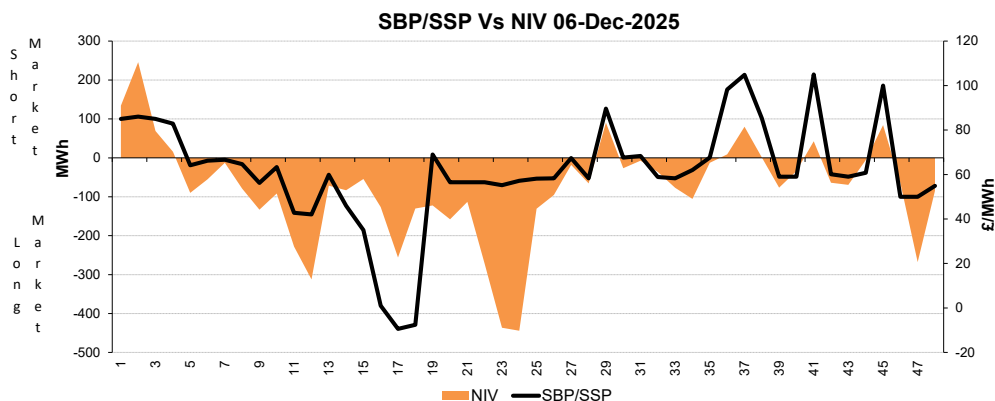
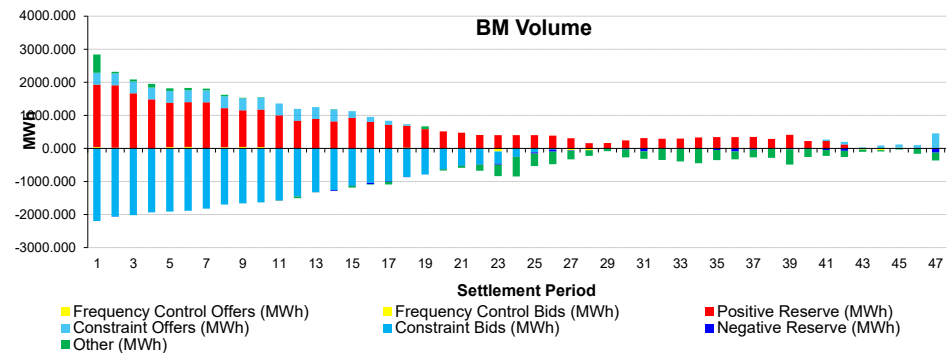
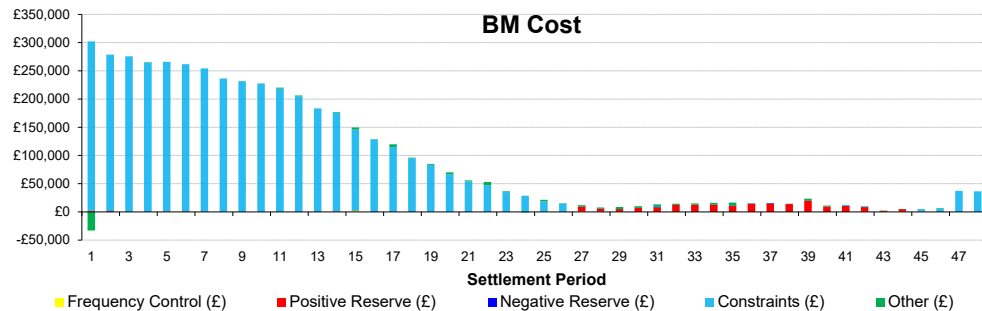
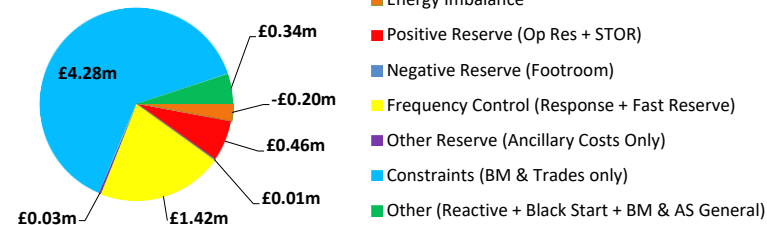
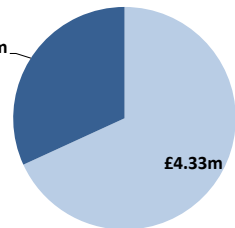
Daily Balancing Costs



BM Cost (Indicative)

AS Cost (Estimate)

£2.02m



Commentary

The market alternated between long and short throughout the day. No trades were taken for Margin or Downward Regulation. BM Actions were required to manage thermal constraints in northern England and Scotland in the morning through to midday. Trades and BM Actions supported Voltage Control.

Public