

Regional Energy System Planning (RESP) Methodology Consultation – Technical Coordination and Network Planning Assurance

3 December 2025

- Faith Natukunda – RESP Senior Manager: Technical Delivery
- James Lamyman – RESP Technical Lead
- Adam Longfield – RESP Technical Lead
- Katie Harrison – RESP Methodology Projects Lead
- Jonny Sadler – RESP Engagement & Communications Manager

Agenda

1. Welcome & Introduction – Jonny Sadler
2. Methodology Consultation – Katie Harrison
3. Technical Coordination – Faith Natukunda
– Poll Survey
4. Network Planning Assurance – Adam Longfield & James Lamyman
– Poll Survey
5. Q&A – All
6. Next Steps & How to get involved – Jonny Sadler

Methodology Consultation Document

<https://www.neso.energy/document/372156/download>



2. Methodology Consultation

Katie Harrison
RESP Methodology Projects Lead

Five components of a RESP

The
What...

The Regional Energy Strategic Plan

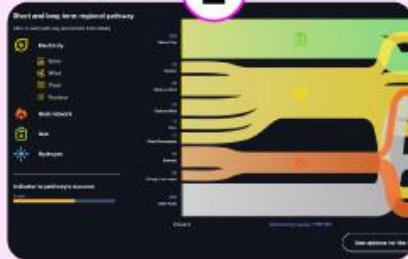
Nations and Regions Context

1



Pathways

2



Consistent Planning Assumptions

3



Spatial Context

4

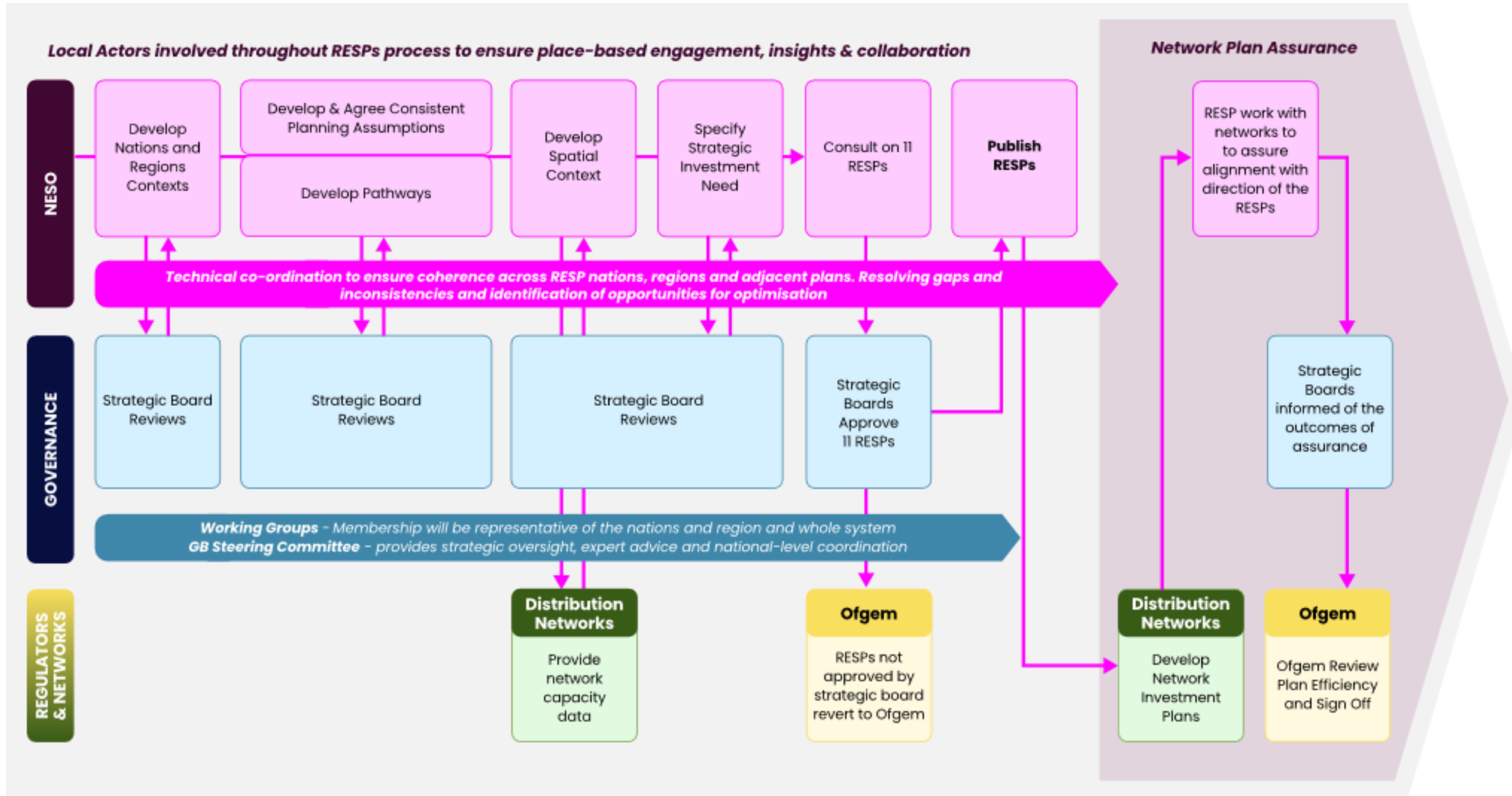


Specification of Strategic Investment Needs

5



End-to-end Process



3. Technical Coordination

Faith Natukunda

RESP Senior Manager: Technical Delivery

Technical Coordination

A key function underpin all phases of RESP development to support delivery of technically sound and optimal strategic plans and allow early identification and resolution of gaps, inconsistencies and opportunities for optimisation.



**Top-down-bottom-up
coherence**

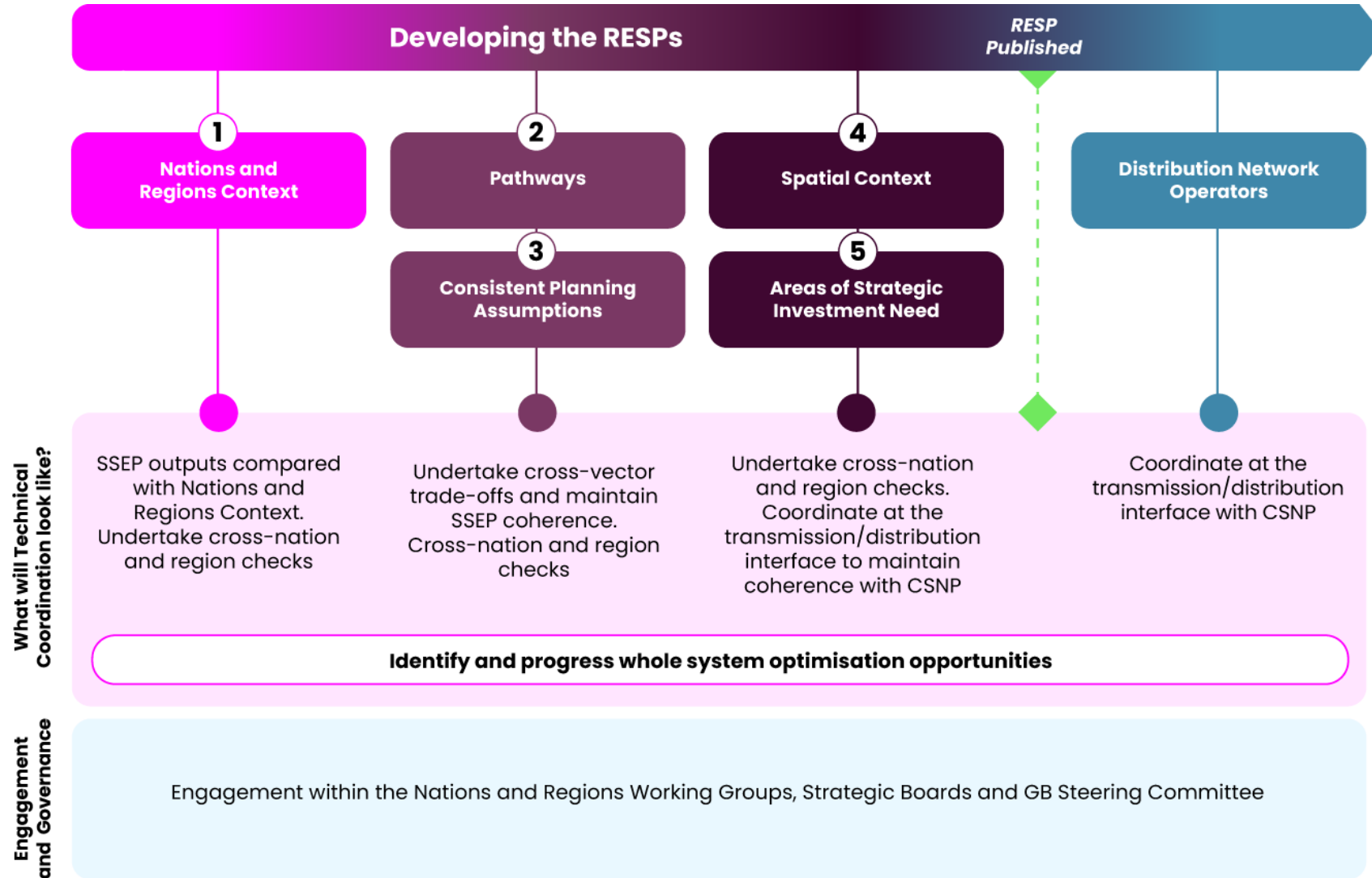


**Cross nation and region
consistency**



**Cross energy type
optimisation**

Technical Coordination



Public

Poll Survey

Technical Coordination

4. Network Planning Assurance

Adam Longfield
RESP Technical Lead

James Lamyman
RESP Technical Lead

The Ofgem Request

Ofgem want to know that networks are planning to meet future capacity requirements in an efficient way, using a whole system approach.

Ofgem expectations in **Draft RESP Guidance** (16/10/25):

- Section 5.1: NESO must conduct a targeted review of distribution networks' strategic investment plans to assure alignment with the direction of the RESP or RESPs which overlap their licence areas.
- Section 5.2: Ofgem will trigger the timing of the review, at the appropriate interval following the publication of the RESPs. The purpose of this review is to ensure whole system coherence and optimisation of the RESP is maintained through the development of single-vector network plans. The scope of the review should be limited to that necessary for this purpose.
- Section 5.3: In the RESP Methodology, NESO must articulate its approach to assuring network investment plan alignment to the direction of the RESP, when required by Ofgem.

Network Planning Assurance

Stages:



1 Align. *Ofgem* will require *Network* companies to align their network load related investment plans to the direction set by RESP. Networks must prepare an investment plan which meets the capacity needs resulting from the RESP.

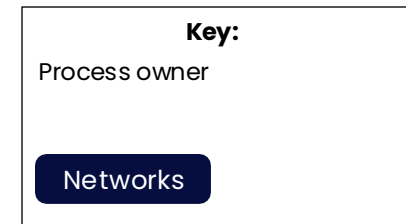
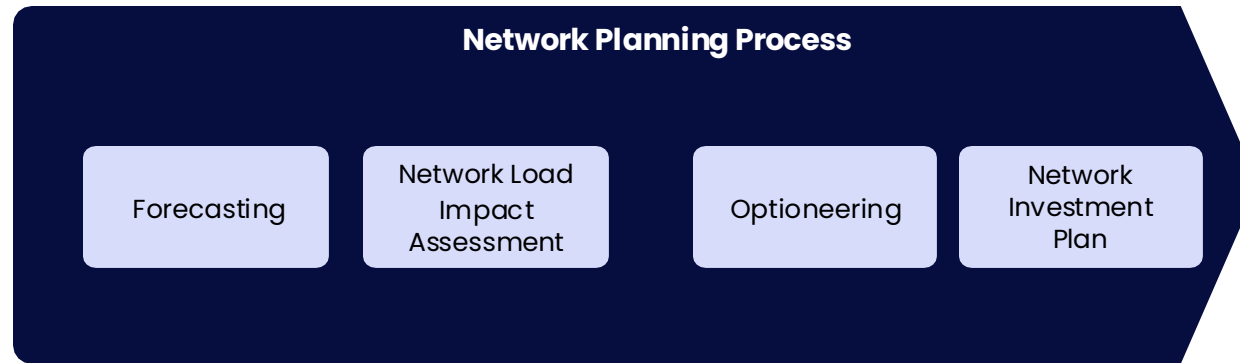


2 Resolve. Where gaps or inconsistencies are identified, *NESO* should work with the relevant *Network* companies and local actors to resolve these.

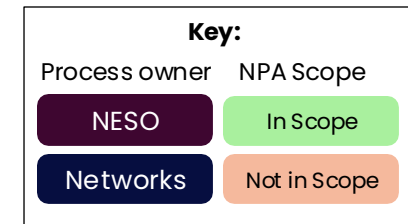
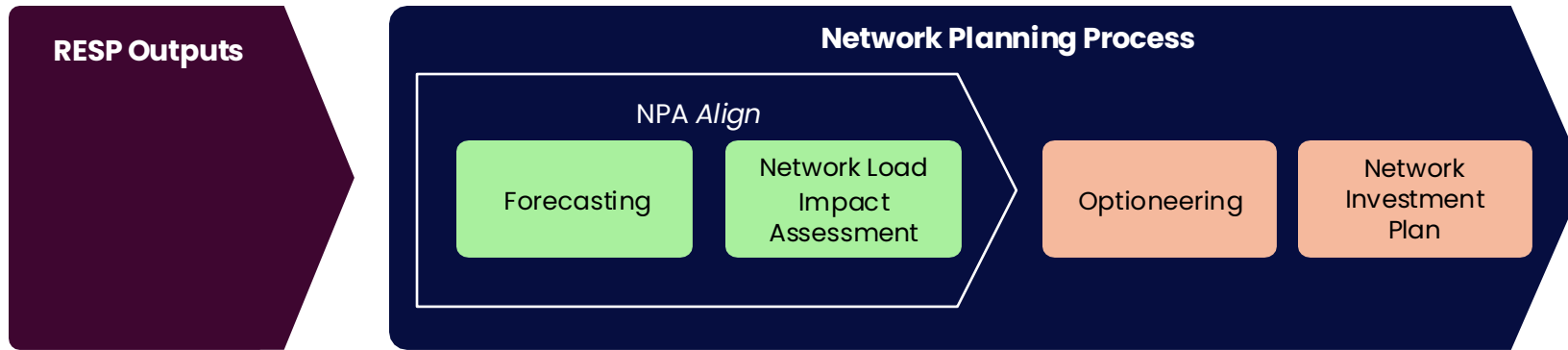


3 Review. *NESO* will conduct targeted reviews of network load related investment plans to assure they are aligned with the direction of the RESP.

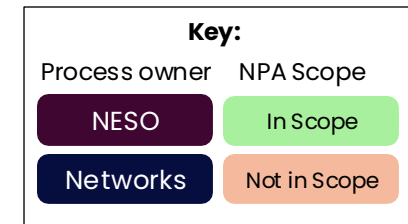
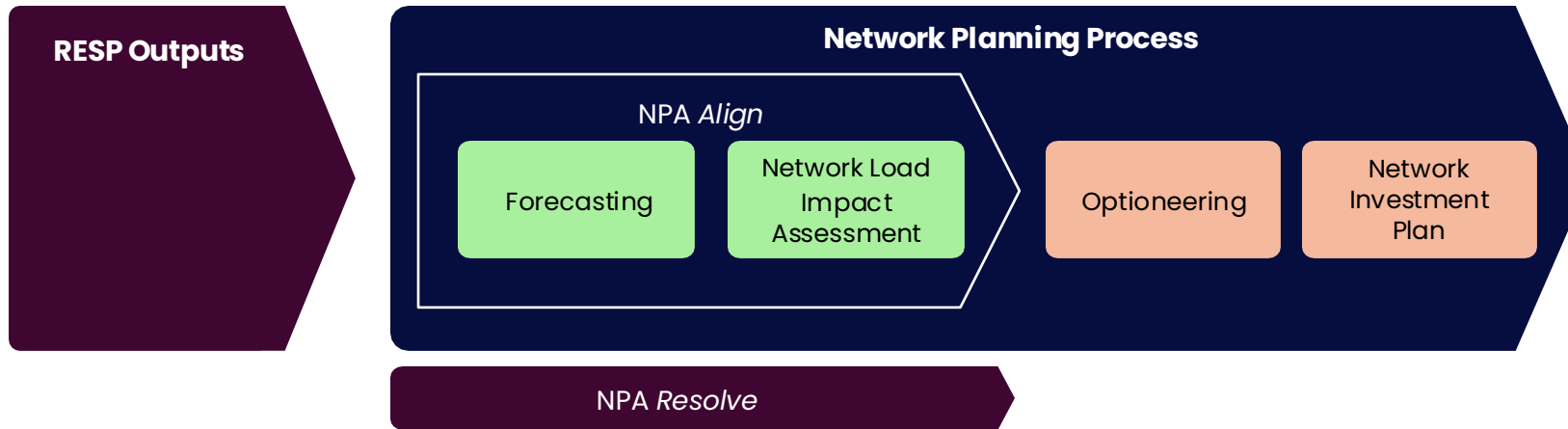
Network Planning Assurance



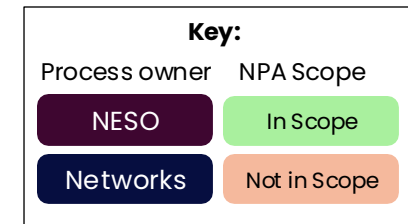
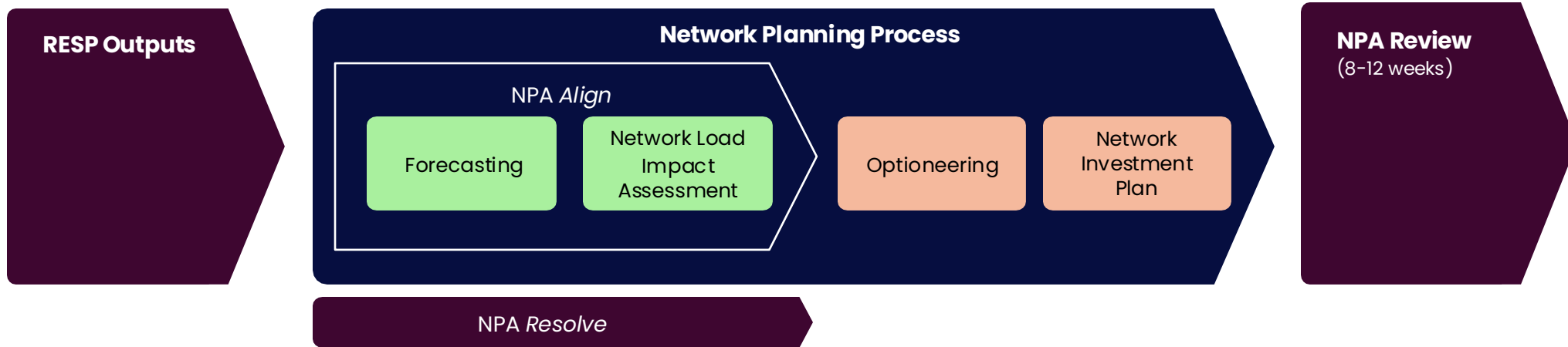
Network Planning Assurance



Network Planning Assurance



Network Planning Assurance



Public

Poll Survey

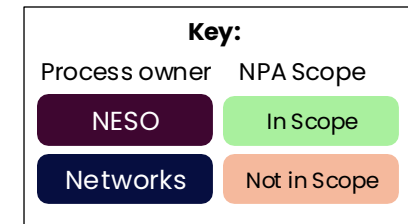
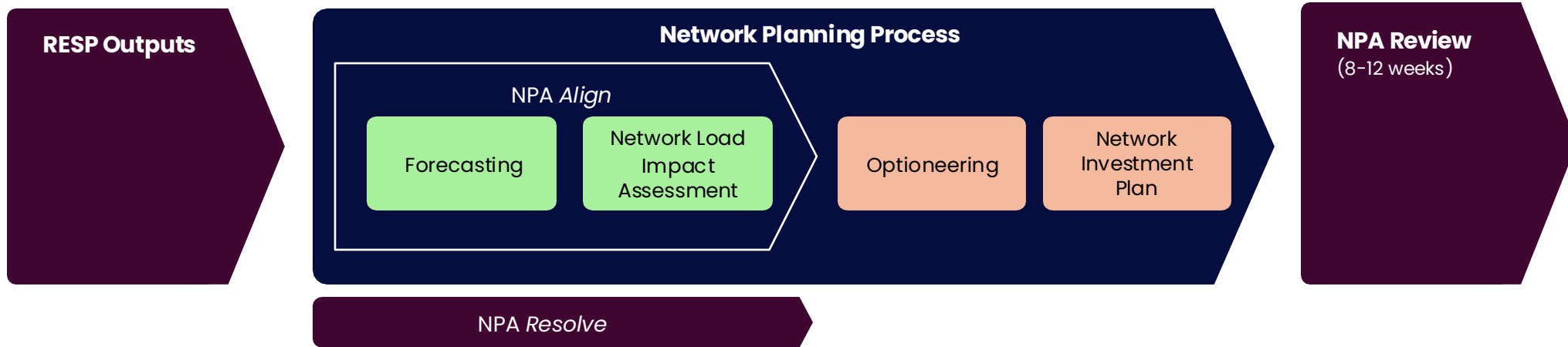
Network Planning
Assurance (NPA)

Network Planning Assurance for Electricity Distribution Network Plans

James Lamyman

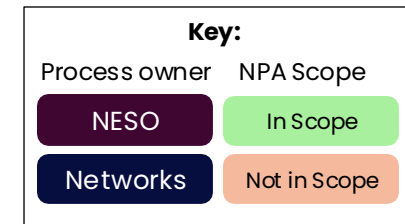
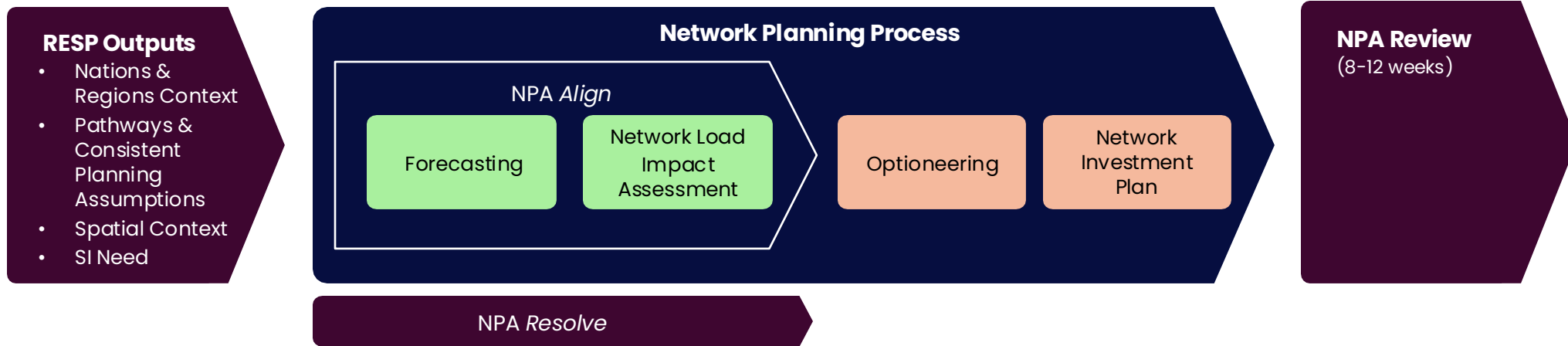
Network Planning Assurance

Electricity Distribution Network Plans



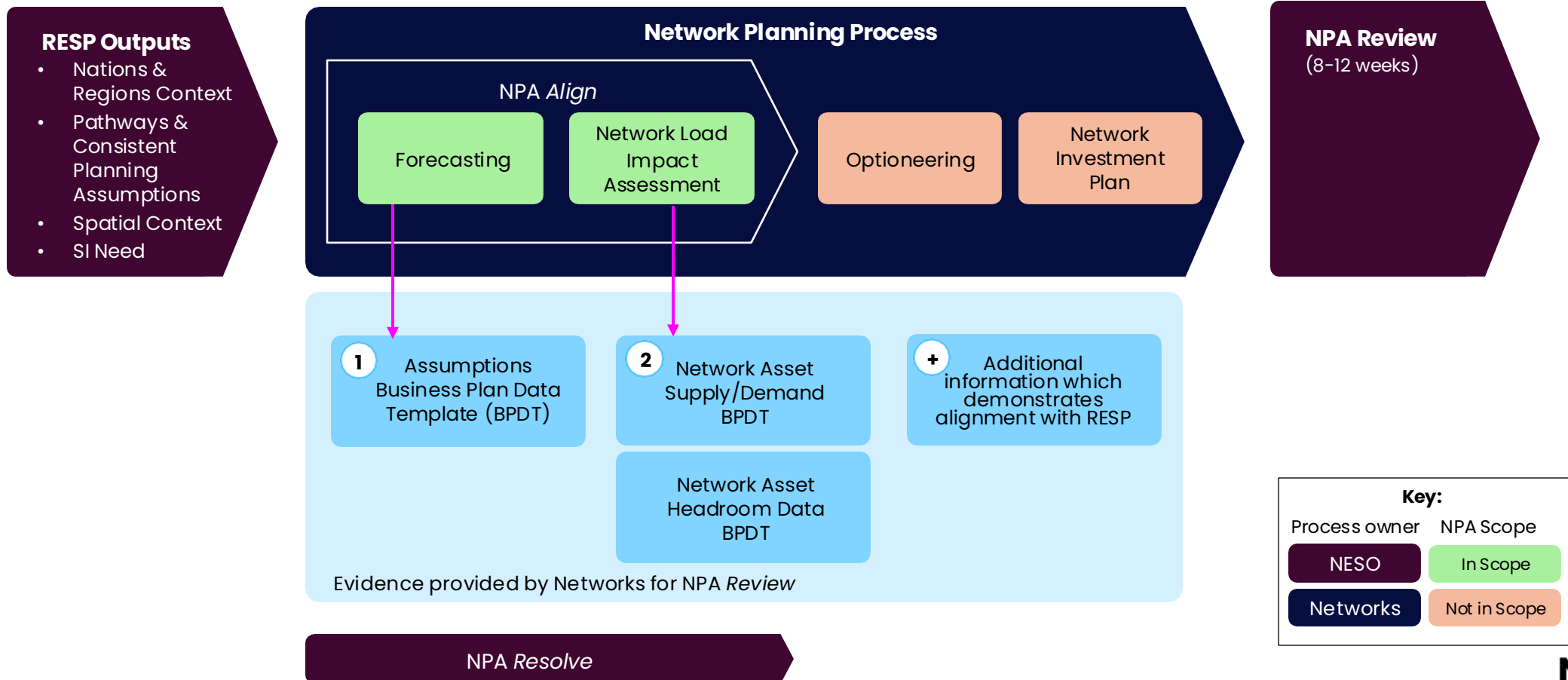
Network Planning Assurance

Electricity Distribution Network Plans



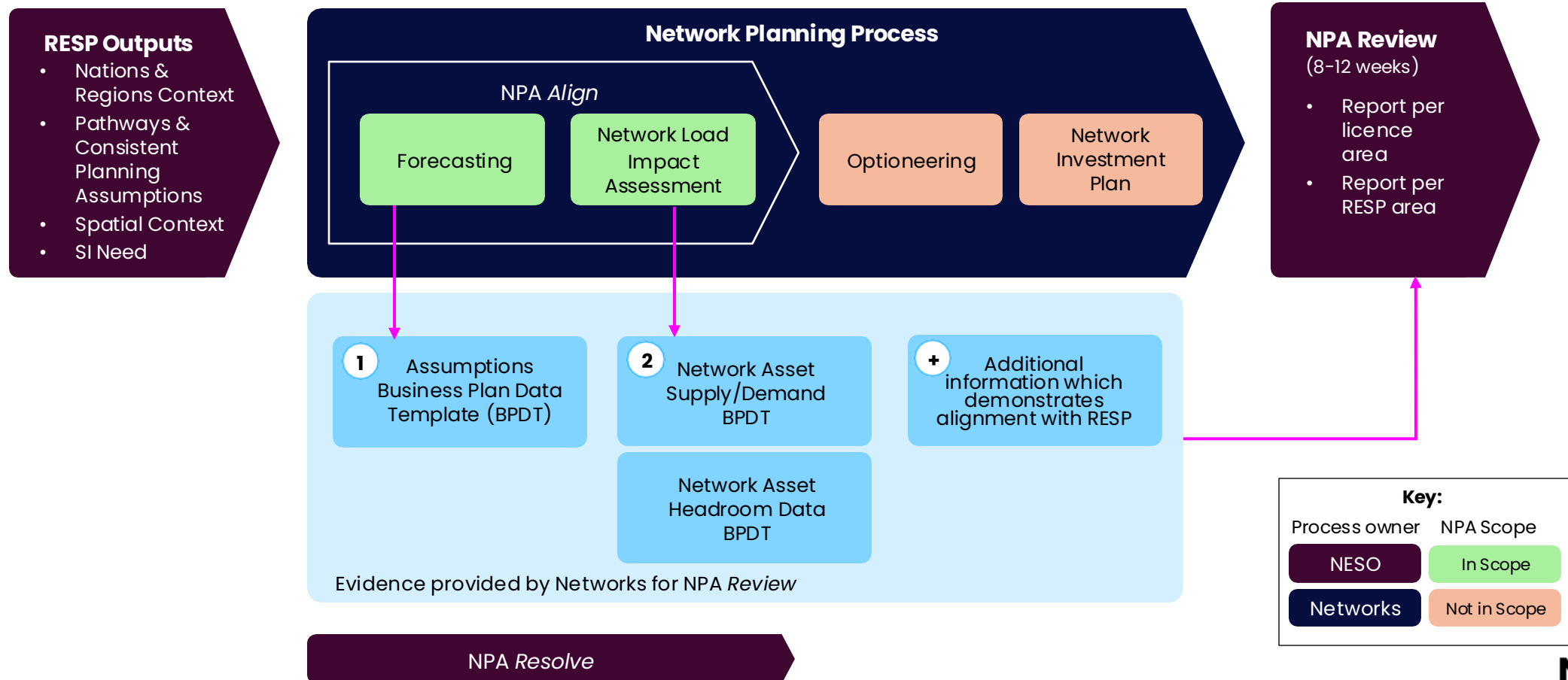
Network Planning Assurance

Electricity Distribution Network Plans



Network Planning Assurance

Electricity Distribution Network Plans



Network Planning Assurance

Electricity Distribution Network Plans

NPA *Review* (8-12 weeks)

1. Check DNO forecasting assumptions align with RESP outputs.
2. Compare DNO network peak loads with RESP indicative peak loads, down to primary substation level.
3. Review DNO asset headroom reports to identify when extra peak load capacity is required and ensure an intervention is planned to meet the need.
4. NESO will report details of any unresolved misalignments to Ofgem.

Network Planning Assurance for Gas Distribution Network Plans

Adam Longfield

Network Planning Assurance

Gas Distribution Network (GDN) Plans

Considerations:

- Significantly lower levels of load-related expenditure compared to electricity networks
- '1 in 20' licence obligation to ensure resilience of the network
- Gas demand reductions are broadly uncoupled from the size of the gas network

Potential Assurance Checks (high-level):

- Review load-related investments on a case-by-case basis (e.g. biomethane)
- Align key assumptions used across all GDNs
- Data to inform GDNs about potential trends (e.g. heat pump deployment)

Network Planning Assurance

Gas Distribution Network (GDN) Plans

Further Work:

- A bespoke assurance process for gas distribution network plans is required, which reflects their licence obligations and is proportionate to the level of load-related investment.
- Engagement with GDNs and Ofgem to understand what it means for GDNs to 'align' to RESP, and how this could be demonstrated.

Public

Poll Survey

Network Planning Assurance (NPA)

5. Q&A

6. Next Steps & How to get involved

Jonny Sadler

RESP Engagement & Communications Manager

Timeline

Nov 2025

Dec 2025

Jan 2026

Feb 2026

Mar 2026

Summer 2026

RESP Methodology



17th: consultation launch



16th: consultation closes



End-March: proposed final Methodology submitted to Ofgem and DESNZ



Final RESP Methodology + 'you said, we did report'



Deep-dive Webinars - Round 1 (25th Nov -3rd Dec)



Deep-dive Webinars - Round 2 (if required)



RESP Forums – Winter 2025/26



RESP Forums – Summer 2026

tRESP



Final tRESP published

How to respond to the consultation

1. Please submit your response by **11.59pm on 16 January 2026**
2. Please submit your response via the **Qualtrics platform**:

English:



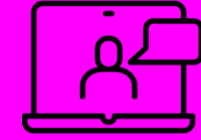
Cymraeg:



3. If you are not able to submit your response via Qualtrics, please contact box.consultations.resp@neso.energy by 9 January 2025, at the latest.
4. Responses are saved as you progress through the form, so you don't have to complete all questions at once. **Please note that they are only saved when you go to the next page of the survey.**
5. You will be able to download a copy of your responses as a PDF at the end.
6. FAQs will be published on the RESP Methodology consultation section of the NESO website
7. If you have any questions, please email: box.consultations.resp@neso.energy

RESP Forums – Winter 2026

Nation / Region	Date	Time
North West	3rd February	13:00–14:30
South East	5th February	10:00–11:30
London	5th February	14:00–15:30
North East, Yorkshire & the Humber	9th February	14:00–15:30
South West	10th February	14:00–15:30
Wales	10th February	10:00–11:30
East of England	11th February	11:00–12:30
West Midlands	11th February	13:30–15:00
East Midlands	12th February	13:00–15:00
Central England	12th February	14:00–15:30
Scotland	12th February	11:00–12:30



Forum 4 Agenda

(subject to change)

- Updates on wider RESP activities
- Final tRESP
- RESP Methodology Update
- SSEP Update
- Next Steps

Further information on RESP

Look out for future Forum dates



NESO newsletter sign up



RESP web pages



Contact the RESP team

box.resp@neso.energy

Thank you

