

Regional Energy System Planning (RESP) Methodology Consultation – Local Actor Support

27th November 2025

- Jonny Sadler – RESP Engagement & Communications Manager
- Faith Natukunda – RESP Senior Manager: Technical Delivery
- Drew Murphy – RESP Strategic Lead

Agenda

1. Welcome & Introduction – Jonny Sadler
2. Methodology Consultation – Faith Natukunda
3. Local Actor Support – Drew Murphy
– Poll Surveys
4. Q&A – All
5. Next Steps & How to get involved – Jonny Sadler

Methodology Consultation Document

<https://www.neso.energy/document/372156/download>



2. Methodology Consultation

Faith Natukunda

RESP Senior Manager: Technical Delivery

Five components of a RESP

The Regional Energy Strategic Plan

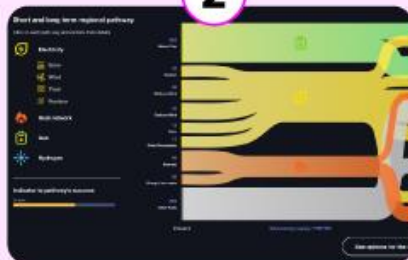
Nations and Regions Context

1



Pathways

2



Consistent Planning Assumptions

3



Spatial Context

4

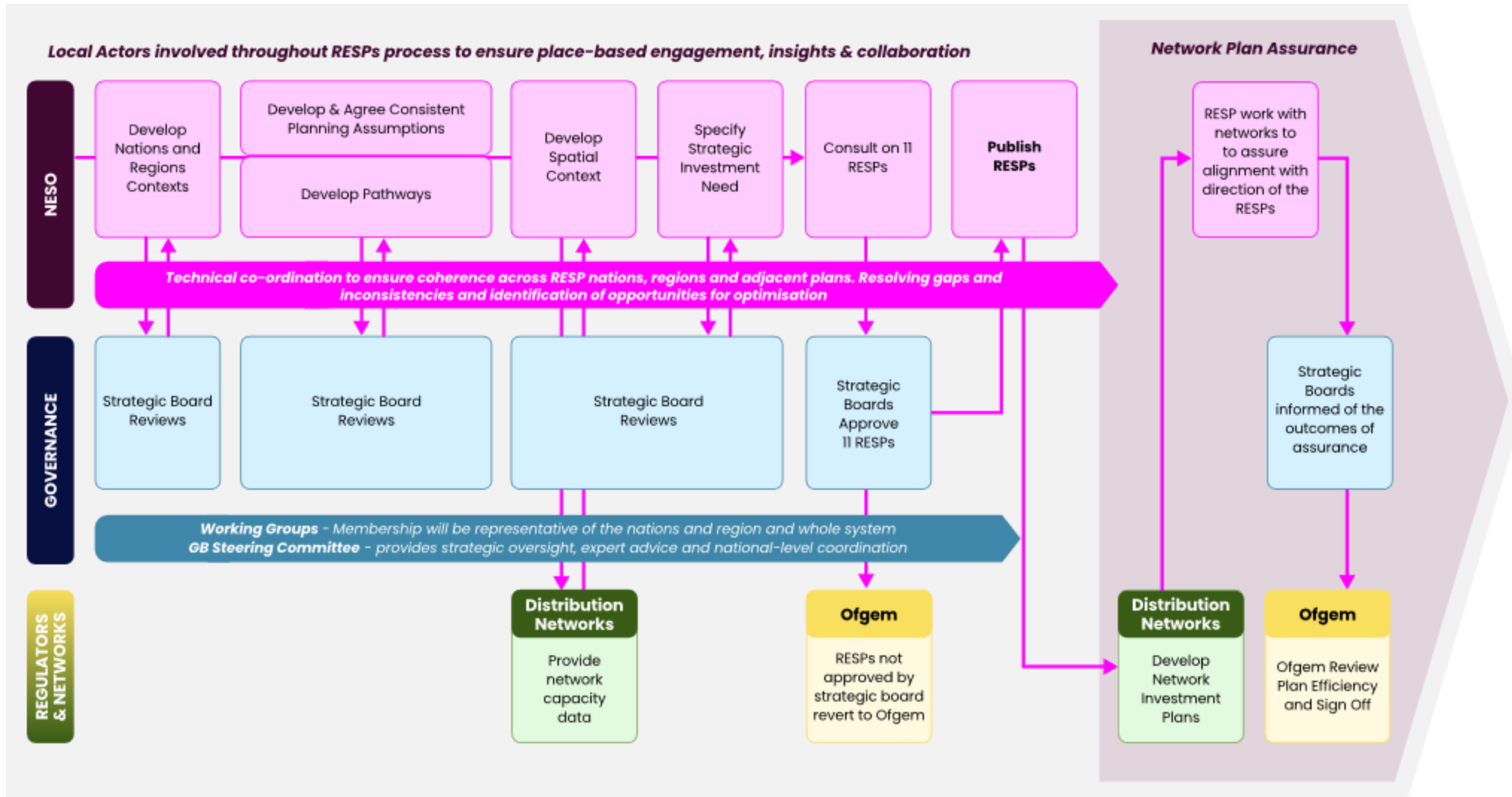


Specification of Strategic Investment Needs

5



End-to-end Process



3. Local Actor Support Overview

Drew Murphy
RESP Strategic Lead

Ofgem RESP Policy Framework

Ofgem outlined that local actor support is expected to:

- **Help local government** engage with RESP so they can link local energy plans and spatial plans into RESPs.
- **Make the process fair and open**, and provide **proportionate local support** so existing gaps don't get worse.
- **Focus on local authorities** but should **consider other local actors** involved in energy system planning who may also benefit from proportionate support to participate.

However, it is **not** within the scope of local actor support to **provide funding or personnel for local projects or spatial planning bodies**, as this would be an overreach of strategic energy planning which is ultimately funded by consumers through their energy bills.

Risks & Challenges

Resource
constraints

Engagement
inequality

Policy
misalignment
& uncertainty

Data &
analytical
challenges

Collaboration
barriers

Lack of
awareness

Objectives

1. Enable engagement with RESP

- Equip with knowledge & mechanisms needed to contribute effectively.
- Proportionate to each actor's needs and relevance.
- Focus on those that have limited influence but significant impact.

2. Facilitate collaboration

- Enable stronger partnerships among local actors to drive cohesive, efficient energy strategies.
- Leverage shared learning across nations, regions, and GB-wide.

3. Enhance technical and data capabilities

- Access to standardised, reliable and up-to-date data.
- Analytical & coordination tools to enable effective local energy planning.
- Without duplicating existing resources.

4. Strengthen local planning capabilities

- Guidance and frameworks to enhance local actors' energy planning and implementation efforts.

5. Ensure long term sustainability

- Create a support structure that is adaptable
- Foster continued participation and responsiveness to the evolving landscape
- At both local and regional levels.

Local Actor Support – Wave 1




ENERGY PLANNING LITERACY

- Briefings on NESO and Strategic Energy Planning.
- Focus on strategic board and working group members.
- Standard materials will be developed.
- Available online & open-access where possible.
- Delivery adapted to suit specific local actor needs.



SIGNPOSTING

- Library of external resources to support energy planning.
- Accessible online database, with local teams providing tailored guidance.
- To be updated regularly, recognising the energy support landscape is ever evolving.



SUPPORTING INPUT TO RESP

- Guidance for inputting into Context, Strategic Investment and other data collection exercises.
- How assumptions can be applied both within and outside of RESP.
- Facilitating or joining collaborative workshops to improve volume and quality of input.
- Advice on best practise for data quality; including toolkits and training.

Public

Poll Survey

Wave 1

Local Actor Support – Wave 2



TECHNICAL ADVICE

- *Advice on modelling and energy forecasting.*
- *Targeted to specific audiences based on their needs.*
- *Enhance collaboration & alignment of energy projects.*
- *Toolkits and area-specific approaches, reflecting different stakeholders and geographic characteristics.*



DATA PORTAL SUPPORT

- *Support to use open, interactive data portal collating data from NESO and others.*
- *Collaboration and sharing platform of geospatial data and wider best practise.*
- *Dissemination of success stories and lessons learned.*



INTEGRATION BETWEEN PLANS

- *Enhanced integration and alignment between local, regional and national energy and spatial planning activities.*
- *RESP teams supporting and upskilling spatial planning authorities and other local actors.*



Public

Poll Survey

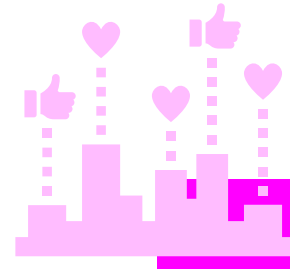
Wave 2

Local Actor Support – Wave 3



USING RESP OUTPUTS

- *Tools and methodologies*
- *How RESP outputs can inform planning, investment decisions, network upgrades and connections.*
- *Planning for high energy demand (e.g. industrial areas), storage and generation.*



SHARING BEST PRACTICE

- *NESO and other users share best-practice*
- *E.g. strategic investment projects; or how community benefits can be realised.*
- *Including both specific projects and proposals, as well as tools and suggested uses of RESP*
- *Facilitated through peer-to-peer working; tracking of projects and plans in a best-practice portfolio.*

Public

Poll Survey

Wave 3

What's next on Local Actor Support?

- Detailed **design and implementation** planning for local actor support Wave 1.
- Continued **engagement with local actors** to ensure products and services are relevant, fit for purpose and meet their support needs.
- Using methodology consultation feedback to **refine** Wave 1 products and services, as well as to **design and implement** further waves.
- Integrating local actor support into the **design of RESP outputs**, including data portals and other digital tools.

Public

Poll Survey

General Consultation Poll
Questions

4. Q&A

5. Next Steps & How to get involved

Jonny Sadler

RESP Engagement & Communications Manager

Timeline

Nov 2025

Dec 2025

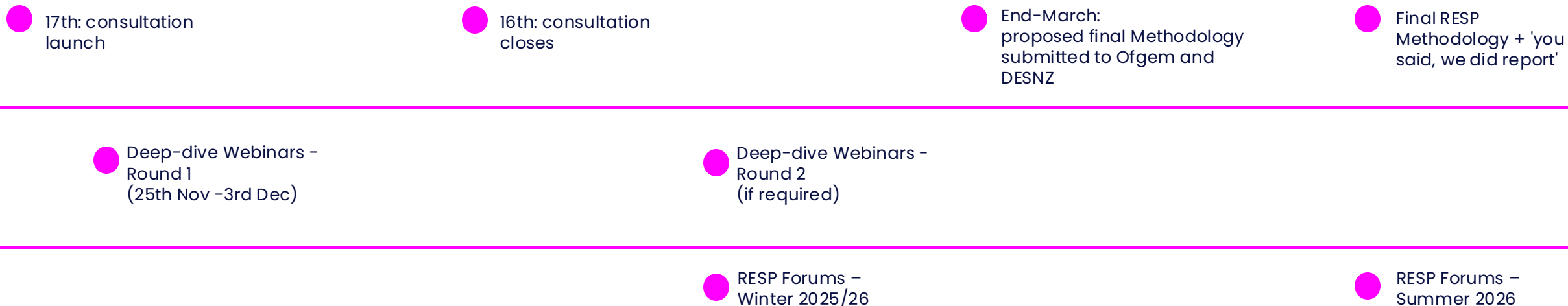
Jan 2026

Feb 2026

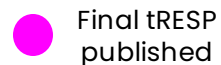
Mar 2026

Summer 2026

RESP Methodology



tRESP



How to respond to the consultation

1. Please submit your response by **11.59pm on 16 January 2026**
2. Please submit your response via the **Qualtrics platform**:

English:



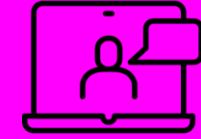
Cymraeg:



3. If you are not able to submit your response via Qualtrics, please contact box.consultations.resp@neso.energy by 9 January 2025, at the latest.
4. Responses are saved as you progress through the form, so you don't have to complete all questions at once. **Please note that they are only saved when you go to the next page of the survey.**
5. You will be able to download a copy of your responses as a PDF at the end.
6. FAQs will be published on the RESP Methodology consultation section of the NESO website
7. If you have any questions, please email: box.consultations.resp@neso.energy

RESP Forums – Winter 2026

Nation / Region	Date	Time
North West	3rd February	13:00–14:30
South East	5th February	10:00–11:30
London	5th February	14:00–15:30
North East & Yorkshire	9th February	14:00–15:30
South West	10th February	14:00–15:30
Wales	10th February	10:00–11:30
East of England	11th February	11:00–12:30
West Midlands	11th February	13:30–15:00
East Midlands	12th February	13:00–15:00
Central England	12th February	14:00–15:30
Scotland	12th February	11:00–12:30



Forum 4 Agenda

(subject to change)

- Updates on wider RESP activities
- Final tRESP
- RESP Methodology Update
- Strategic Energy Planning Update
- Next Steps

Further information on RESP

Look out for future Forum dates



NESO newsletter sign up



RESP web pages



Contact the RESP team

box.resp@neso.energy

Thank you

