

# **Regional Energy System Planning (RESP) Methodology Consultation – Nations and Regions Context**

**25th November 2025**

- Jonny Sadler – RESP Engagement & Communications Manager
- Katie Harrison – RESP Methodology Projects Lead
- Tom McKenzie-Brook – RESP Strategic Lead

# Agenda

1. Welcome & Introduction – Jonny Sadler
2. Methodology Consultation – Katie Harrison
3. Nations and Regions Context – Tom McKenzie-Brook  
– Poll Surveys throughout
4. Q&A – All
5. Next Steps & How to get involved – Jonny Sadler

# Methodology Consultation Document

<https://www.neso.energy/document/372156/download>



# 2. Methodology Consultation

Katie Harrison  
RESP Methodology Projects Lead

# Five components of a RESP

## The Regional Energy Strategic Plan

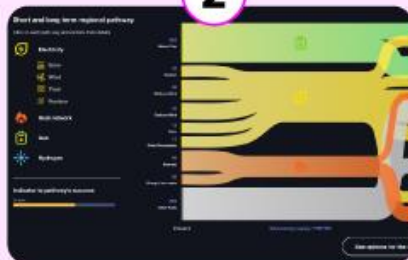
### Nations and Regions Context

1



### Pathways

2



### Consistent Planning Assumptions

3



### Spatial Context

4

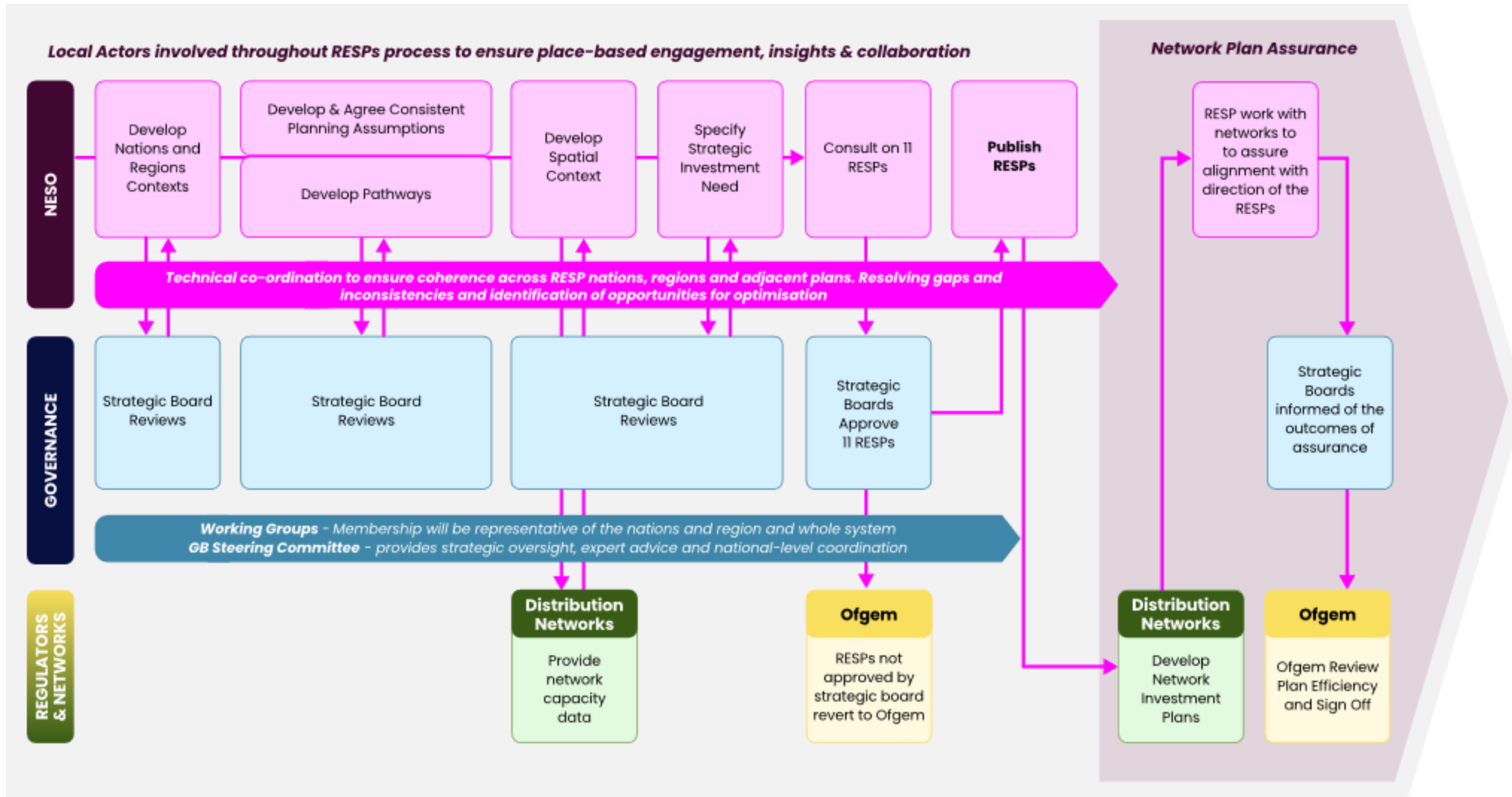


### Specification of Strategic Investment Needs

5



# End-to-end Process



# 3. Nations and Regions Context Overview

Tom McKenzie-Brook  
RESP Strategic Lead

# Introduction

## What Ofgem expects:

NESO must develop a Nations and Regions Context for each of the RESP nations and regions, drawing on relevant datasets as well as insights from national and regional stakeholder engagement.

The RESP Methodology must set out how NESO will develop the Nations and Regions Contexts to ensure it provides a comprehensive view of national and regional conditions and priorities, including key challenges, opportunities and implications for strategic energy planning in the RESP nations and regions.

## What NESO proposes:

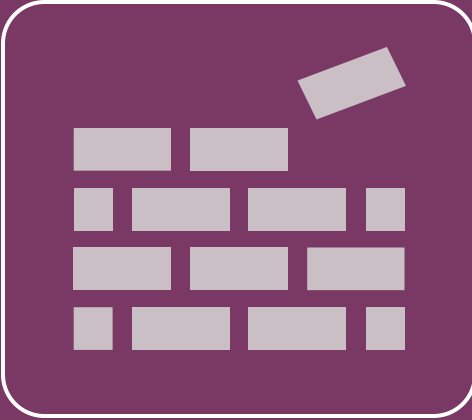
Each RESP will include a Context with a current view of the landscape relevant to each nation and region, and establishing priorities – through working with stakeholders – which will shape the future energy landscape and underpinning development of each RESP.

This will include energy and related topics such as economic and social factors like housing and transportation.

We will build upon the transitional RESP (tRESP) Context product to achieve this.



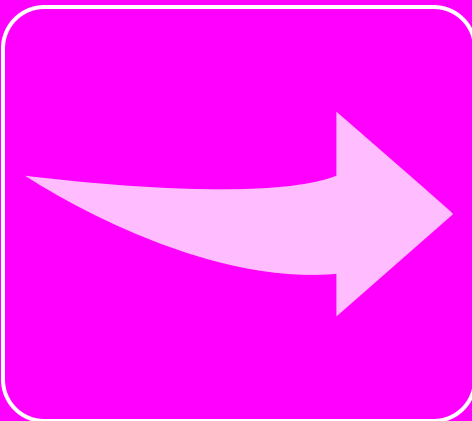
# The Need for the Context



## **The Nations and Regions Context is the foundation of each RESP.**

### The Context:

- Gives a comprehensive, long-term and whole system view of overarching conditions and priorities.
- Identifies the key challenges, opportunities and implications for each RESP.
- Clarifies the factors that will shape future energy needs across each nation and region.
- Will be developed using both public data and information provided to us by customers and stakeholders.



## **The Contexts will help guide the evolution of the energy system.**

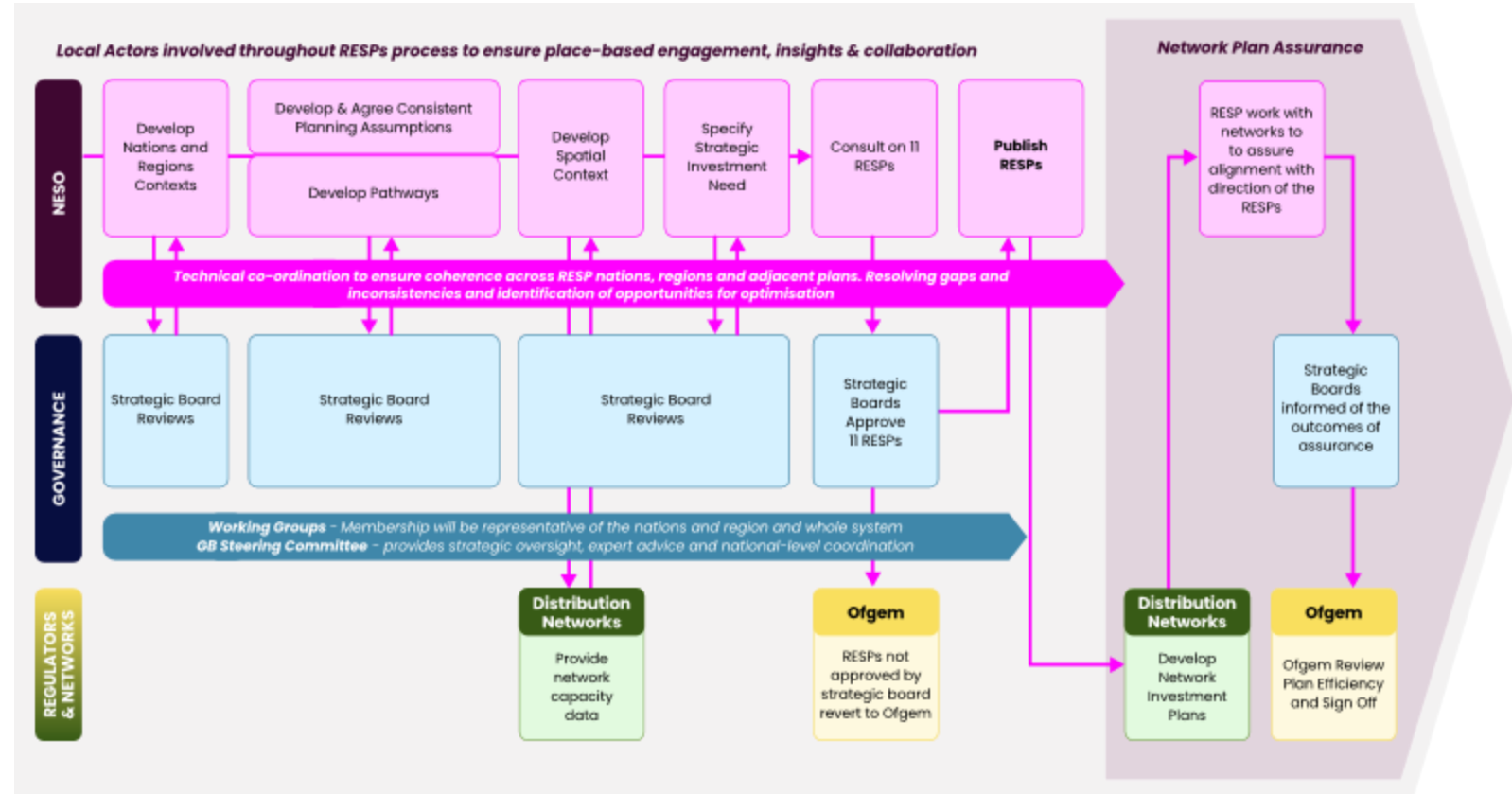
### Each Context will:

- Reflect local priorities and evidence, highlighting gaps or inconsistencies and where they can be addressed.
- Provide a coherent basis for the development of other RESP components, such as Pathways and Strategic Energy Need.
- Support alignment across stakeholders by presenting a shared picture of conditions and priorities.

# How Context Fits Into RESP

- The Context, and data/inputs collected during its production, feed into all subsequent RESP products – Pathways and beyond.
- The Context, and data collected to support it, enables collation and assessment of projects for the In-Development Register and Strategic Investment Needs.
- The overall Context product would be integrated within the unified RESP outputs.

## The RESP end-to-end process

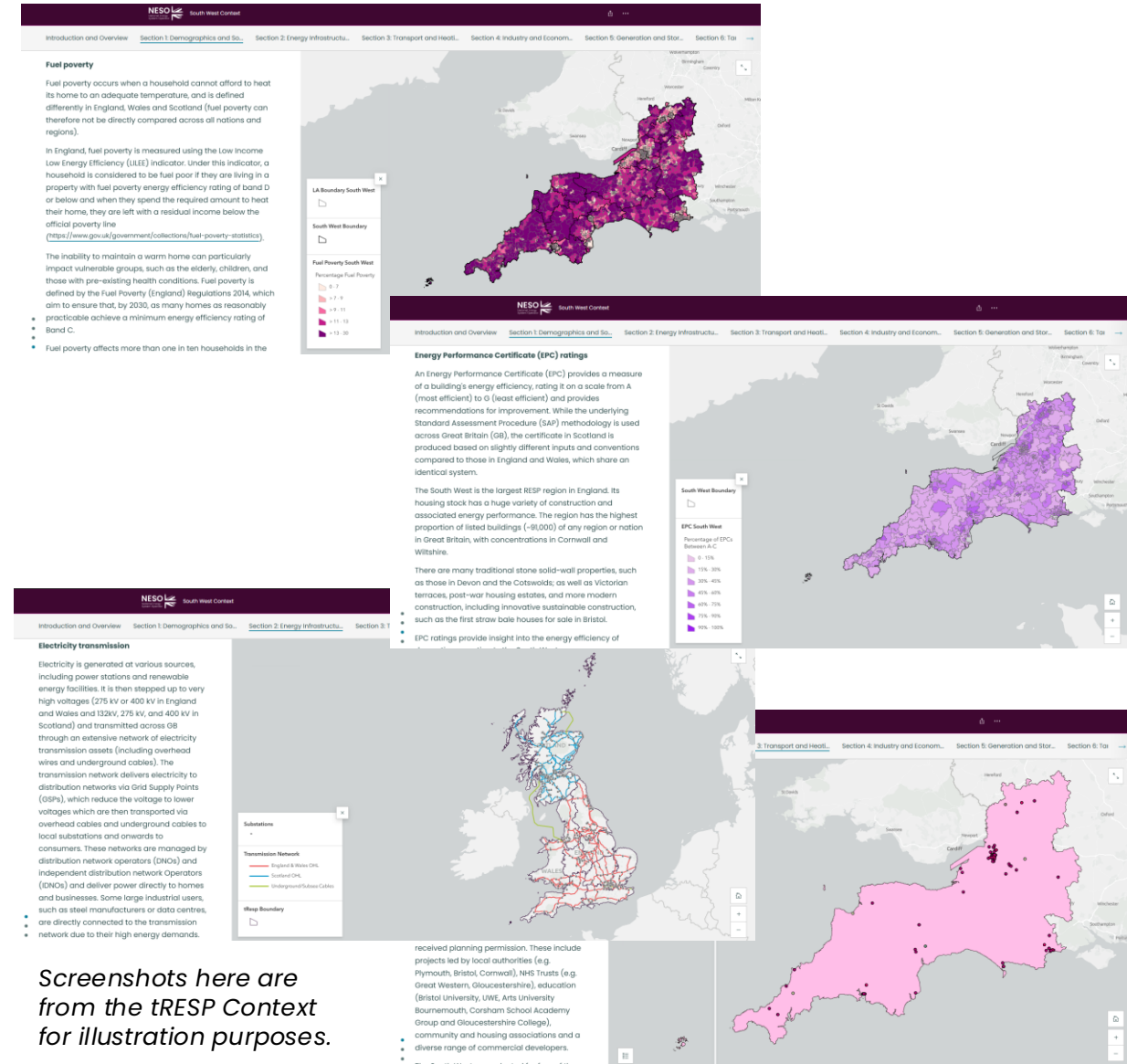


# The Context Output

The Context output is expected to take the form of a set of **geospatial maps and accompanying written narrative** providing information on two areas:

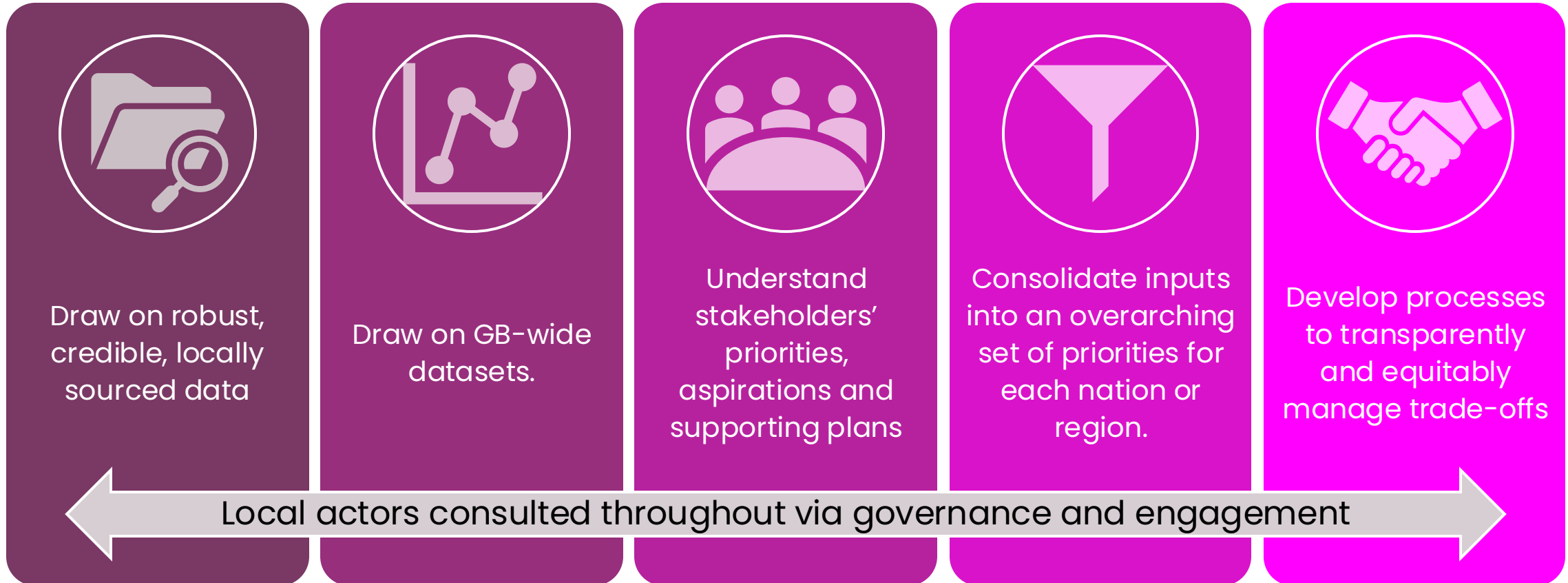
- 1. Current view of the landscape for each nation and region.** This will include energy and related topics such as economic and social factors.
- 2. Local priorities that guide long-term energy development.** Individual organisations' priorities will be brought together into consolidated priorities for the region or nation. The local priorities and the evidence underpinning them will be a key input into our decision-making; they will provide clarity on what nations and regions value and help inform choices.

The tRESP Context output will be used as basis for developing the full RESP Context output.



Screenshots here are from the tRESP Context for illustration purposes.

# How we will produce the Contexts



# Poll Survey

How we will produce  
the Contexts

# Moving from transitional to full

## tRESP

An **initial view of existing conditions** capturing key drivers of network investment relevant to ED3.

Focuses on the **current landscape**, with qualitative comment on the region or nation's future direction.

Utilising **national level public data sets** that can be **interrogated to a regional level**.

**Data challenges identified, some resolved** (accessibility, recency, quality, format, granularity and underlying assumptions).

Engagement in **RESP forums and bi-laterals**.  
**Governance at a GB level.**

A **single output** per region in the September consultation.



## Full RESP

**Broader and deeper view of existing conditions;** more detail, categories, whole energy.

**Adds a forward view;** articulation of Consolidated Priorities for the future.

**Additional regional data sets** provided by local actors, to complement national data.

Opportunity to **address data challenges** not resolved by tRESP.

Builds on tRESP through **structured engagement and governance at a regional level.**

**More integrated** with other products and **further development** of the geospatial interactive tool.

# Poll Survey

Moving from  
transitional to full

# Context Development: Overview

Produced from quantitative and qualitative data sources.

Data will be collected and consolidated to ensure it meets NESO requirements.

NESO will provide independent assurance to inputs and outputs.

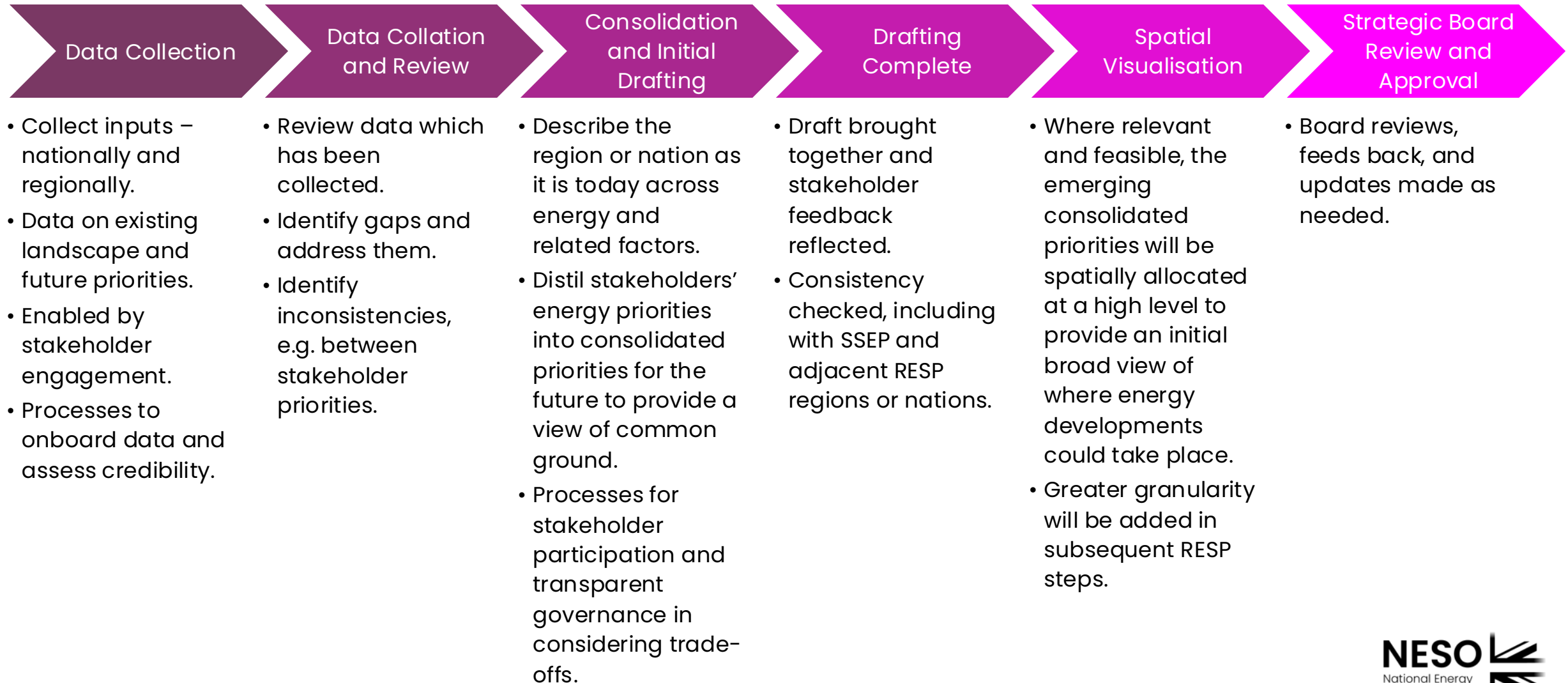
RESP Strategic Boards and Working Groups, plus other engagement channels, used to gain insights and feedback from local actors.

All 11 Contexts will have a similar format and content. However, there could be considerable variation in priorities and emphasis.

Produced once per RESP cycle and will be published alongside other RESP components.



# Context Development: Process



# Governance and Engagement

	NESO	Local Actors	Working Groups	Strategic Board
Role	<b>Responsible for developing, implementing and delivering</b> the Contexts.	Have a role, interest or influence in a specific RESP nation or region, whether the full nation / region or a smaller geographical area.  Likely to be <b>interested in using / applying RESP as well as providing data</b> and feedback at key steps in its development.	Comprised of Local Actors.  <b>Guide and provide input</b> into Regional Context production.  <b>Not decision-making.</b>	<b>Recommends the Context for use</b> further in RESP, <b>and approves</b> when RESPs submitted.  Maintains <b>overall oversight and decision-making</b> power.
Input Provided to Context Production	<b>Develops</b> the Contexts.  Collects, reviews and utilises <b>data</b> .  <b>Ensures the output reflects</b> the nation or region.	<b>Provide local data</b> and details of local, organisational, or regional ambitions (e.g. demographics, decarbonisation ambitions, industrial geographies, local priorities and policies).	<b>Assist with options development</b> , gaps, inconsistencies and forming the Consolidated Priorities.  <b>Review trade-offs and build consensus.</b> NESO will review perspectives raised by working group members and will feed these into Context drafting.	<b>Provides assurance</b> by considering whether the Context represents the whole region and its ambitions, and has factored in available inputs.  <b>Holds NESO to account</b> in ensuring evidence-based, transparent and exhaustive decision-making.
Engagement Opportunities	n/a	Opportunity through Place-Based Engagement to <b>feed in at set points</b> , e.g. consensus building and coordination across vectors and sectors, or to test emerging outputs.  <b>Ad-hoc interactions</b> may be necessary for targeted needs.	<b>Engaged throughout</b> the Context production process as <b>the key means of gathering feedback</b> on development.  <b>Roundtable held to holistically consider all topics.</b>	<b>Engaged at critical junctures</b> throughout the Context production process to ensure the output meets overall expectations.

# Poll Survey

Overarching questions  
plus Governance and  
Engagement

## 4. Q&A

# 5. Next Steps & How to get involved

Jonny Sadler

RESP Engagement & Communications Manager

# Timeline

**Nov 2025**

**Dec 2025**

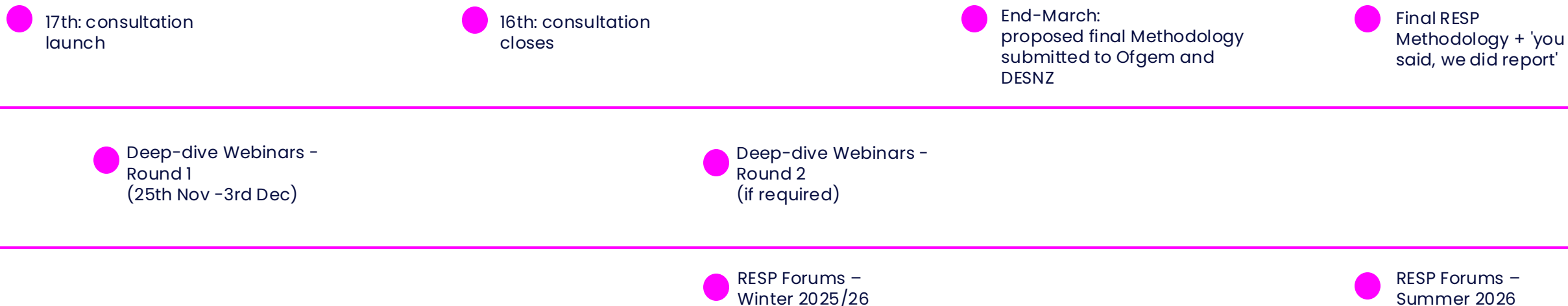
**Jan 2026**

**Feb 2026**

**Mar 2026**

**Summer 2026**

## RESP Methodology



## tRESP

Final tRESP published

# How to respond to the consultation

1. Please submit your response by **11.59pm on 16 January 2026**
2. Please submit your response via the **Qualtrics platform**:

**English:**



**Cymraeg:**



3. If you are not able to submit your response via Qualtrics, please contact [box.consultations.resp@neso.energy](mailto:box.consultations.resp@neso.energy) by 9 January 2025, at the latest.
4. Responses are saved as you progress through the form, so you don't have to complete all questions at once. **Please note that they are only saved when you go to the next page of the survey.**
5. You will be able to download a copy of your responses as a PDF at the end.
6. FAQs will be published on the RESP Methodology consultation section of the NESO website
7. If you have any questions, please email: [box.consultations.resp@neso.energy](mailto:box.consultations.resp@neso.energy)

# RESP Forums – Winter 2026

Nation / Region	Date	Time
North West	3rd February	13:00–14:30
South East	5th February	10:00–11:30
London	5th February	14:00–15:30
North East & Yorkshire	9th February	14:00–15:30
South West	10th February	14:00–15:30
Wales	10th February	10:00–11:30
East of England	11th February	11:00–12:30
West Midlands	11th February	13:30–15:00
East Midlands	12th February	13:00–15:00
Central England	12th February	14:00–15:30
Scotland	12th February	11:00–12:30



## Forum 4 Agenda

(subject to change)

- Updates on wider RESP activities
- Final tRESP
- RESP Methodology Update
- Strategic Energy Planning Update
- Next Steps



# Further information on RESP

Look out for future Forum dates



NESO newsletter sign up



RESP web pages



Contact the RESP team

[box.resp@neso.energy](mailto:box.resp@neso.energy)

# Thank you

