

# RESP Methodology Consultation Launch

**17 November 2025**

Bridget Hartley – Head of RESP

Faith Natukunda – RESP Senior Manager: Technical Delivery

Jonny Sadler – RESP Engagement & Communications Manager

Katie Harrison – RESP Methodology Projects Lead

# Agenda

1. Welcome & Agenda Overview – Jonny Sadler
2. Introduction – Bridget Hartley
3. Overview of RESP – Bridget Hartley
4. Methodology Consultation – Faith Natukunda and Katie Harrison
5. Next Steps & How to Get Involved – Jonny Sadler
6. Q&A – All
7. Poll – All

# Methodology Consultation Document

<https://www.neso.energy/document/372156/download>



## 2. Introduction

Bridget Hartley  
Head of RESP

# **3. Overview of Regional Energy Strategic Planning**

Bridget Hartley  
Head of RESP



# Our role

Working with the GB nations and regions to produce **eleven Regional Energy Strategic Plans (RESPs)**, to ensure that local areas get the energy infrastructure they need to help meet local and national goals.



# RESPs – why do we need them?

The  
Why...

1

**Local voices & needs** – ensure that local voices & needs are at the heart of the way we plan the energy system

2

**To drive investment** – ensure local areas get the energy infrastructure they need to realise local goals

3

**Ensure efficient network investment** – that keeps bills low by looking at the whole energy system



# RESP Nations & Regions

- Scotland
- North East and Yorkshire
- North West
- East Midlands
- West Midlands



The  
Where...

- Wales
- Central England
- East
- Greater London
- South East
- South West

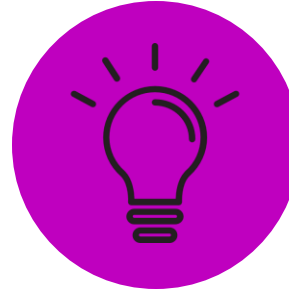


# How we will work: Six guiding principles

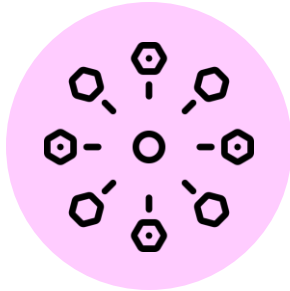
The  
How...



Place based



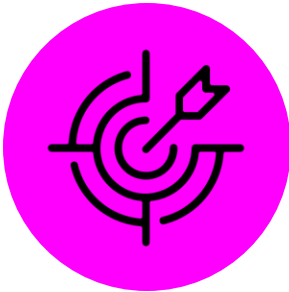
Proactive



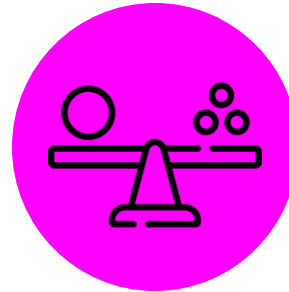
Whole-system



Transparent &  
collaborative

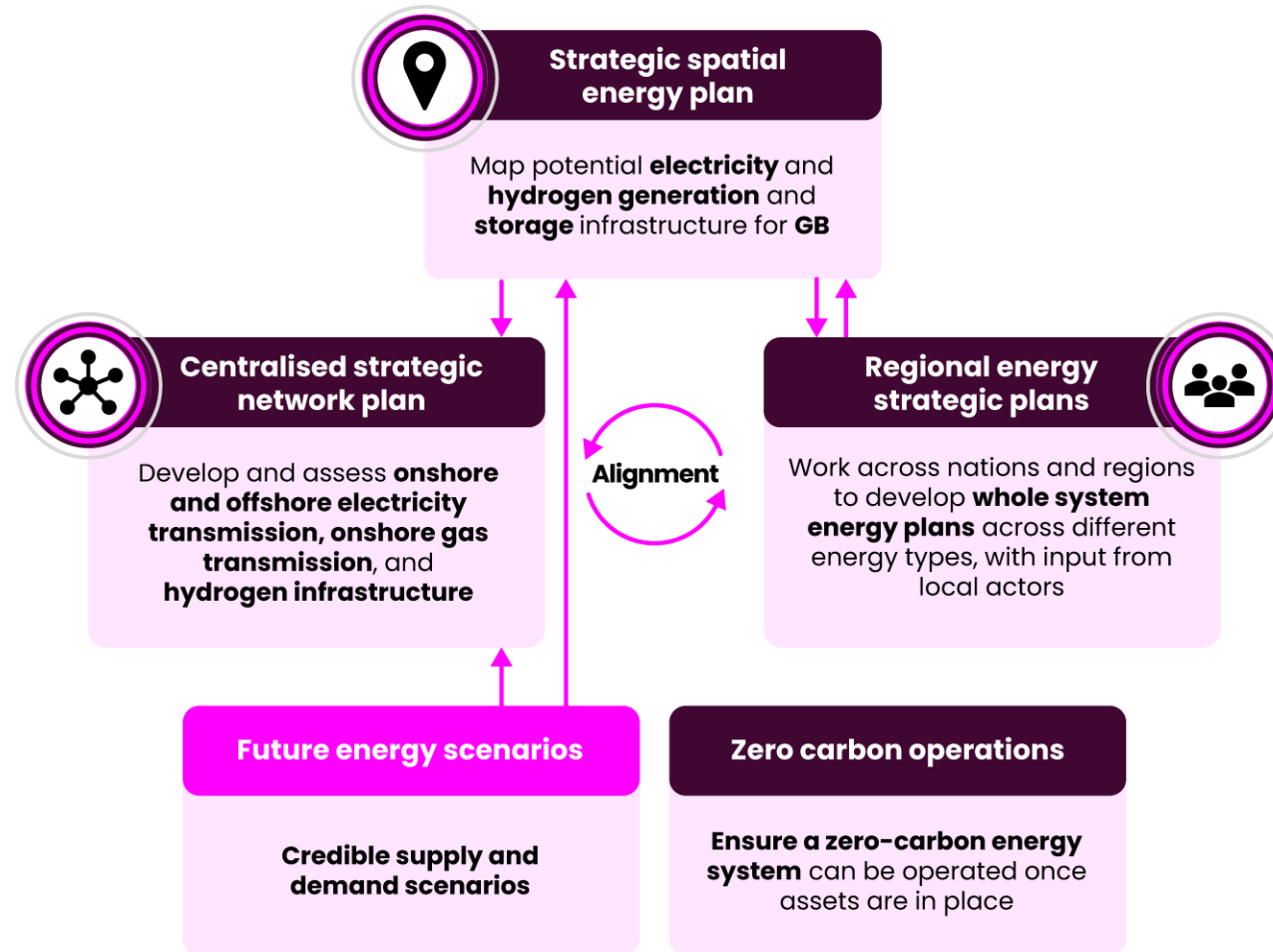


Vision led



Fair

# Strategic energy planning (SEP)



# 4. Methodology Consultation

Faith Natukunda – RESP Senior Manager: Technical Delivery

Katie Harrison – RESP Methodology Projects Lead

# Five components of a RESP

The  
What...

## The Regional Energy Strategic Plan

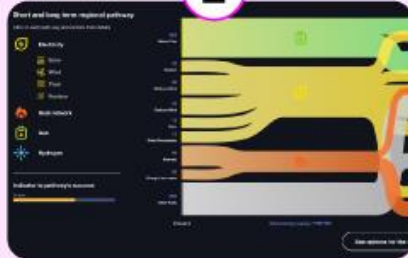
### Nations and Regions Context

1



### Pathways

2



### Consistent Planning Assumptions

3



### Spatial Context

4



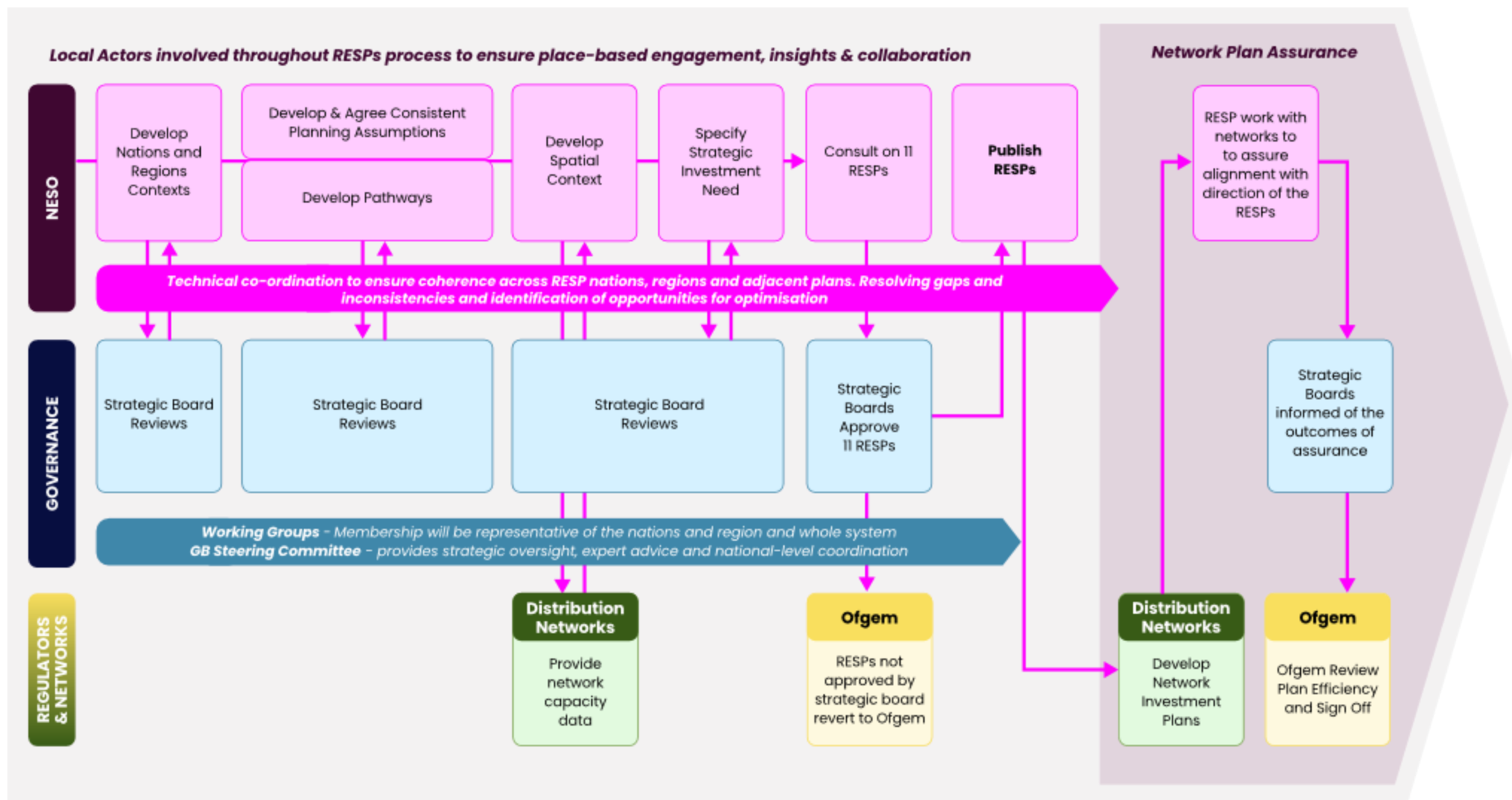
### Specification of Strategic Investment Needs

5

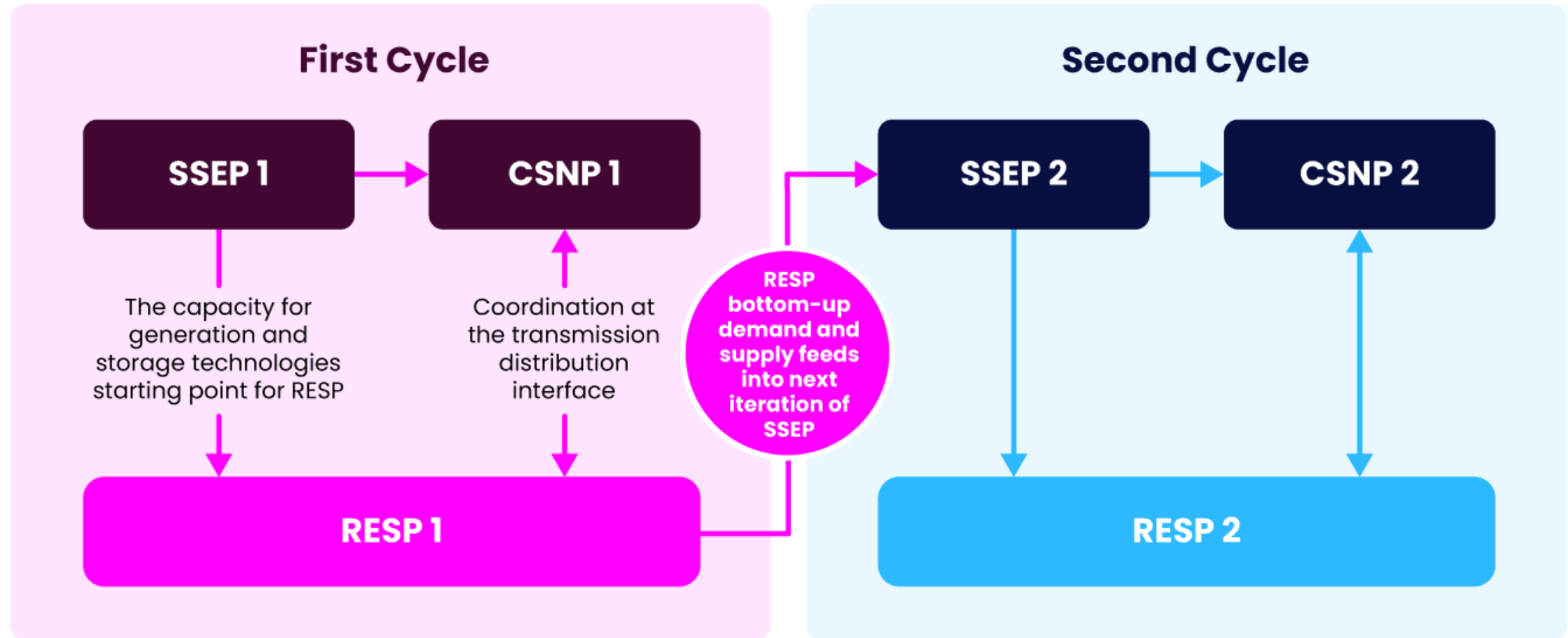




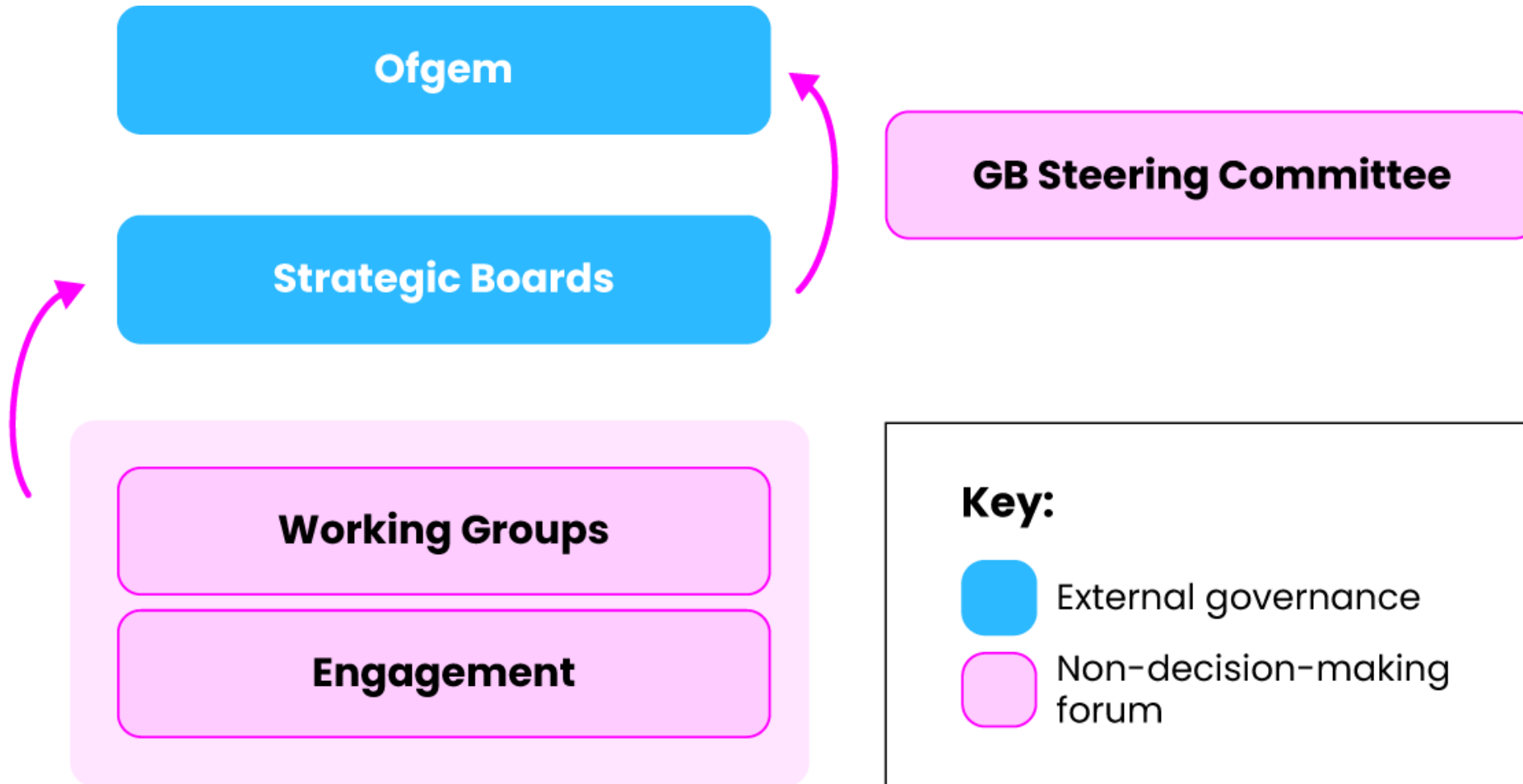
# End-to-end Process



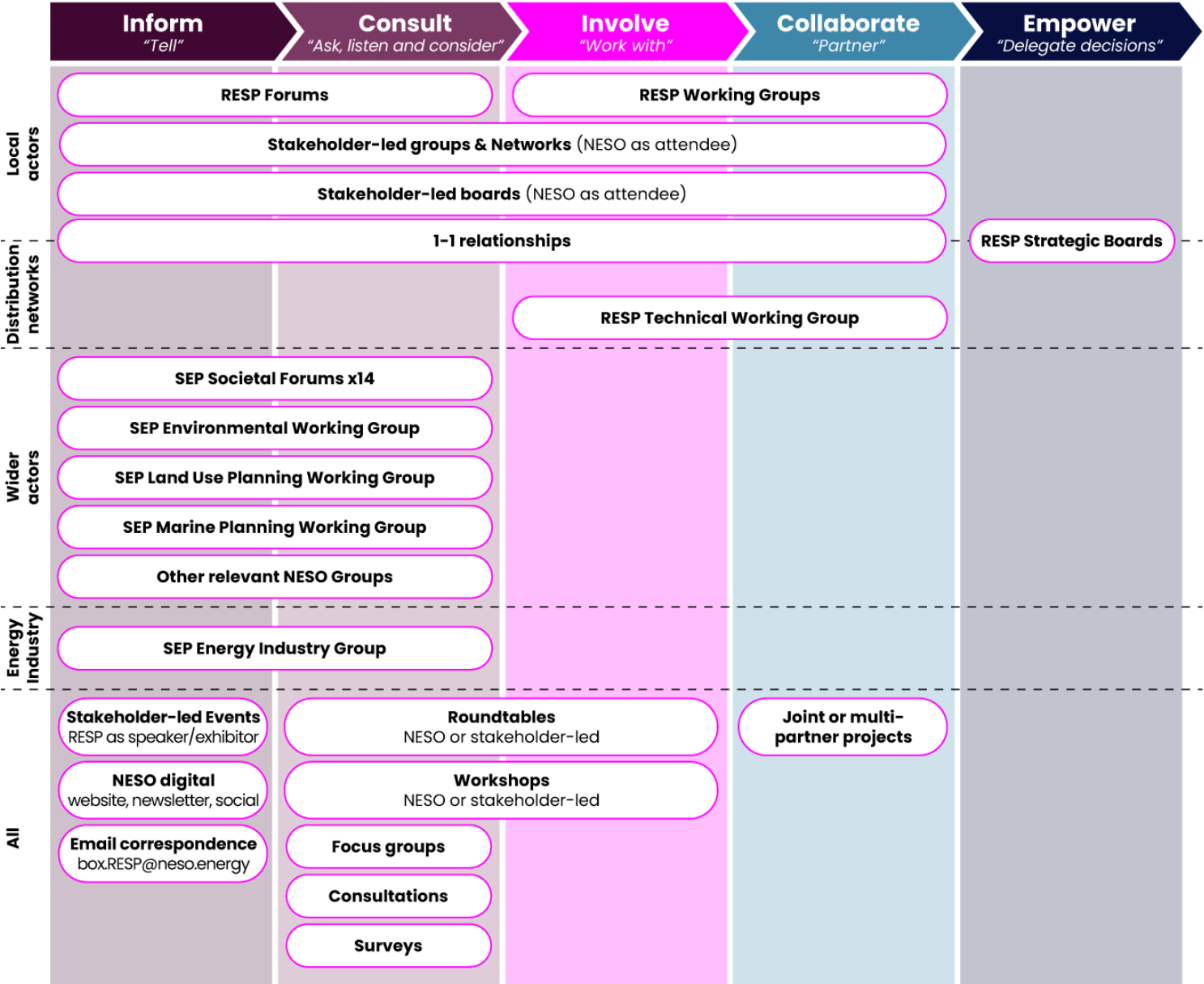
# Interaction with Strategic Energy Planning



# Governance



# Engagement





# Local Actor Support



## Public Sector

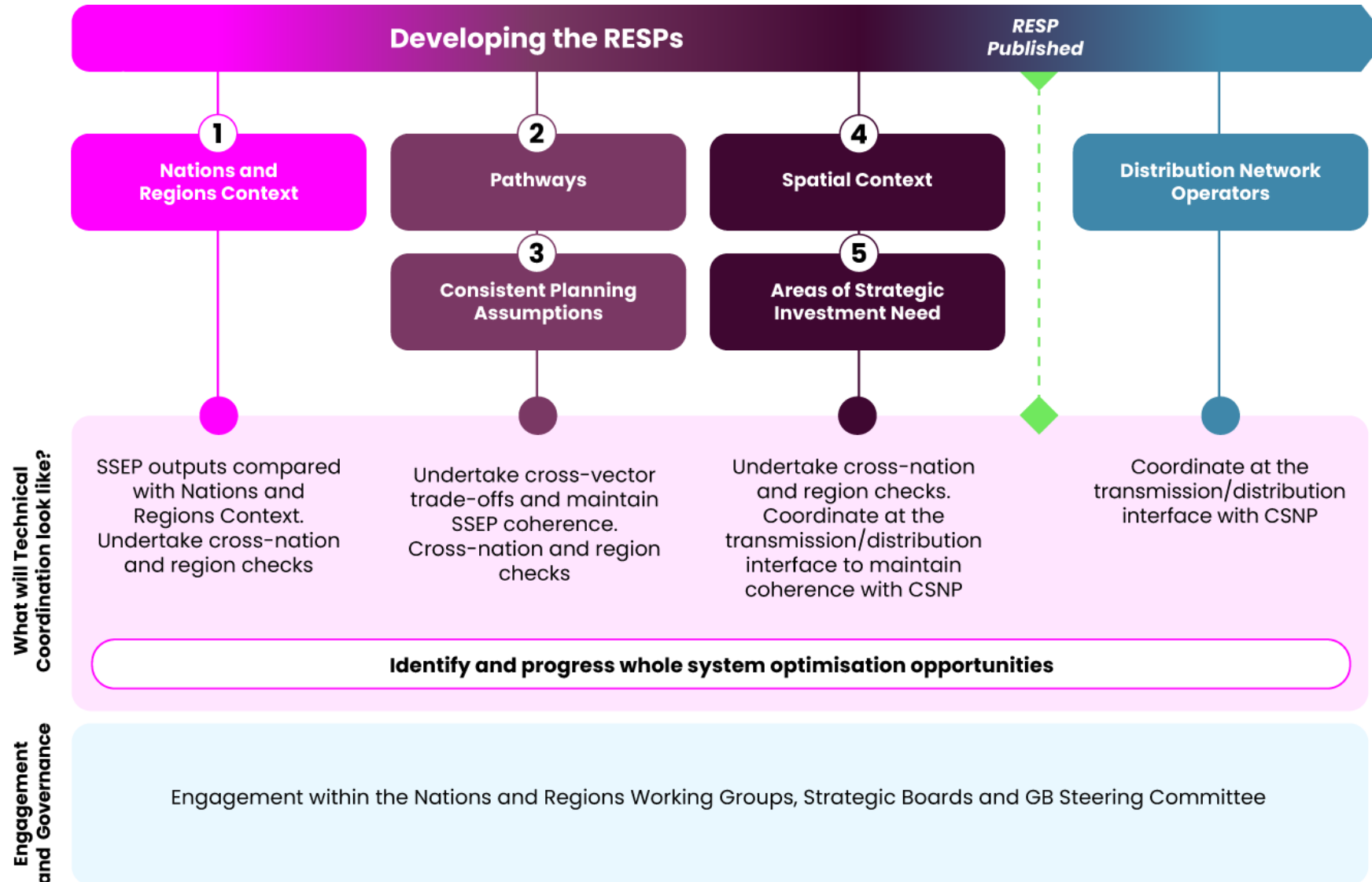
- Local authorities (upper tier and lower tier)
- Strategic authorities
- UK, Scottish and Welsh government bodies
- Protected landscape bodies
- Wider public sector
- Sub-national transport bodies



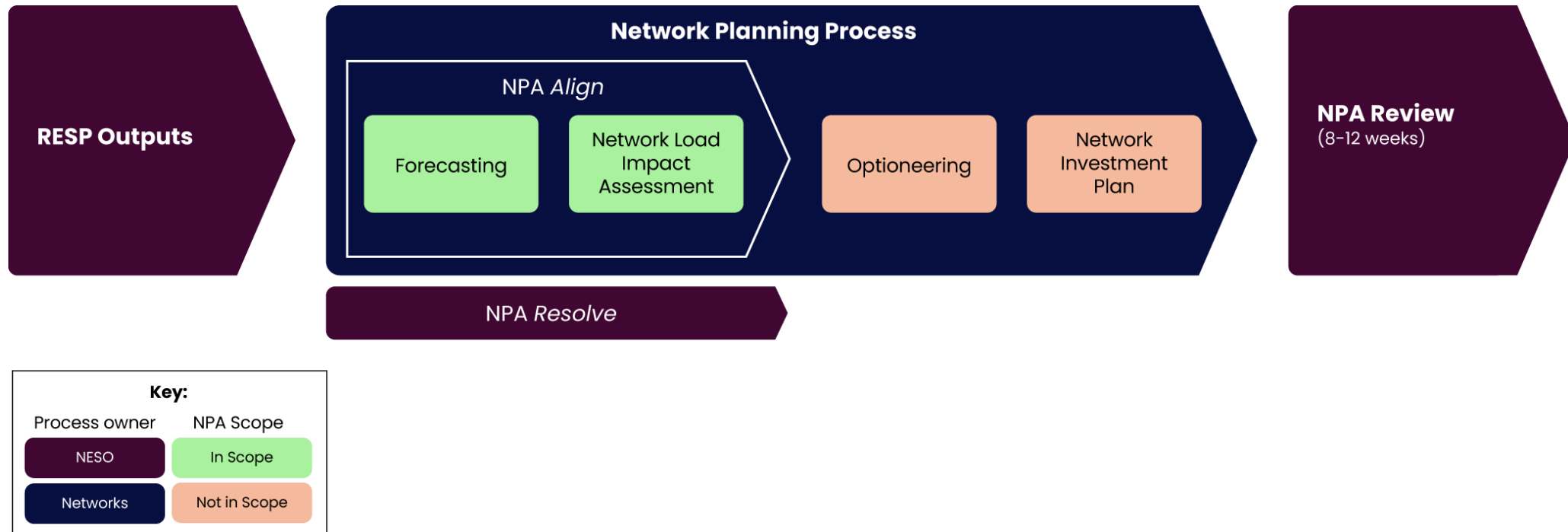
## Community and third sector

- Community energy groups
- Community action groups
- Energy and fuel poverty NGOs
- Other NGOs

# Technical Coordination



# Network Planning Assurance



# Societal & Environmental Consideration

## Societal Considerations

Energy is vital to enabling national, regional and local priorities such as economic growth, job creation, social programmes and community initiatives.

Our societal approach will focus on supporting the decision making of strategic boards.

We propose translating the outputs of the RESPs into indicative societal impacts that reflect the nations and regions priorities.

Ensure compliance with Public Sector Equality Duty (PSED)

### Types of impacts we may consider:

#### Environmental indicators



Air quality



Ecosystem services & Biodiversity



Visual pollution, cultural values

#### Socio-economic indicators



Community health



Local Employment



Fuel poverty

## Environmental Considerations

The protection and enhancement of the environment goes hand in hand with meeting net zero targets.

We have reviewed current environmental approaches and legislation to understand what is required for the RESPs. We have determined that:

- An HRA is not required for the RESPs and will apply to other competent authorities who are either adopting their own plans or consenting specific projects.
- An SEA is not required as the RESPs will not be prescriptive enough to constrain future decision-making, they will only influence it.

We propose for the first RESPs to leverage the relevant geospatial datasets from the SSEP.

We will also **embed environmental considerations** by considering environmental assessments, regulations, and outcomes or commitments from existing environmental reports within the nations and regions.



# 5. Next Steps & How to Get Involved

Jonny Sadler

RESP Engagement &  
Communications Manager

# Timeline

**Nov 2025**

**Dec 2025**

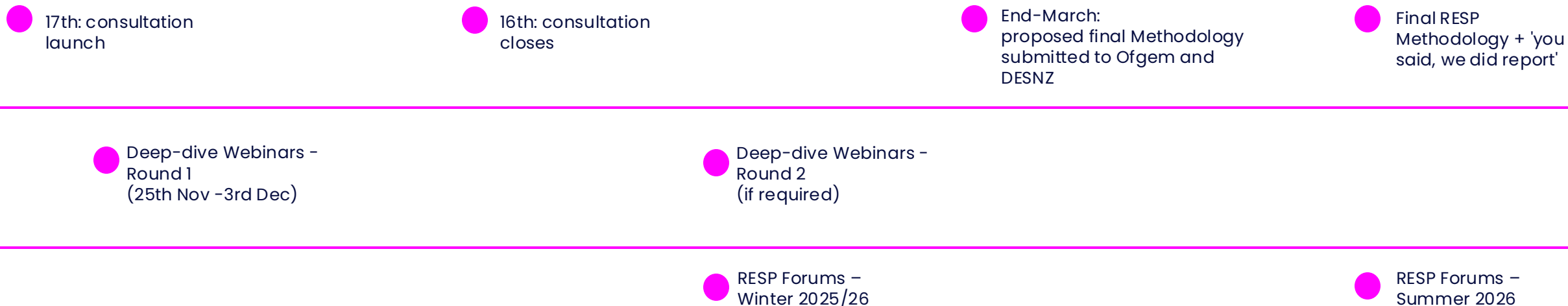
**Jan 2026**

**Feb 2026**

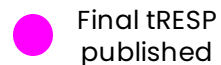
**Mar 2026**

**Summer 2026**

## RESP Methodology



## tRESP



# How to respond to the consultation

1. Please submit your response by **11.59pm on 16 January 2026**
2. Please submit your response via the **Qualtrics platform**:

**English:**



**Cymraeg:**



3. If you are not able to submit your response via Qualtrics, please contact [box.consultations.resp@neso.energy](mailto:box.consultations.resp@neso.energy) by 9 January 2025, at the latest.
4. Responses are saved as you progress through the form, so you don't have to complete all questions at once. **Please note that they are only saved when you go to the next page of the survey.**
5. You will be able to download a copy of your responses as a PDF at the end.
6. FAQs will be published on the RESP Methodology consultation section of the NESO website
7. If you have any questions, please email: [box.consultations.resp@neso.energy](mailto:box.consultations.resp@neso.energy)

# RESP Forums – Winter 2026

| Nation / Region        | Date          | Time        |
|------------------------|---------------|-------------|
| North West             | 3rd February  | 13:00–14:30 |
| South East             | 5th February  | 10:00–11:30 |
| London                 | 5th February  | 14:00–15:30 |
| North East & Yorkshire | 9th February  | 14:00–15:30 |
| South West             | 10th February | 14:00–15:30 |
| Wales                  | 10th February | 10:00–11:30 |
| East of England        | 11th February | 11:00–12:30 |
| West Midlands          | 11th February | 13:30–15:00 |
| East Midlands          | 12th February | 13:00–15:00 |
| Central England        | 12th February | 14:00–15:30 |
| Scotland               | 12th February | 11:00–12:30 |



## Forum 4 Agenda

(subject to change)

- Updates on wider RESP activities
- Final tRESP
- RESP Methodology Update
- Strategic Energy Planning Update
- Next Steps



# Further information on RESP

Look out for future Forum dates



NESO newsletter sign up



RESP web pages



Contact the RESP team

[box.resp@neso.energy](mailto:box.resp@neso.energy)

## 6. Q&A

# 7. Poll

# Thank you

