

Date: Thursday 23 Oct 2025

BSUoS Final Tariff: £15.69/MWh

Total Outturn: £3.97m

Daily Balancing Costs

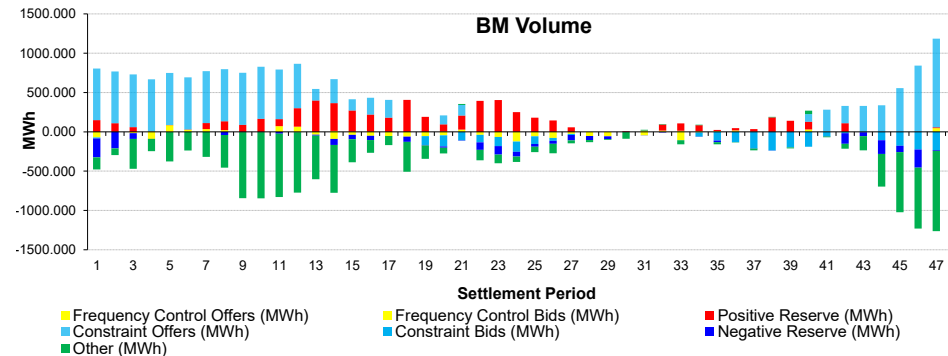
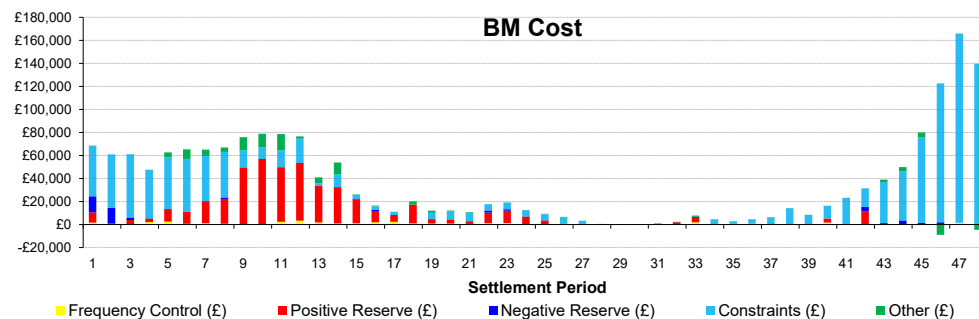
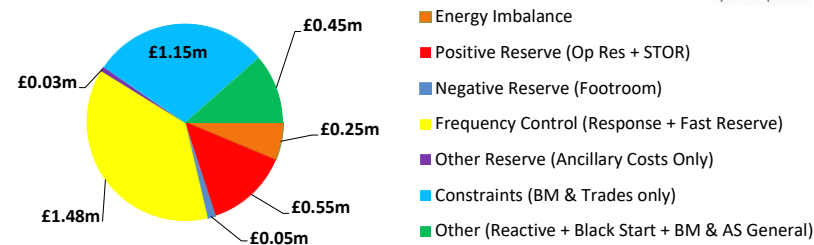
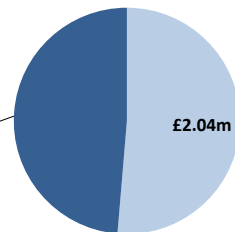


BM Cost (Indicative)

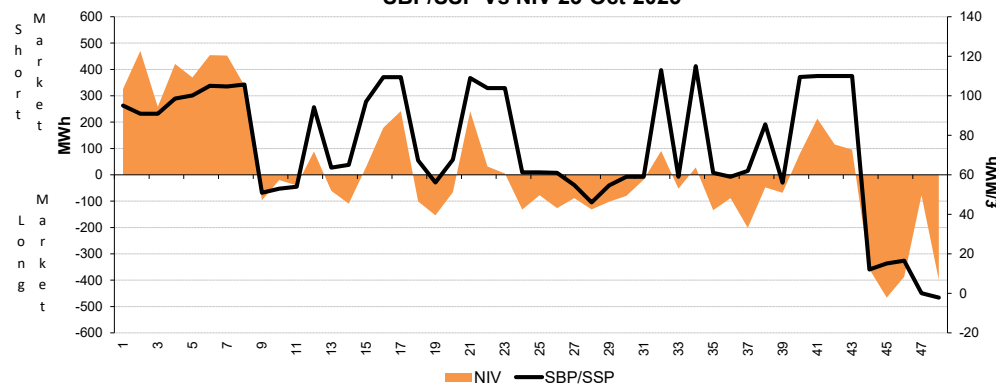
AS Cost (Estimate)

£1.93m

£2.04m



SBP/SSP Vs NIV 23-Oct-2025



Commentary

The market alternated between long and short throughout the day. Trades were required for Downward Regulation. BM Actions helped to manage thermal constraints in England and Wales during the morning and evening periods and then in Scotland later at night. Trades and BM Actions supported Voltage Control. Further BM Actions supported System Inertia.

Public