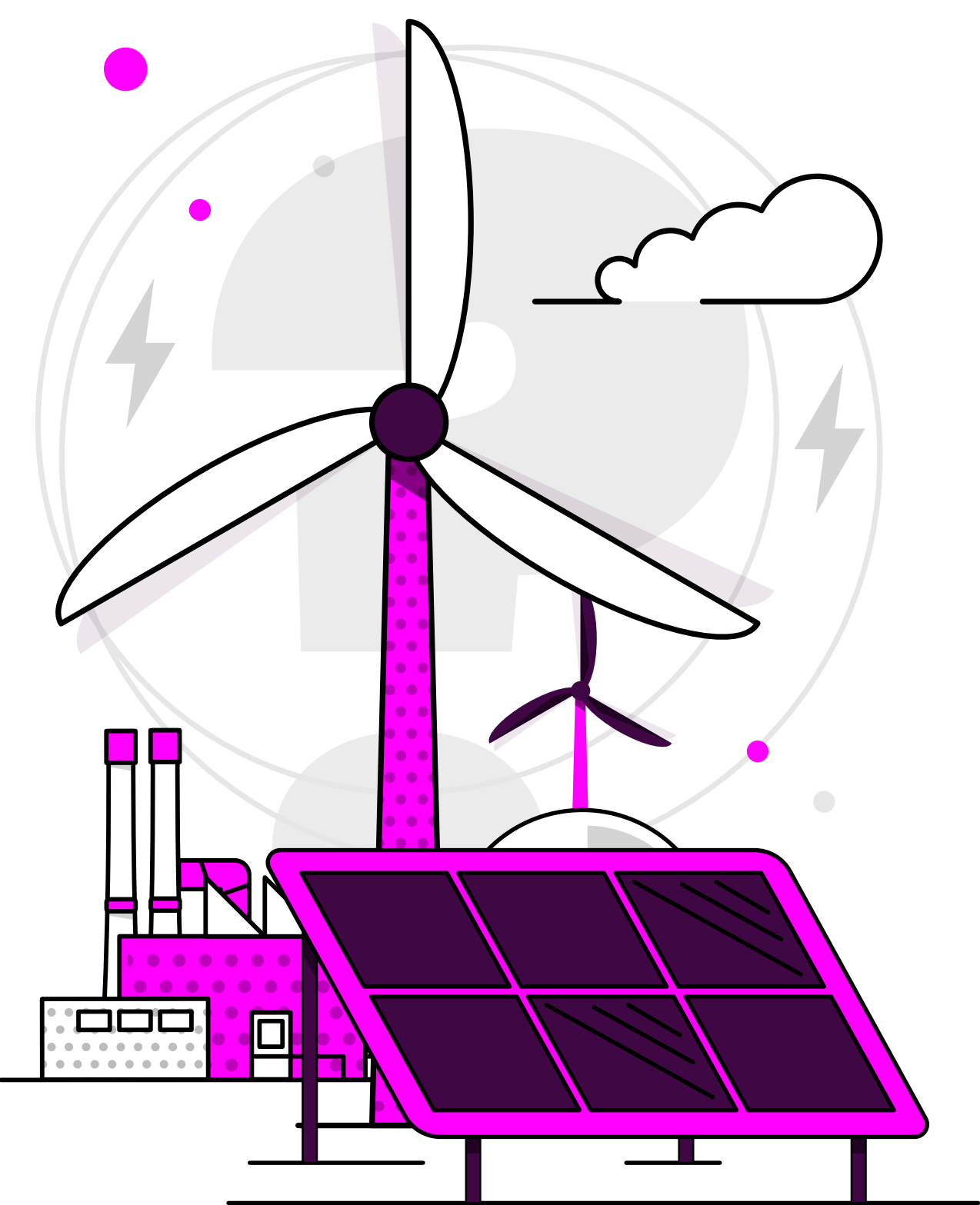


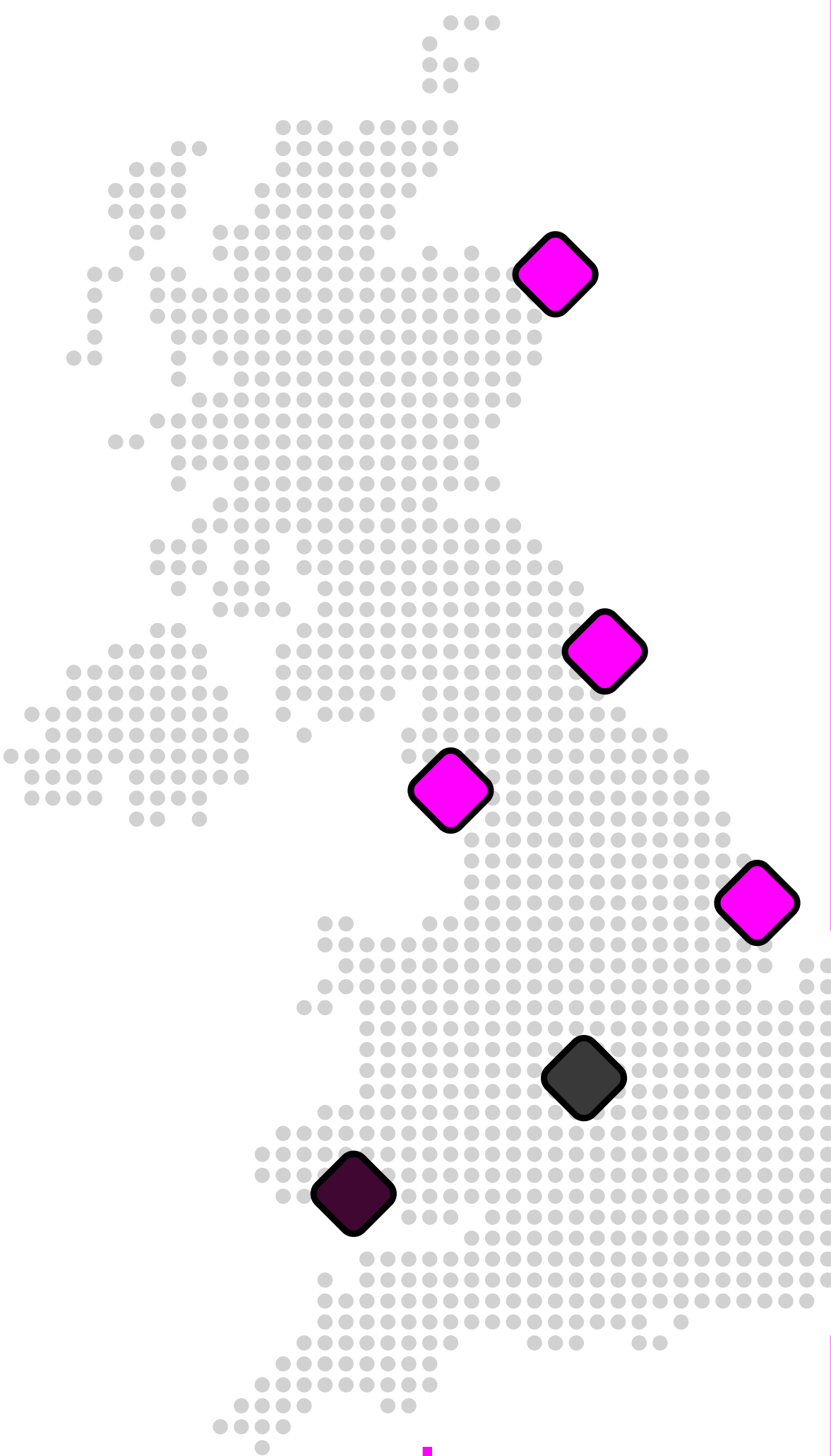
Britain's Energy Explained: August 2025

How was our electricity generated?



			change from previous month
Gas		23.2%	1.7% ▾
Wind		26.1%	7% ▴
Nuclear		11%	3.7% ▾
Biomass		7.7%	0.5% ▾
Solar		10.1%	0.6% ▾
Imports		18.9%	0.6% ▾
Hydro		1.2%	0.1% ▴
Storage		1.7%	0% –

Where has our gas come from?*



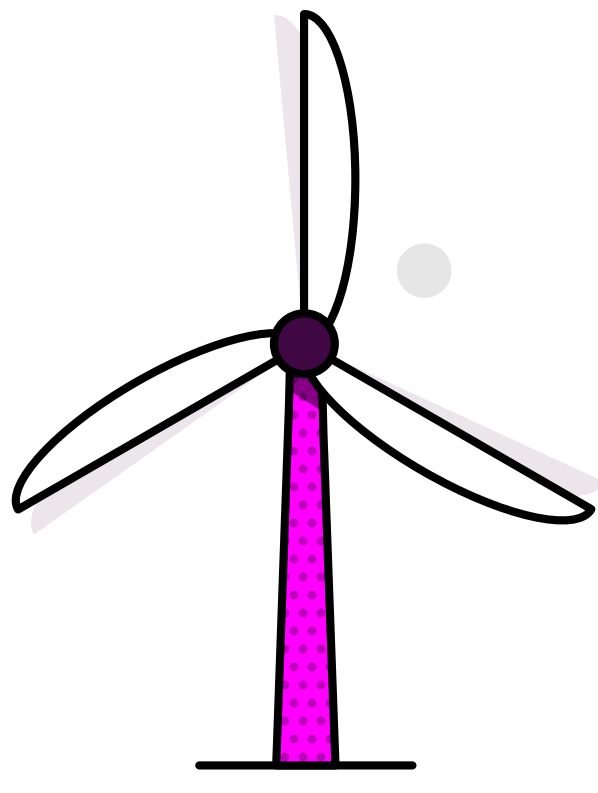
Entry Points			change from previous month
UK/Norwegian gas fields		90%	1% ▾
LNG imports		4%	0% –
European imports		0%	0% –
Storage withdrawal		6%	1% ▴

Where is our gas used?

Distribution networks		32%	5% ▴
Power stations		20%	1% ▴
EU & Ireland exports		33%	10% ▾
Industrial		2%	0% –
Storage		12%	3% ▴

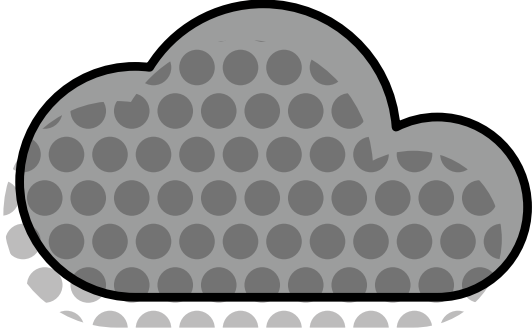
*Gas data is yet to reconcile. For most up-to-date gas data, visit data.nationalgas.com

Carbon intensity of electricity



Zero carbon

62% of electricity came from zero carbon sources
89% peak zero carbon share

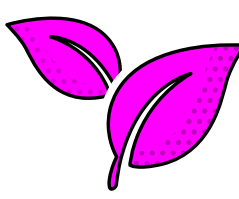


Carbon intensity

123 gCO₂/kWh average

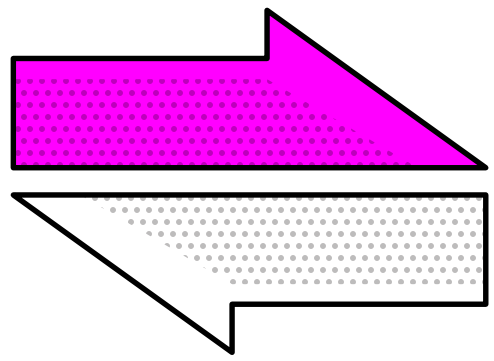


Greenest time of the month 1pm on 31 August



Lowest carbon intensity **34** gCO₂/kWh

How much electricity we used



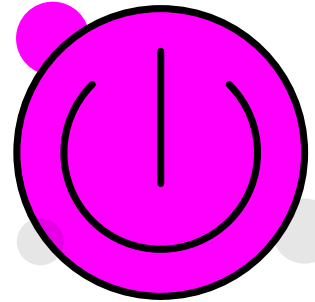
Imports & exports



Energy in
4,086 GWh

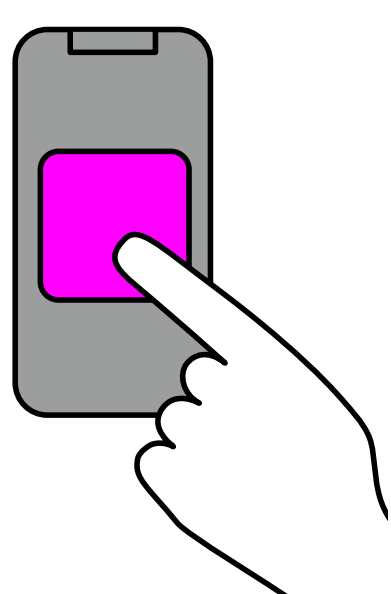
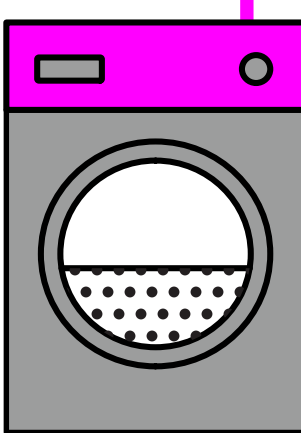


Energy out
1055 GWh



Demand

21 TWh run through network
(that's 21 billion washing machine cycles).
Peak demand time was 6:30pm on 12 August.



View in real-time

To view our data in real-time, please
download the NESO app for Apple or Android.
Or visit carbonintensity.org.uk