



# NESO

## National Electricity Transmission System Status report

NESO National Electricity Transmission System Status Report  
Monday 18 August 2025

Today's High Level Risk Status Forecast for the next 24h			
General Status		Voltage	
Demand		System Inertia	
System Margins		Weather	
Generation		Transmission	
Active Constraints			
<a href="#">System Warning</a>			

<a href="#">Today's Minimum De-Rated Margin</a>	5163 MW (SP 39)	
Current BMU Largest Loss Risk	Generation	1500 MW
	Demand	1150 MW

### Balancing Costs

Last 24 hours' BM spend      Total: £1611k



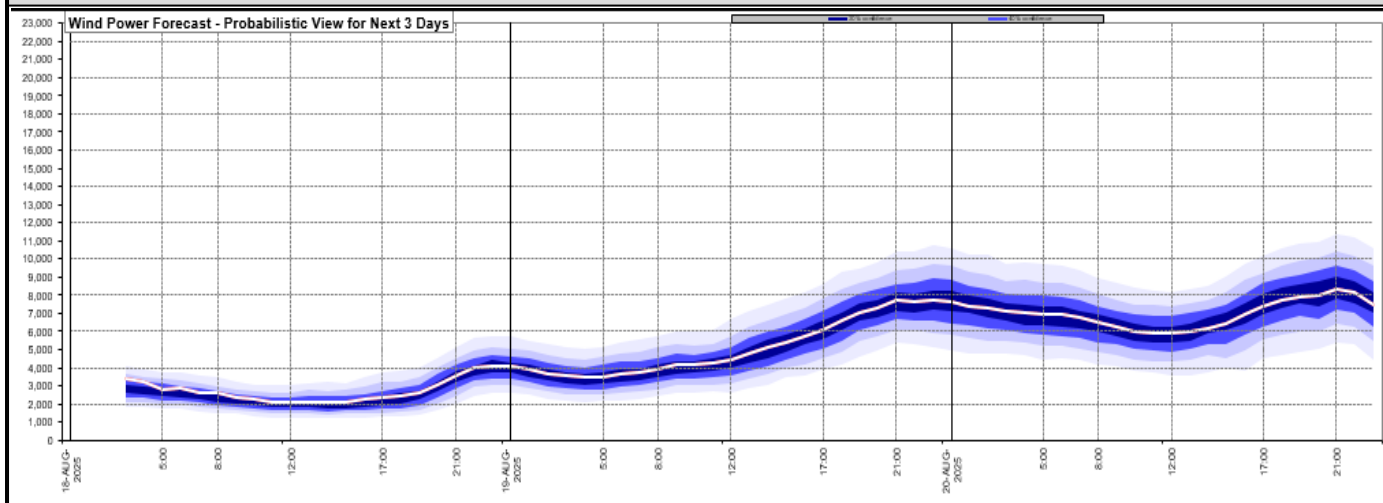
### Yesterday's Market Summary

<a href="#">Cash Out Price (Max)</a>	£120 / MWh (SP 45)
<a href="#">Cash Out Price (Min)</a>	£48 / MWh (SP 25)
<a href="#">Peak Demand Yesterday</a>	25,310 MW (SP 42)
<a href="#">Minimum Demand</a>	15,202 MW (SP28)

### Interconnector Net Transfer Capacity (MWs)

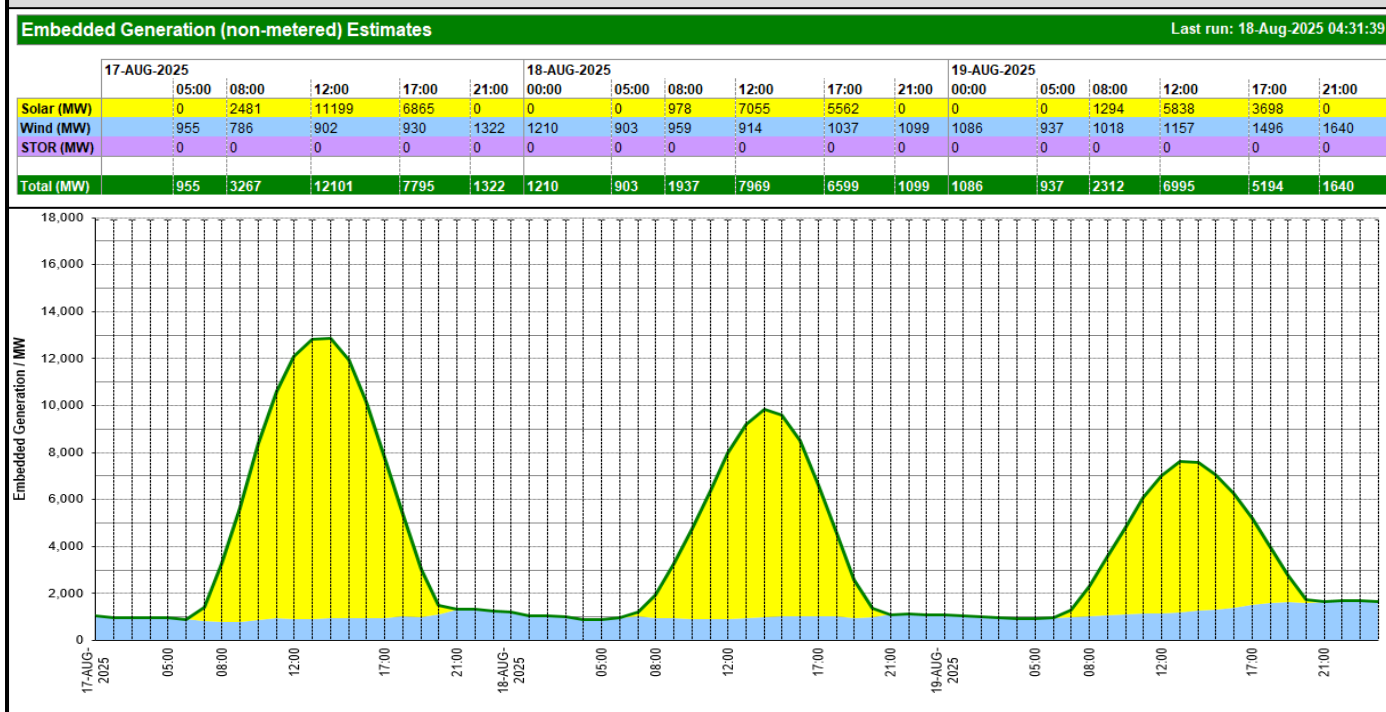
Today	Import	Export	Remarks
Netherlands (BritNed)	1000	1000	Fully Available
Belgium (Nemo)	1000	1000	Fully Available
Ireland (EWIC)	500	500	Fully Available
Northern Ireland (MOYLE)	500	500	Fully Available
Norway (NSL)	1400	1400	Fully Available
France (IFA2)	1000	1000	Fully Available
Ireland (GreenLink)	500	500	Fully Available
Viking Link	1400	1400	Fully Available
France (ElecLink)	1000	1000	Fully Available
France (IFA)	2000	2000	Fully Available

## Wind Power Forecast



## Expected embedded generation (MWs)

### Embedded Generation Forecast



Weather	Source	Commentary
Latest forecast (Summary)	<a href="#">Met Office</a> <a href="#">SEPA</a> <a href="#">Natural Resources Wales</a>	<b>Today:</b> A rather cloudy start across central and eastern areas but the cloud will slowly retreat back towards North Sea coasts. Sunny spells elsewhere, although some showers affecting the far southwest. Warm in the sunshine, but rather cool along eastern coasts. <b>Tonight:</b> A few showers continuing to affect the southwest overnight, perhaps turning thundery at times. Otherwise North Sea cloud probably expanding back inland, with a little drizzle in places.
General Weather Concerns e.g. wind, rain, snow, flooding, GB Weather Warnings	<a href="#">Met Office</a> <a href="#">Weather Warnings</a> <a href="#">SEPA</a> <a href="#">Natural Resources Wales</a>	<b>UK Weather Warnings</b> No weather warnings are in force for the UK  <b>Flood Warnings</b> 0 flood warning and 0 floods alert issued for England.  0 flood warning and 0 flood alerts issued for Scotland.  0 flood warnings and 0 flood alerts issued for Wales.

Further Information	
BM Reports	<a href="https://www.elexon.co.uk/data/kinnect-insights-solution/">https://www.elexon.co.uk/data/kinnect-insights-solution/</a>
System Balancing Reports	<a href="https://www.neso.energy/industry-information/industry-data-and-reports/system-balancing-reports">https://www.neso.energy/industry-information/industry-data-and-reports/system-balancing-reports</a>
Forecast Volumes and Costs	<a href="https://www.neso.energy/industry-information/industry-data-and-reports/forecast-volumes-and-costs">https://www.neso.energy/industry-information/industry-data-and-reports/forecast-volumes-and-costs</a>