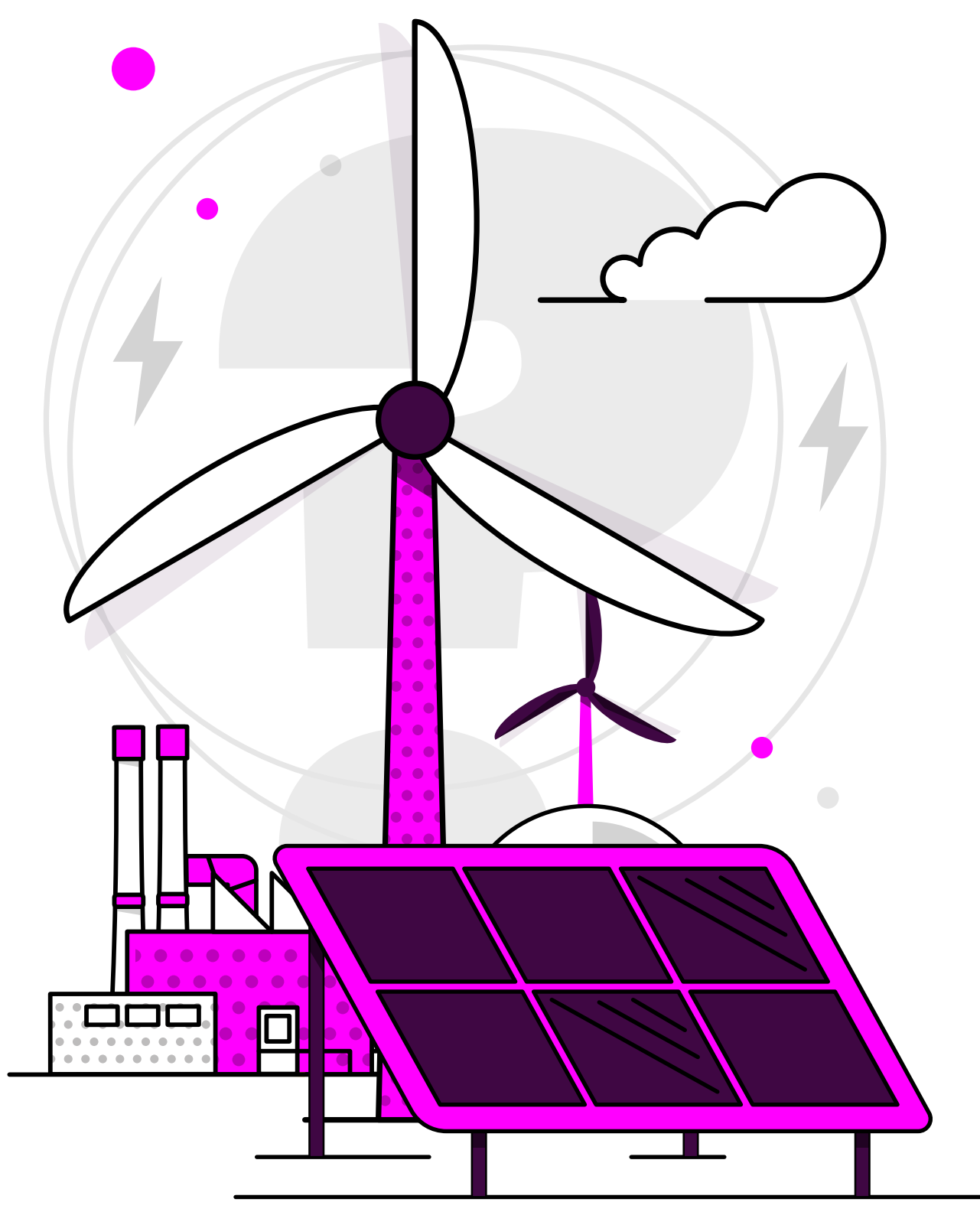




Britain's Energy Explained: July 2025

How was our electricity generated?

change from previous month



Gas	24.9%	7.2%	▲
Wind	19.1%	12.2%	▼
Nuclear	14.7%	0.1%	▲
Biomass	8.2%	1.4%	▲
Solar	10.7%	1.2%	▼
Imports	19.5%	4.7%	▲
Hydro	1.1%	0.1%	▲
Storage	1.7%	0.2%	▼

Where has our gas come from?*

Entry Points

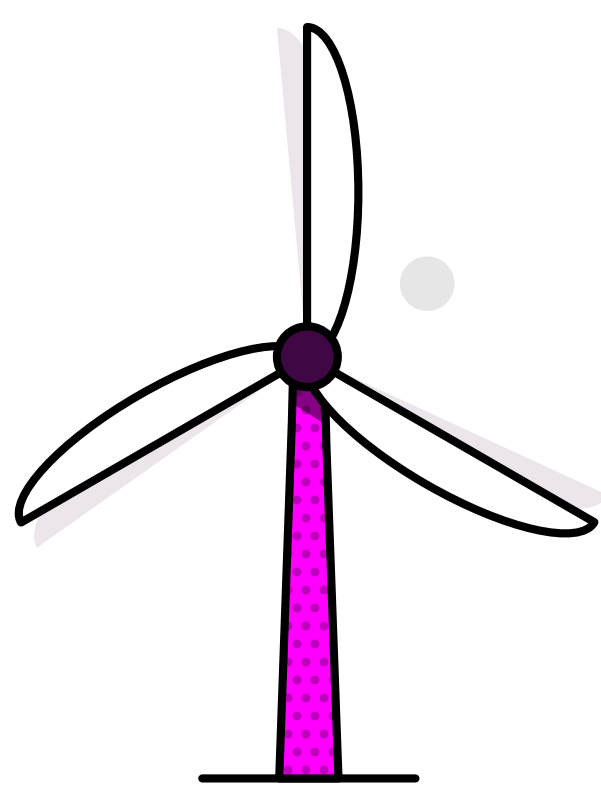
change from previous month

UK/Norwegian gas fields	91%	4%	▲
LNG imports	4%	1%	▼
European imports	0%	0%	–
Storage withdrawal	5%	3%	▼

Where is our gas used?

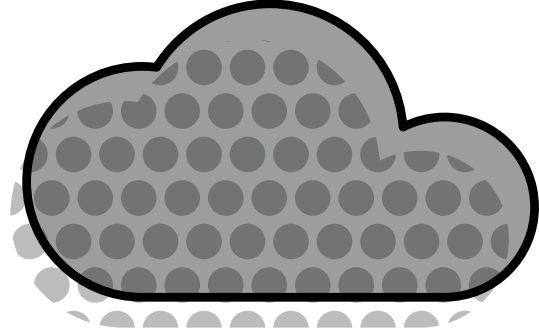
Distribution networks	27%	10%	▼
Power stations	19%	2%	▲
EU & Ireland exports	43%	3%	▲
Industrial	2%	0%	–
Storage	9%	5%	▲

Carbon intensity of electricity



Zero carbon

48% of electricity came from zero carbon sources
84% peak zero carbon share

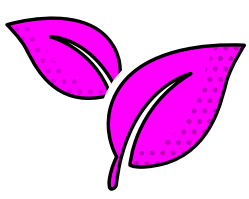


Carbon intensity

129 gCO₂/kWh average

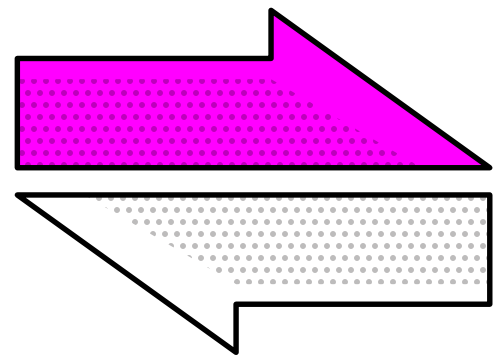


Greenest time of the month 1:30pm on 4 July



Lowest carbon intensity 33 gCO₂/kWh

How much electricity we used



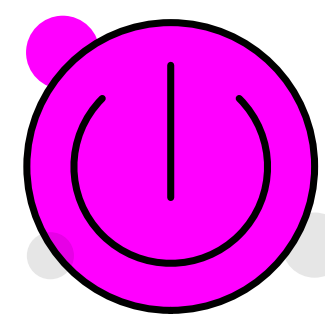
Imports & exports



Energy in
4,281 GWh

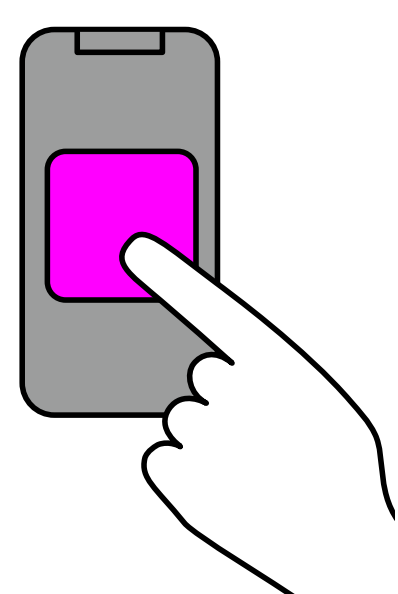
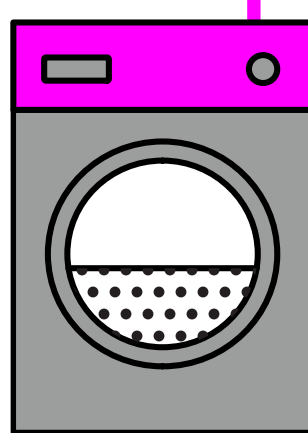


Energy out
929 GWh



Demand

22 TWh run through network (that's 22 billion washing machine cycles).
Peak demand time was 6pm on 17 July.



View in real-time

To view our data in real-time, please download the NESO app for Apple or Android.
Or visit carbonintensity.org.uk