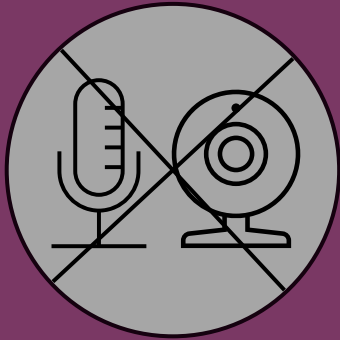


Public

NESO Regional Energy Strategic Planning Forum

June – July 2025

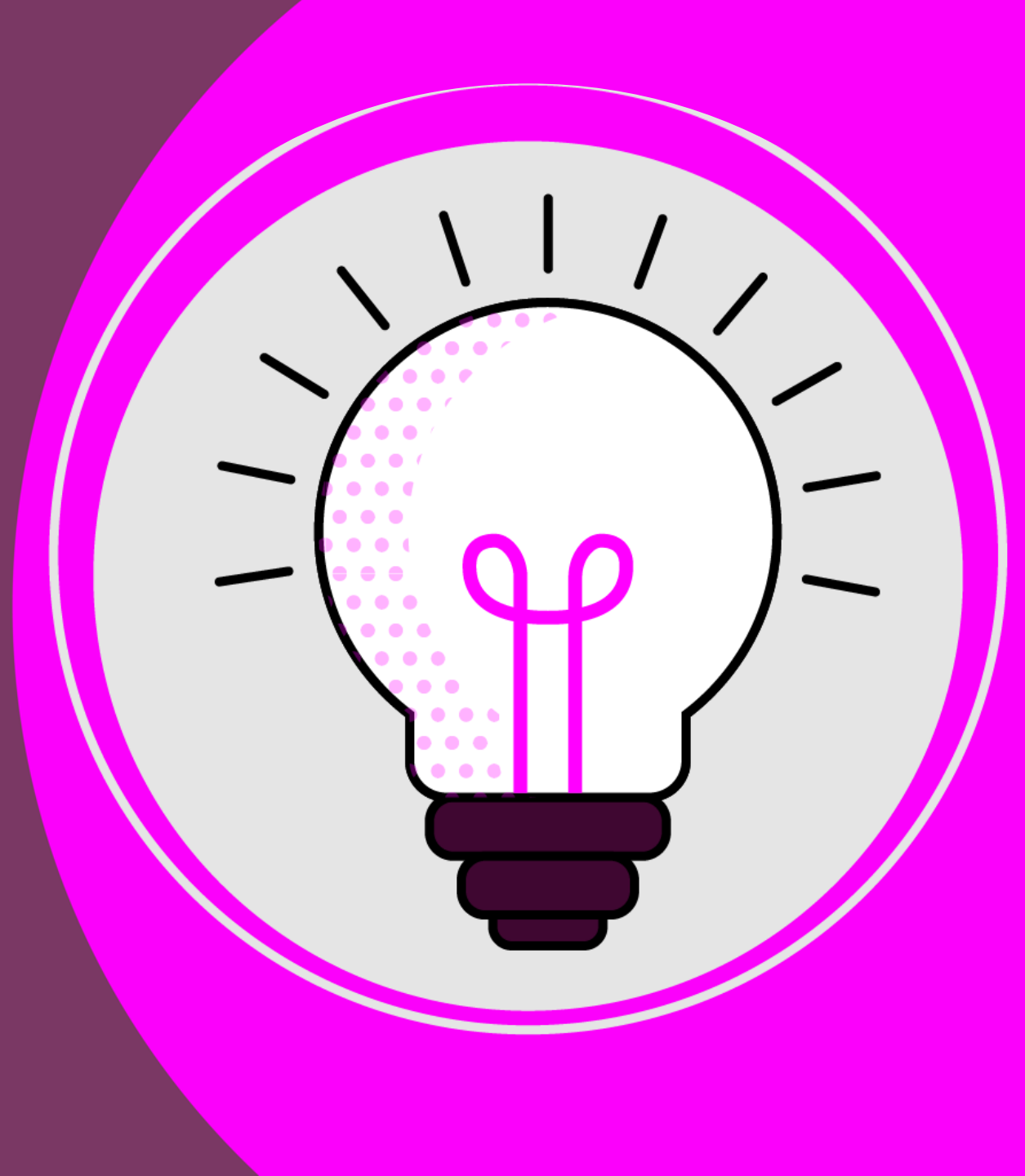
Housekeeping



Transparency Statement

- Attendee lists will not be shared externally
- All questions, comments and reactions through the Q&A tool will be treated as anonymous unless you choose to share your details
- We will share the slides and a write-up following the Forum. The write-up will cover all 11 RESP Forums

Our Transparency Statement for tRESP related projects can be found here:
<https://www.neso.energy/document/360256/download>



Agenda

1. Welcome and Introduction
2. tRESP update
 - Regional Context
 - Strategic Investment
 - Pathways and Consistent Planning Assumptions (CPAs)
3. Updates on wider RESP activity
4. Q&A
5. Next Steps & Close

1. Welcome

Summary of the First Forums

The first RESP Forums took place between March – April 2025:

Content covered:

- Overview of NESO, SEP & RESP
- Introduction to tRESP
- Deep dives into tRESP Pathways and Strategic Investment

1,263

attendees in
total

854

attendees interacted
through
Q&A and polls

7.48

Satisfaction
score

Forum write up and FAQs available online at:

<https://www.neso.energy/what-we-do/strategic-planning/regional-energy-strategic-planning-resp>



Glossary

- **RESP – Regional Energy Strategic Planning.** NESO is responsible for producing regional plans for England, Scotland and Wales, to help ensure local areas get the energy infrastructure they need.
- **DNOs** – Distribution Network Operators. Local electricity Distribution operators.
- **tRESP – Transitional Regional Energy Strategic Planning.** TRESP is a transitional bridge to the 'Enduring' RESP'. tRESP focuses on supporting electricity DNO business plans and will provide each region with a single short-term pathway.
- **Pathways** – The different routes to achieving our plans and objectives.
- **Methodology** – The RESP Methodology will set out how RESPs will be produced and what they will contain.
- **SEP – Strategic Energy Planning.** NESO is responsible for strategic planning and coordination of GB's energy network, on both a national and local level, to support the energy needs of the nations, communities and consumers.
- **SSEP – Strategic Spatial Energy Planning.** SSEP is assessing the locations, quantities and types of energy infrastructure required for future energy demand by creating a GB-wide map and plan.

RESP: An Overview

The RESP will comprise of a set of outputs developed through place-based engagement, with transparent Governance, underpinned by our local actor support and technical coordination functions.

The Regional Energy Strategic Plan

1 Regional Context



2 Regional Energy Pathways & Consistent Planning Assumptions



3 Strategic Investment Needs



4 Spatial Network Needs



Transitional RESP (tRESP)

Our transitional Regional Energy Plans will be our first RESP deliverable to support the upcoming DNO price control.



RESP Governance

We will establish a National Steering Committee with Strategic Boards to approve RESPs. Regional working Groups will provide input and oversight of the RESP development.

Place-based engagement

Together with an embedded RESP team, we will develop structured, transparent and accessible routes for stakeholder engagement



In-development Register

We will deliver a register of early-stage projects

Local Actor Support

We will develop proportionate forms of support for local authorities and local energy representatives



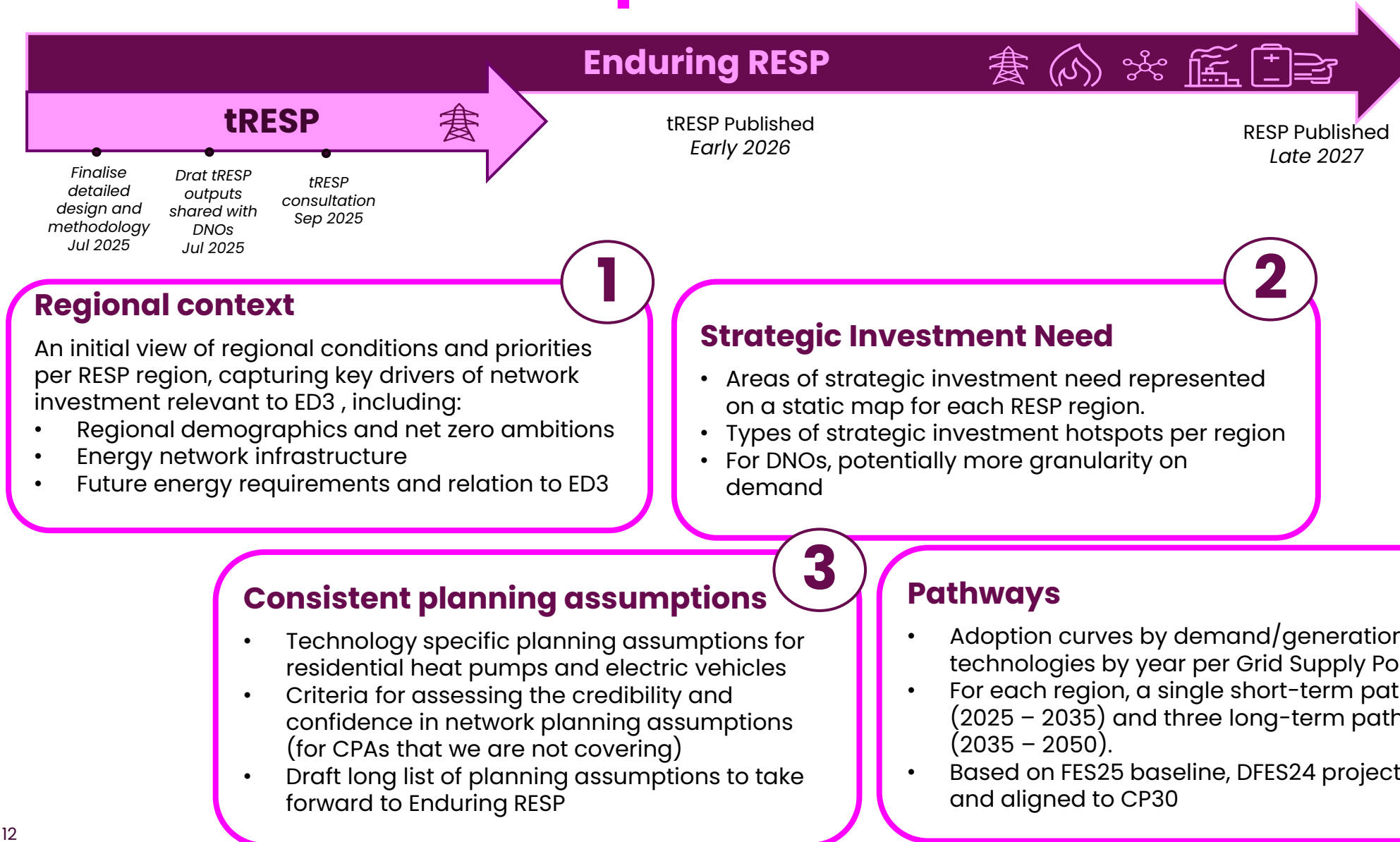
Technical Coordination

We will ensure coherence of plans within and across RESP regions and national, identify cross-vector optimisation opportunities and carry out a targeted review of network plans to ensure alignment with RESP's direction.



2. tRESP Update

Overall tRESP outputs

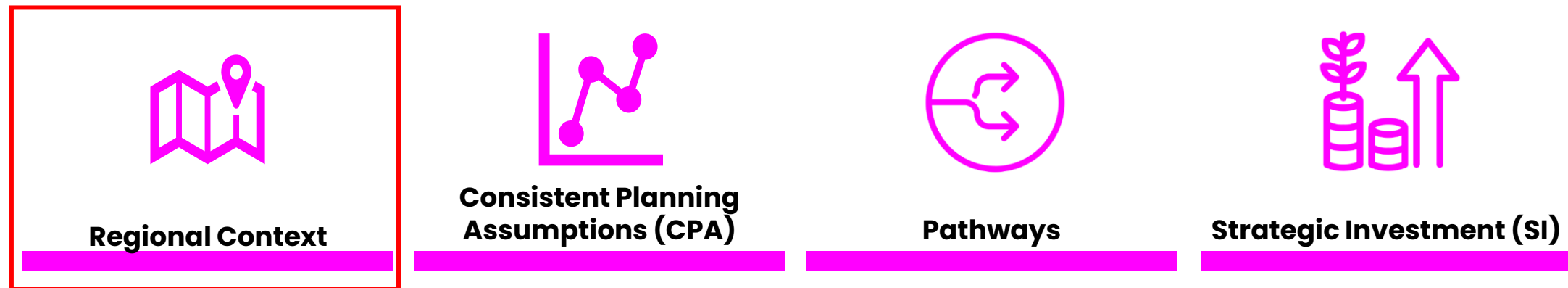


Regional Context

Please contact your Region/
Nation if you want to see your
Regional Context Data

What is Regional Context?

The tRESP Regional Context output will deliver a view of regional conditions and priorities, including key challenges and opportunities within a nation/region, presenting the resultant implications for strategic energy planning in the area.

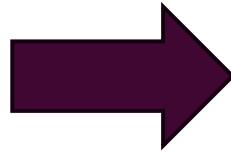
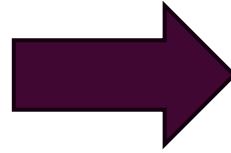
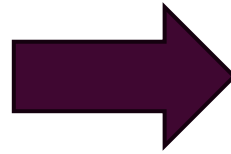
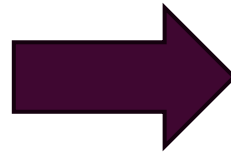


- Provides a view of **regional conditions** and **priorities**
- Draws on embedded regional **engagement** and **relevant datasets**
- **Reflects**, rather than supersedes
- Provides **background information** into key elements of the region that are publicly available from national sources
- Is developed alongside **pathways** and **strategic investment** need

tRESP to Enduring

tRESP

- An initial view of regional conditions and priorities capturing **key drivers** of network investment relevant to ED3
- Looking at national level **public data sets** that can be **interrogated to a regional level**
- Qualitative **regional insights, engagement** in RESP forums and bi-laterals over summer
- A **single document** per region in the September consultation



Enduring

- Broader and deeper
- Additional regional data sets provided by local actors
- Builds on tRESP through structured engagement
- More integrated with other products
- Geospatial interactive tool

Strategic Investment

Transitional RESP Scope



SI Need Framework

Updated thinking of the core components of 'Strategic Value' and 'Uncertainty'

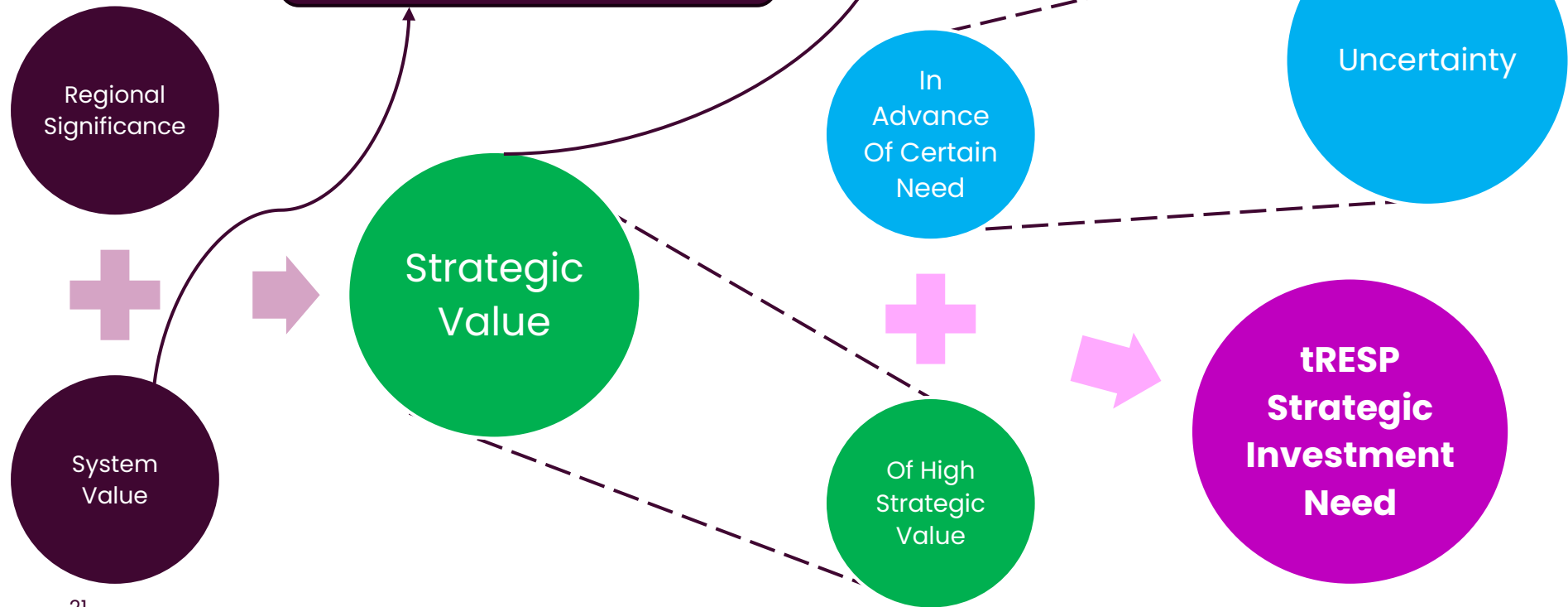


Figure 1: Indicative categorisation of areas of SI need by uncertainty and strategic value

Higher	Group 1 In scope (direction-setting) eg, high-voltage investment to enable industrial decarbonisation	Group 3 In scope (direction setting) eg, programme of investment to enable capacity for heat demand
Strategic value	Group 0 Out of scope eg, secondary network investments tracking demand	Group 2 In scope (informative) eg, secondary network investments dependent on other vectors
Lower	Lower	Higher

- Consenting Status
- +
- Policy Stability
- +
- Technology Maturity
- +
- Funding Status

Why We Need Your Help

To assess where SI Need is required across the networks within RESP areas, we need to first **understand the direction of regional economic growth and development** priorities within our RESP areas.

By working closely with local stakeholders and DNOs and building on existing information sharing, we are looking to develop a comprehensive view of the pipeline.

RFI Process (Request For Information)

We're inviting you to complete an RFI to understand where your key growth and development areas are (i.e. projects, programmes, initiatives), to enable us to assess and understand SI needs across the energy networks within your region.

[Request for information – Strategic Investment for regional energy planning | National Energy System Operator](#)

The RFI process has been developed to enable NESO to:

1. Engage a range of stakeholders
2. Screen whether an Energy need requires evaluation
3. Assess whether this need is 'In or Out of Scope.'

What are we considering for assessment?

1. Supply and demand (noting supply is subject to connections reform).
2. Projects intended for connection prior to 2040.

Pathways and CPAs (Consistent Planning Assumptions)

Pathways and Consistent Planning Assumptions



Drive consistency



Being Pragmatic



Drive Value



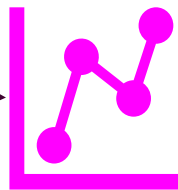
Greater confidence

CPAs are a standard set of assumptions that guide DNOs in applying tRESP pathways consistently for low carbon technologies, informed by existing DNO/GDN planning practices and focus on factors impacting investment.

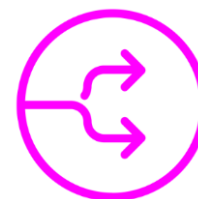
The pathways provide the scale of low-carbon technologies expected in the short- and the long-term



Regional Context



Consistent Planning Assumptions (CPA)



Pathways



Strategic Investment (SI)

What to expect from tRESP pathways?

Building blocks being covered in pathways

Demand building blocks

Residential HP

I&C HP

EVs

EV chargers

Air conditioning

Residential District heating

Generation building blocks

Solar PV (Small and large)

Wind (Onshore)

Storage

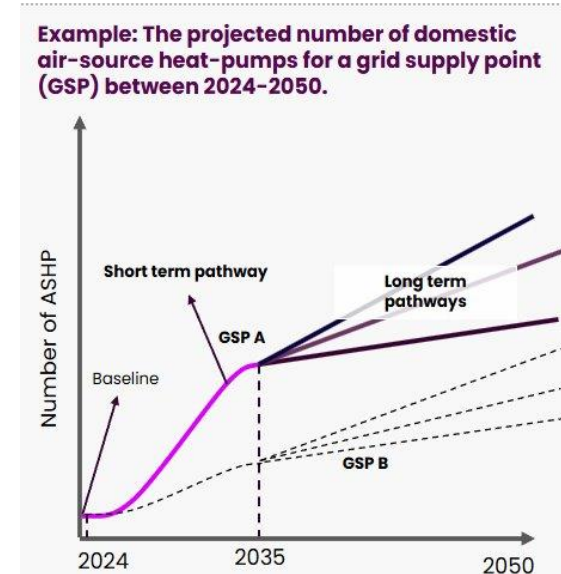
Power plants (incl. CHP)

Hydro

Geothermal

Hydrogen/Fuel cells

Example output



For a defined list of tRESP Building Blocks, pathways consist of the following by GSP produced by NESO:

- A baseline of current values (2024), derived consistently from FES25
 - A single short-term pathway (2025-2035), derived from combining the latest DNO DFES with the tRESP baseline from FES25
 - Three long-term pathways (2035-2050) derived from FES / DFES
- Short-term pathways will be validated through an alignment review framework covering
- a) Rationale for EV/heat GSP trends from DFES data
 - b) CP2030 alignment
 - c) carbon budget/ FES25 alignment.

The initial version of the pathways will then be adjusted as required.

What's next on tRESP?



What to expect in Consultation?

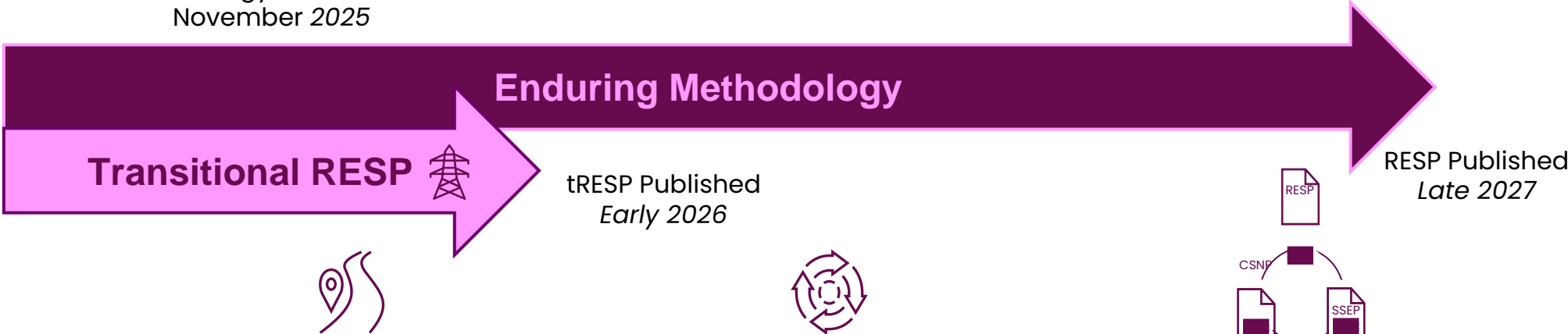
- Issued on neso.energy
- A document per region supported by data tables and visualisation across outputs
- List of questions we would like to hear your thoughts on

3. Updates on wider RESP Activities

3.1 Methodology

What is Enduring Methodology?

Methodology Consultation
November 2025



What is the Methodology?

The methodology will set out **our approach for delivering the first Regional Energy Strategic Plans**, which will be produced in late 2027.

This will **cover the whole RESP end-to-end process** and the individual outputs which form part of RESP, as set out in [Ofgem's July 2024 consultation](#).

The methodology will follow a **similar format to other NESO methodologies** such as the [Strategic Spatial Energy Plan](#).

What will be its key functions?

The methodology will set out how RESP will support **coordination between key stakeholders**, including networks and government

We will support the **implementation of the energy transition**, working with local actors and providing practical guidance

We will provide **regionally tailored Pathways: plans** based on both **top-down and bottom-up forecasting**, to support investment planning

RESP: An Overview

The RESP will comprise of a set of outputs developed through place-based engagement, with transparent Governance, underpinned by our local actor support and technical coordination functions.

The Regional Energy Strategic Plan

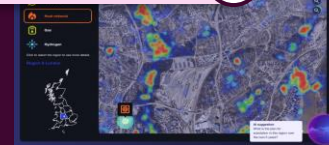
1 Regional Context



2 Regional Energy Pathways & Consistent Planning Assumptions



3 Strategic Investment Needs



4 Spatial Network Needs

Transitional RESP (tRESP)

Our transitional Regional Energy Plans will be our first RESP deliverable to support the upcoming DNO price control.



RESP Governance

We will establish a National Steering Committee with Strategic Boards to approve RESPs. Regional working Groups will provide input and oversight of the RESP development.

Place-based engagement

Together with an embedded RESP team, we will develop structured, transparent and accessible routes for stakeholder engagement



In-development Register

We will deliver a register of early-stage projects

Local Actor Support

We will develop proportionate forms of support for local authorities and local energy representatives



Technical Coordination

We will ensure coherence of plans within and across RESP regions and national, identify cross-vector optimisation opportunities and carry out a targeted review of network plans to ensure alignment with RESP's direction.



3.2 Local Actor Support

Local Actor Support Overview

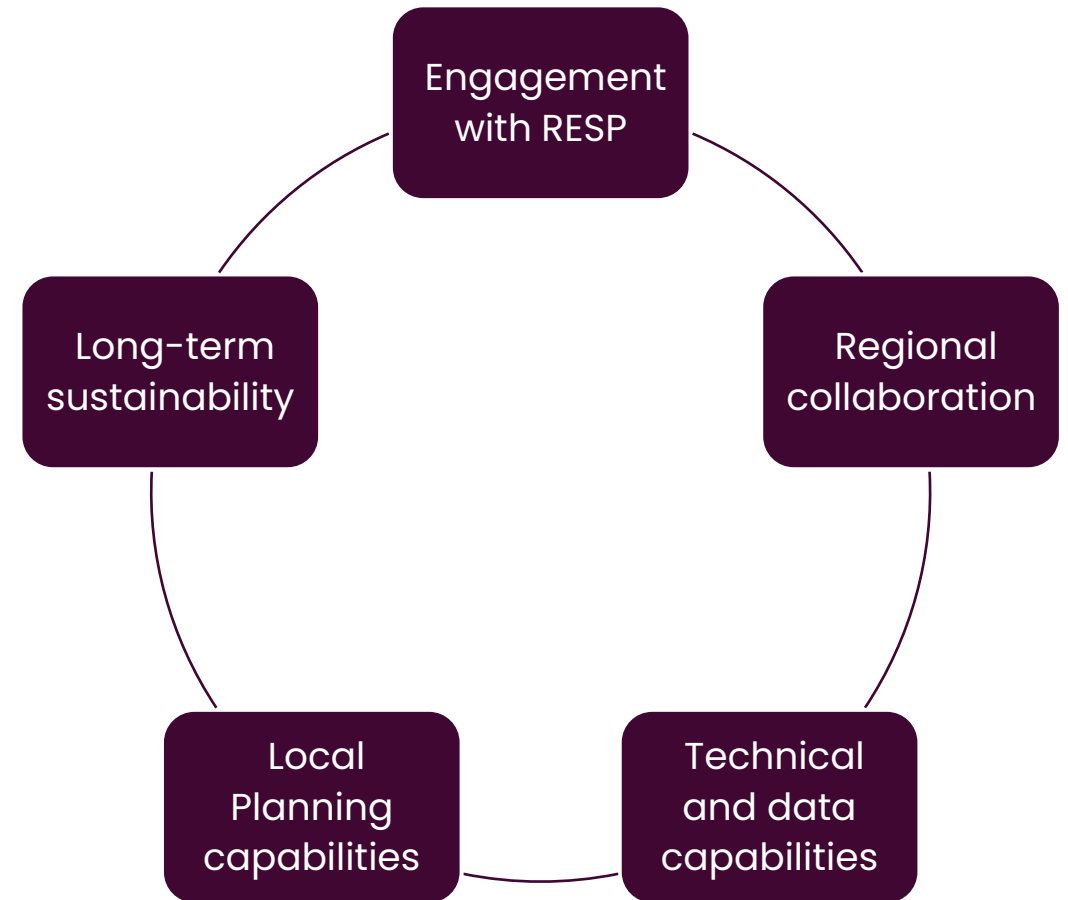


Local Actor Support Objectives

A Local Actor is an entity that is involved, has influence or has interest in the energy landscape of a RESP region or nation.

We will enable **collaboration**, **coordination** and **representation** by working to increase Local Actors' capabilities to input into RESP by providing proportionate support aligned to their influence on RESP and their unmet support needs.

Some who are vital for the successful delivery of RESP will require support – our objectives (right) are designed to target this; and we are exploring support needs across GB to develop our thinking...



Local Actor Support Areas

We are having in-depth conversations with a diverse range of Local Actors to explore potential support options around the following topics:

Pain Points

Enablers

Technical
needs

Effective
collaboration

Training
needs

We also want to hear from you all – please open Menti and submit your suggestions on the following questions:

1. What **hinders** you from getting involved or doing more in energy planning activity?
2. What **helps** you have greater involvement in energy planning?
3. What could NESO **provide** to help your organisation engage in RESP and energy planning even further?

5. Next Steps & Close

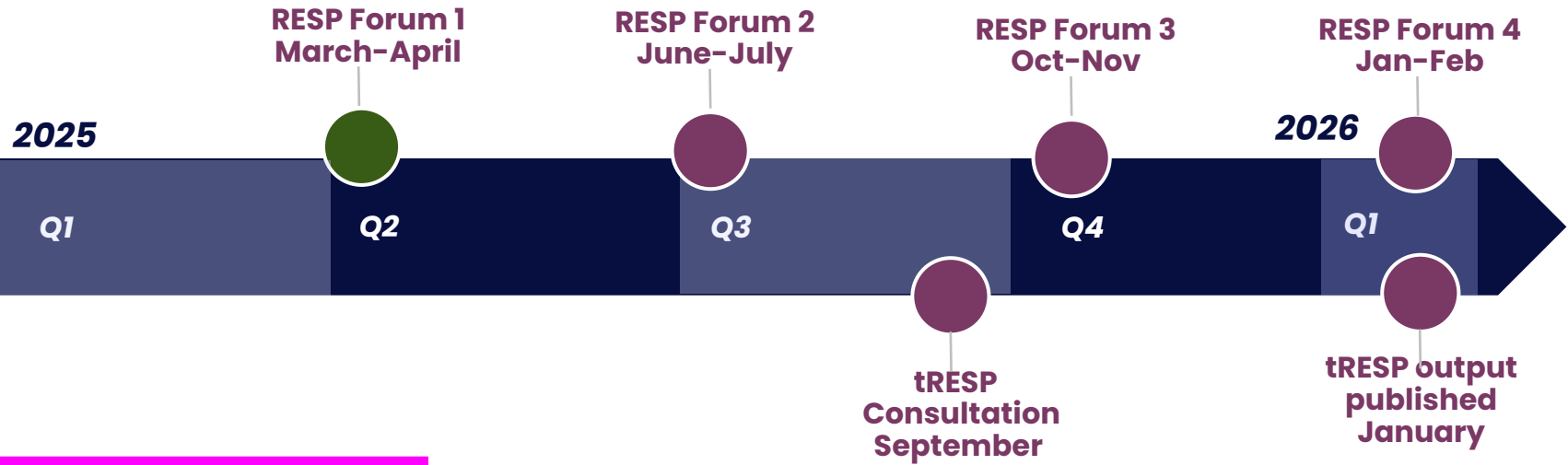
• • •

• •

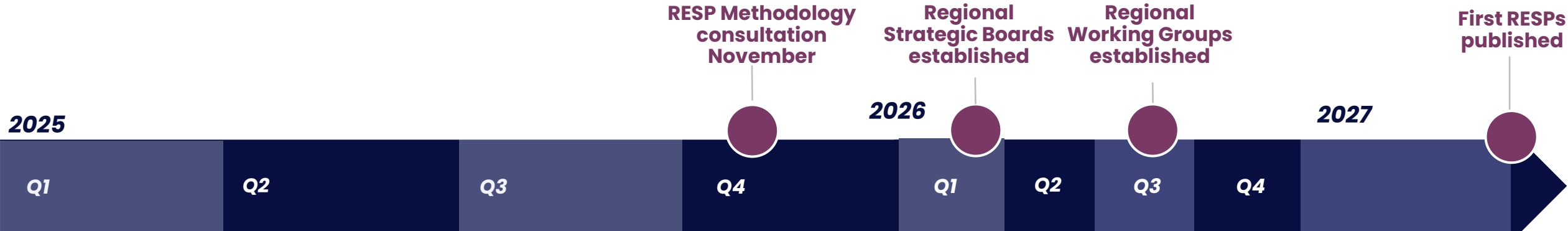
• •

How to get involved

Transitional RESP



Enduring RESP



Further information on RESP



Look out for future Forum dates
neso.energy/news-and-events/calendar



Newsletter sign up
neso.energy/news-and-events



RESP web pages
neso.energy/what-we-do/strategic-planning/regional-energy-strategic-planning-resp



Contact the RESP team
box.resp@neso.energy

Thank you

NESO

<https://www.neso.energy/what-we-do>

Strategic Energy Planning

<https://www.neso.energy/what-we-do/strategic-planning>

RESP

<https://www.neso.energy/what-we-do/strategic-planning/regional-energy-strategic-planning-resp>

Contact:

box.RESP@neso.energy