

Date:

Monday 30 Jun 2025

BSUoS Final Tariff: £10.74/MWh

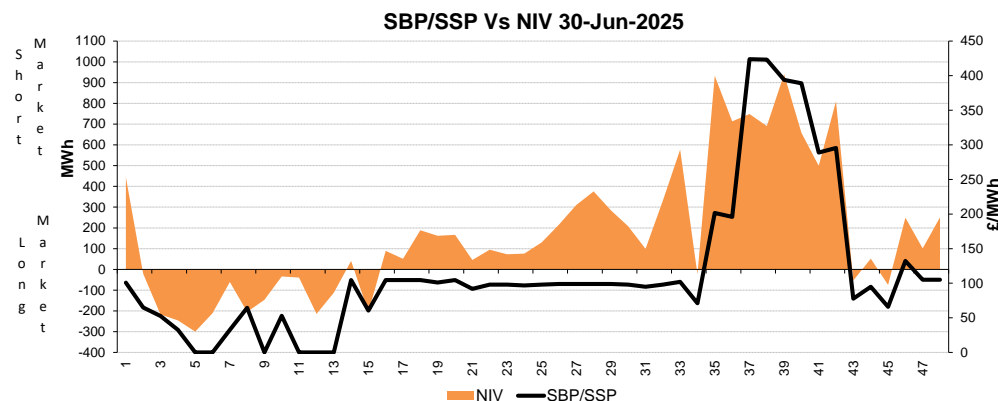
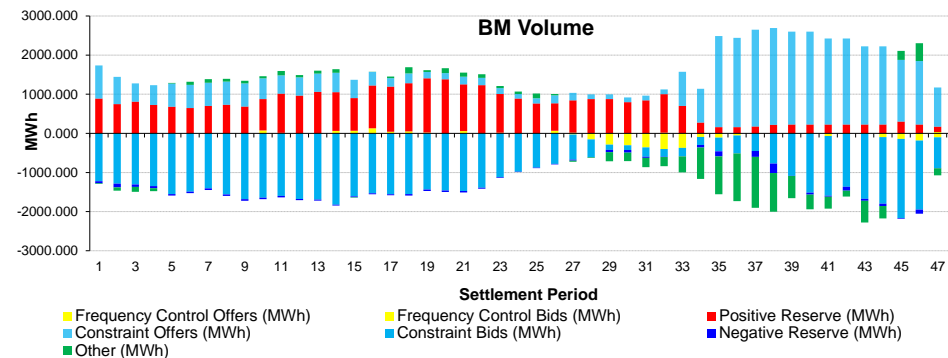
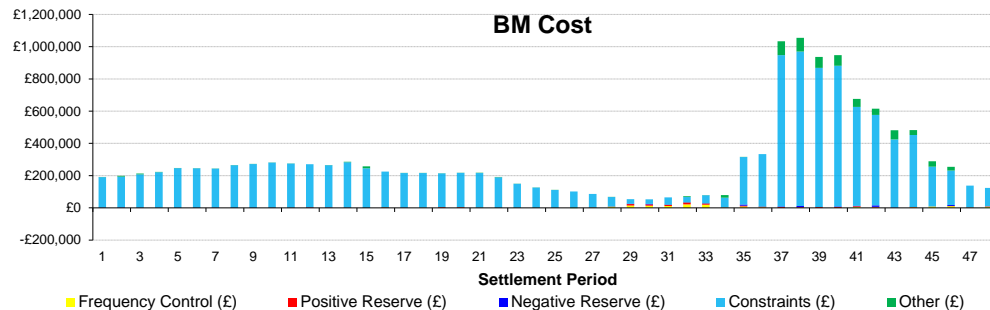
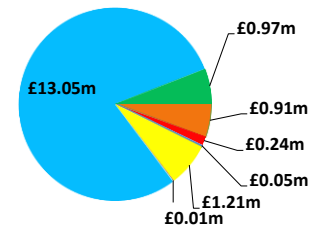
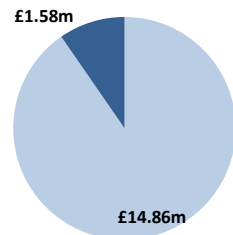
Total Outturn: £16.45m

# Daily Balancing Costs



BM Cost (Indicative)

AS Cost (Estimate)



## Commentary

The market alternated between long and short throughout the day, with some very pronounced short periods. Trades were required for Margin. BM Actions helped manage thermal constraints in England and Scotland throughout the day. BM Actions supported Voltage Control. A high volume of trades were taken to help meet demand and reserve requirements during a period where the system was very constrained.

Public