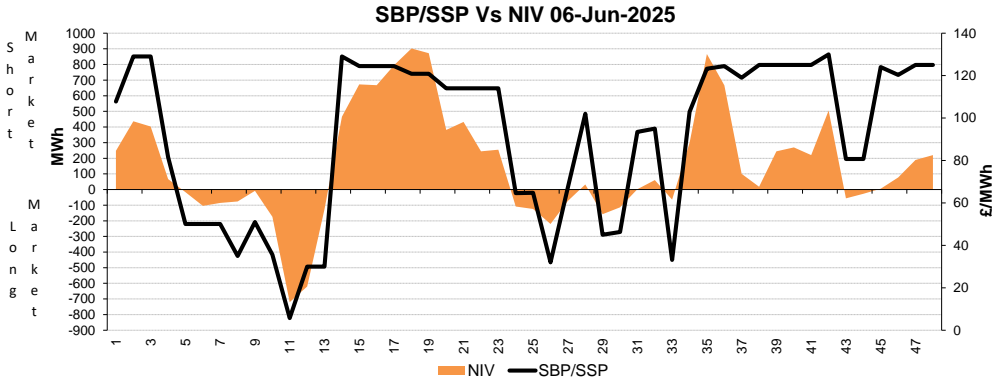
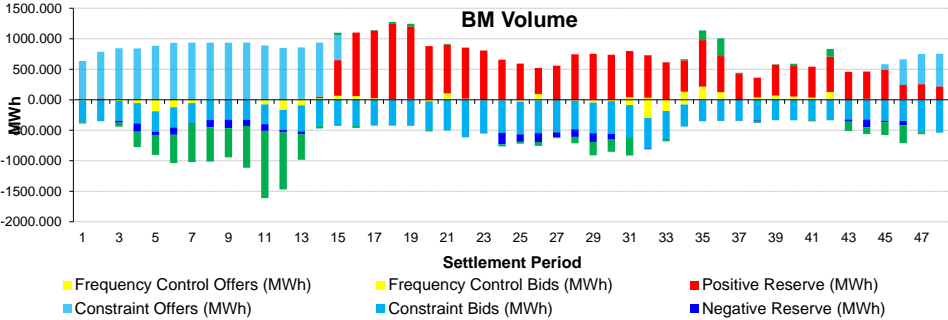
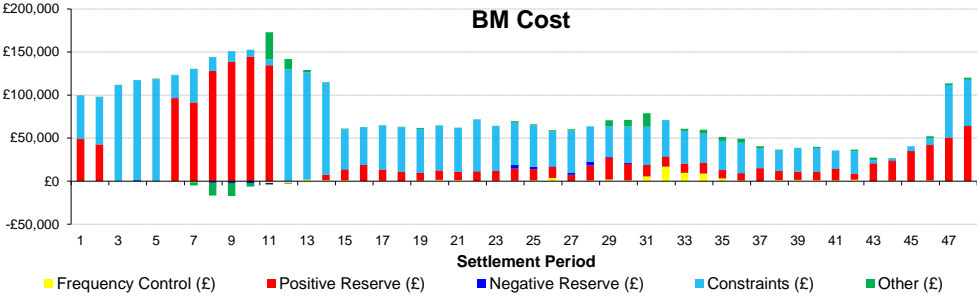
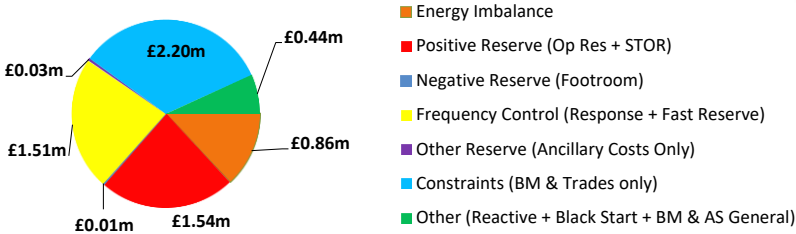
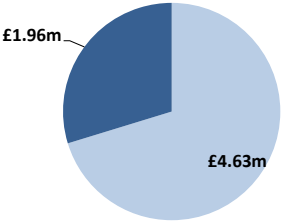


Daily Balancing Costs



BM Cost (Indicative)

AS Cost (Estimate)



Commentary

The market alternated between long and short throughout the day. Trades were required for Downward Regulation. Trades and BM Actions were required to manage thermal constraints in South of England throughout the day. Trades and BM Actions supported Voltage Control and further BM Actions supported System Inertia.