

# Connections reform evidence submission: common stumbling blocks

3<sup>rd</sup> July 2025





# Learning the lessons from DNO evidence gathering



## Don't hurry

It will take longer than you think.

Reading the handbook so you know exactly what evidence you need to provide.

Gathering those evidence documents and double checking them.

**Set time aside for:**

Checking you have access to the NESO connections portal, or your DNOs platform.

Carefully inputting the data. DNOs have seen too many customers skipping mandatory fields.

## Check how/where you need to submit evidence first

If your project is directly connected to the transmission system or are you a large BEGA or BELLA

You will submit directly to NESO via the [connections portal](#)



If your project is connected to the distribution system and is classified under CUSC as small or medium

You will submit directly to your DNO and each DNO has a different submission approach

Find out more on ENA website: [Connections reforms - evidence submission – Energy Networks Association \(ENA\)](#)



## Land matters are the biggest stumbling block



Original Red Line Boundaries are a new concept. Read the examples and guidance in the handbook carefully. Also listen back to the NESO webinar from 26th June as we cover this matter in more detail.

We are seeing customers not stating the Installed capacity of the technology on the ORLB or that the land area stated in the Option agreement provided doesn't match the ORLB provided.

Also take great care to provide data exactly as requested. DNO's have seen ORLB coordinates to 6 decimal places instead of the 3 required. 3 decimal places have been consulted on and agreed.



The planning route: The planning route is reserved for those with DCO Planning. Some customers are submitting town and country/council planning. This causes immediate fail on initial checks so take care – follow the flow diagram in the handbook carefully.

However, the town and country/council planning route still needed if you are seeking protection in addition to land requirement

## Secured Land rights - Option Agreements



If submitting an Option Agreement to evidence land rights (Part 3A), the associated form of lease or transfer of ownership must also be submitted



From the readiness declaration: *“Option Agreement must be accompanied by a form of Lease or Purchase Agreement, (also known as a Transfer) and the form of Lease must have a minimum 20-year period from the date of exercise of the option unless acceptable evidence is provided by the User/Applicant - See section 1C.”*

## Land rights held by another party

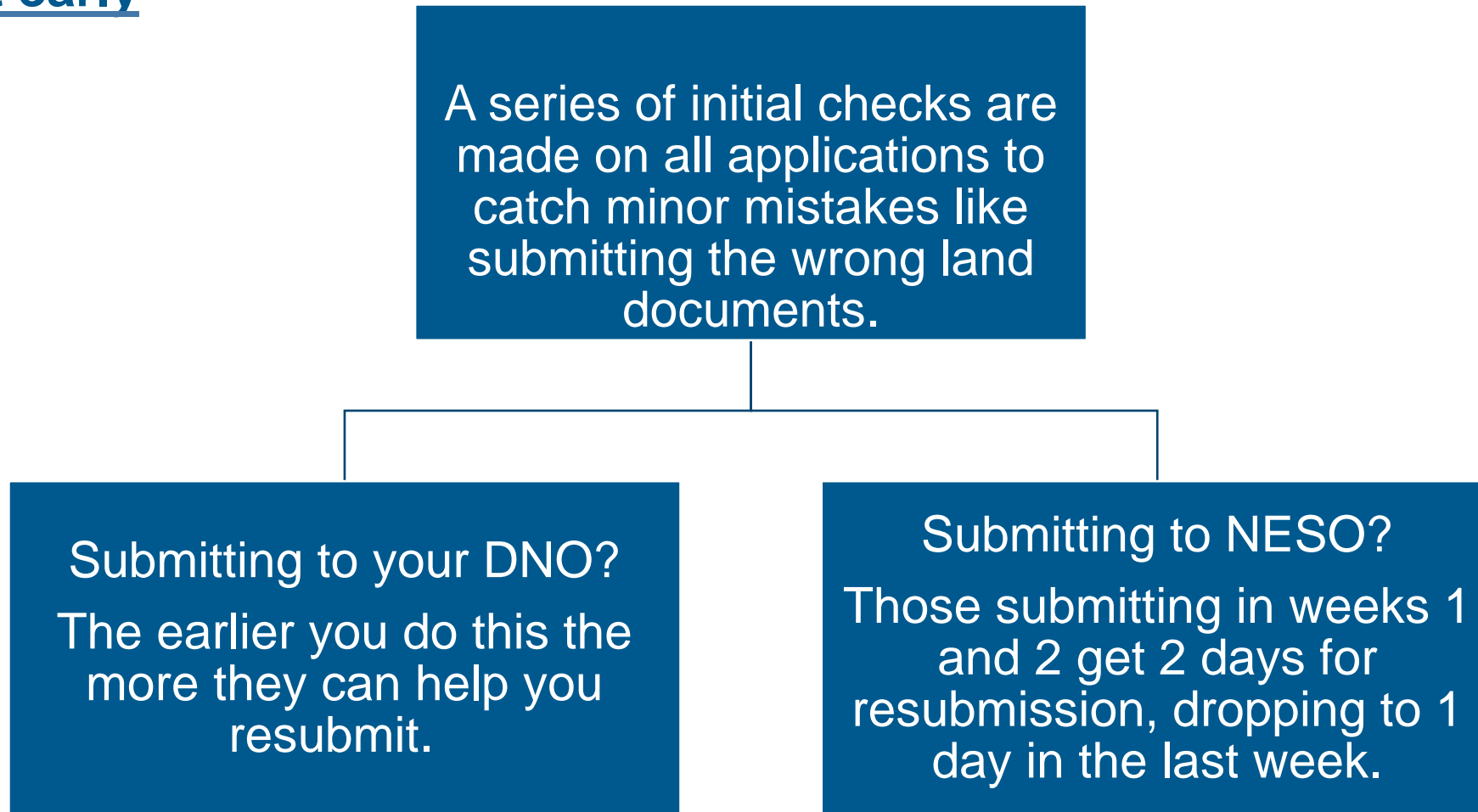
---

**If land rights are held by a party other than the applicant, a letter must also be submitted explaining the relationship between the two parties**

---

*e.g. novation, SPV, group companies etc. please also make this clear in the readiness declaration form/portal.*

## Submit early





## Quick fire tips



All password-protections must be removed from files before submission



A set of site coordinates must be provided per project stage



A site acreage value must be provided per project stage



You must provide both your Option Agreement and Form of Lease. These may be uploaded as one document.



Minimum acreage for hybrid: Check LoA guidance for calculation

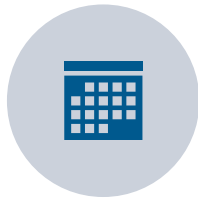


The submission deadline for G2WQ evidence is 29<sup>th</sup> July 2025 23:59

## Quick fire tips



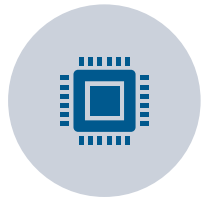
Table numbers in the Evidence Submission Handbook are not related to numbering referenced in other guidance documents



Requests for advancement must be at least 12 months in advance of the current connection date, and deliverable



Customers with connection dates after 2035 must request advancement in order to receive a Gate 2 offer (this includes if you have a non firm date before 2035 and firm date post 2035)



Installed capacity: This should reflect your latest design.



Jurisdiction: This is the jurisdiction you have already submitted or will submit planning to

Thank you