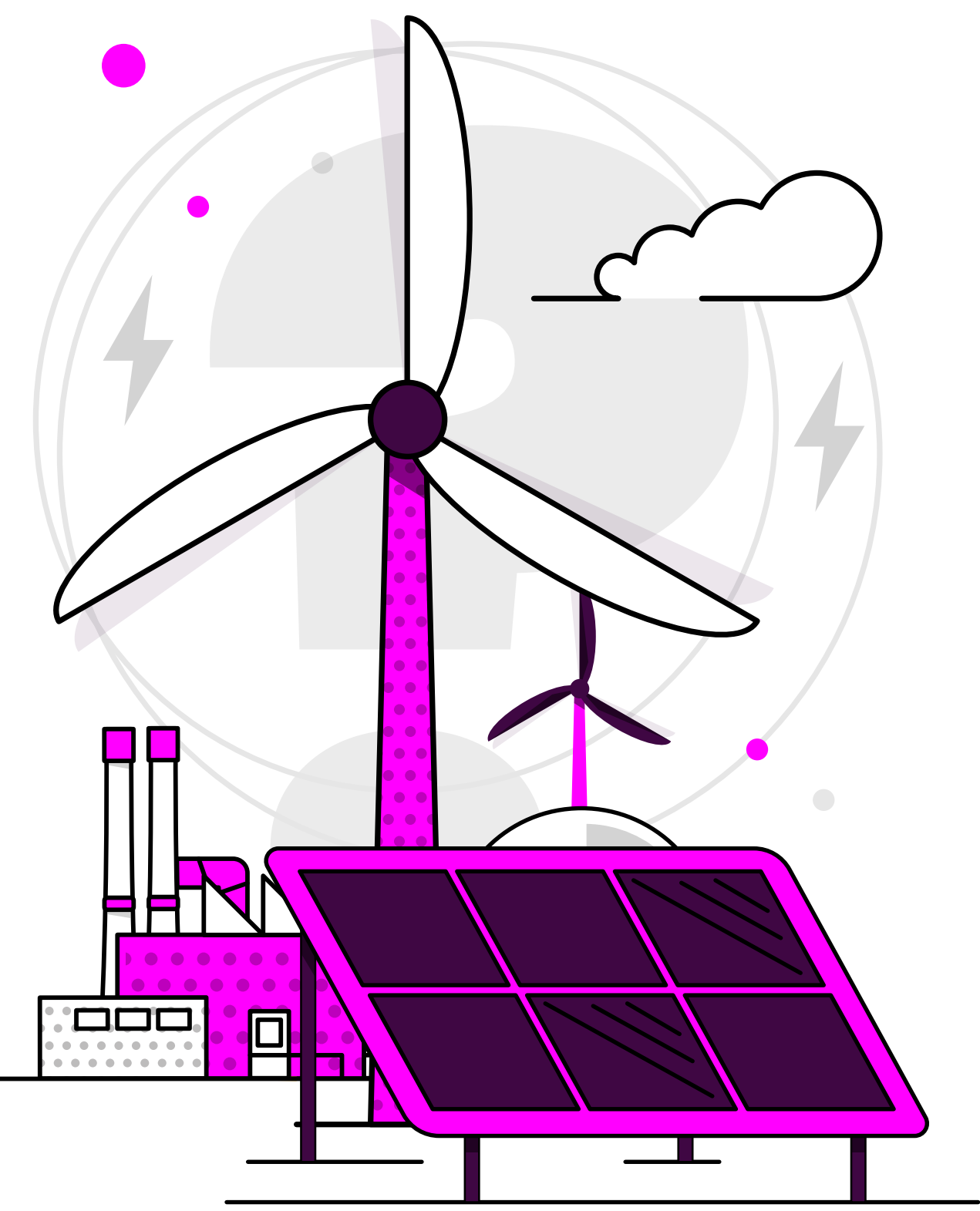


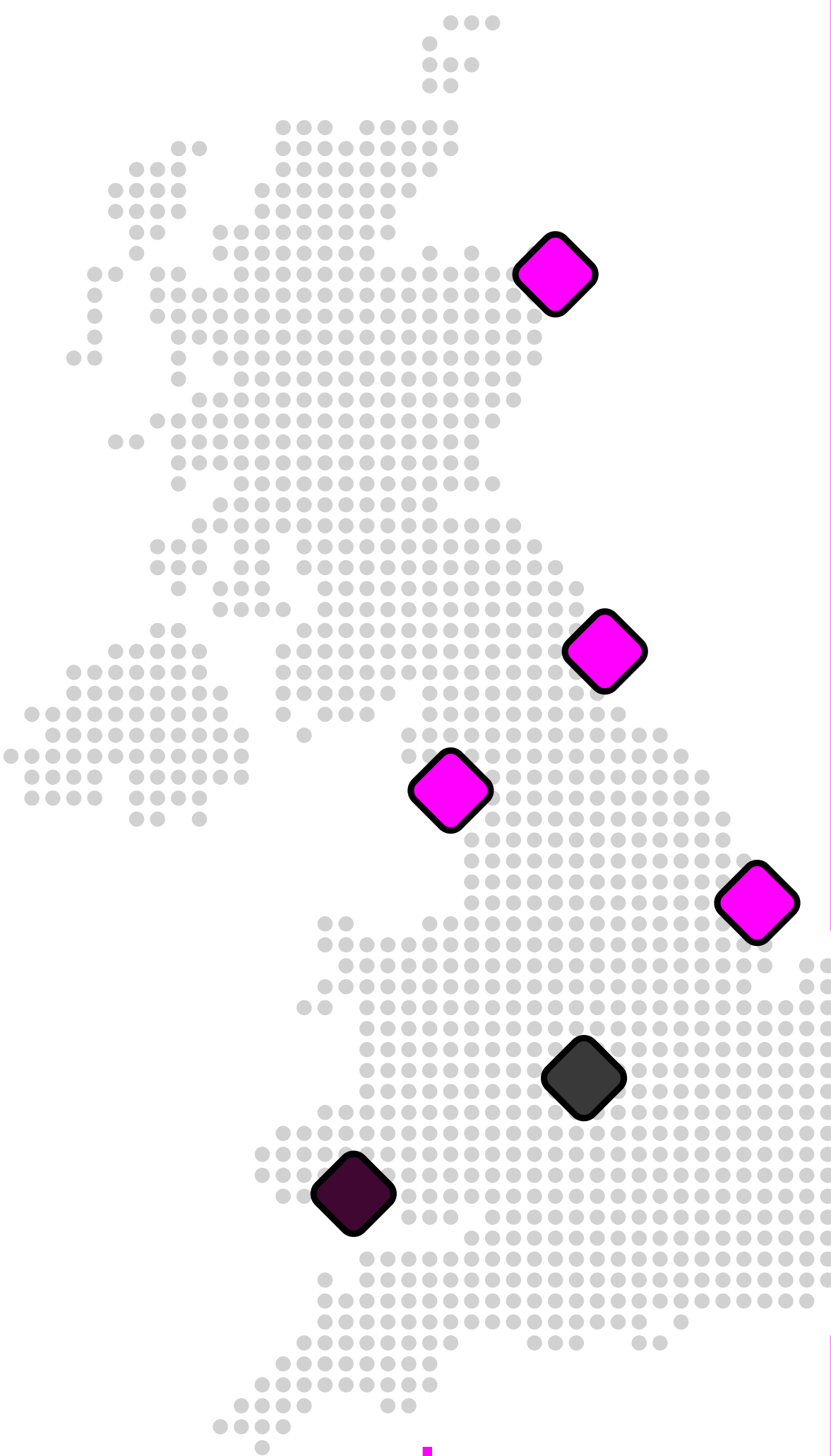
Britain's Energy Explained: June 2025

How was our electricity generated?



			change from previous month
Gas		17.7%	2.7% ▼
Wind		31.3%	4.6% ▲
Nuclear		14.6%	0.7% ▼
Biomass		6.8%	0.3% ▼
Solar		11.9%	0.3% ▲
Imports		14.8%	1.7% ▼
Hydro		1%	0.2% ▲
Storage		1.9%	0.3% ▲

Where has our gas come from?*



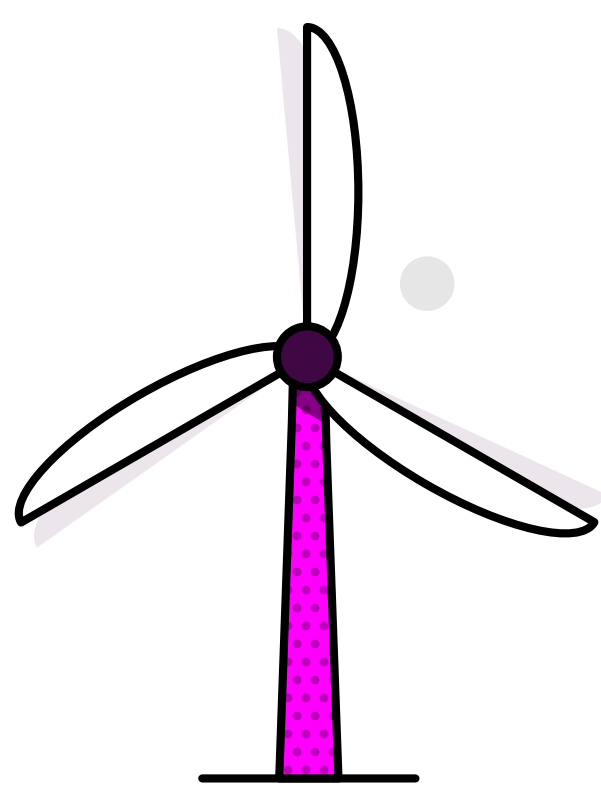
Entry Points			change from previous month
UK/Norwegian gas fields		87%	1% ▲
LNG imports		5%	2% ▼
European imports		0%	0% –
Storage withdrawal		8%	1% ▲

Where is our gas used?

Distribution networks		37%	5% ▼
Power stations		17%	2% ▼
EU & Ireland exports		40%	8% ▲
Industrial		2%	0% –
Storage		4%	3% ▼

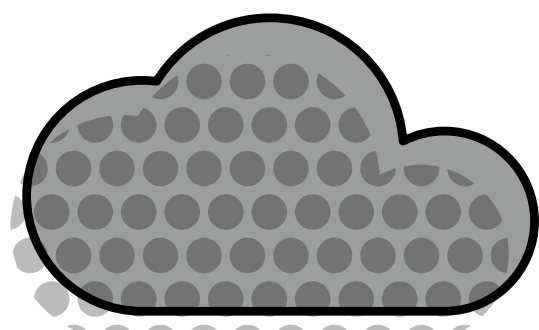
*Gas data is yet to reconcile. For most up-to-date gas data, visit data.nationalgas.com

Carbon intensity of electricity



Zero carbon

61% of electricity came from zero carbon sources
87% peak zero carbon share

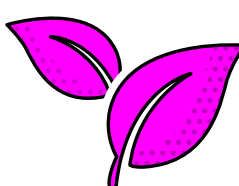


Carbon intensity

98 gCO₂/kWh average

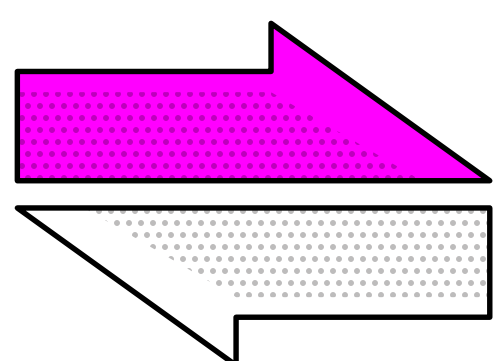


Greenest time of the month 12:30am on 3 June



Lowest carbon intensity **31** gCO₂/kWh

How much electricity we used



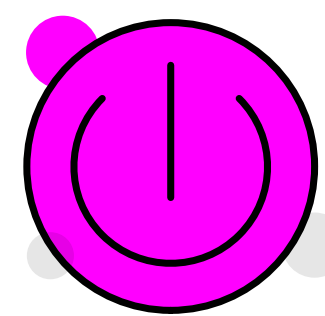
Imports & exports



Energy in
3,258 GWh

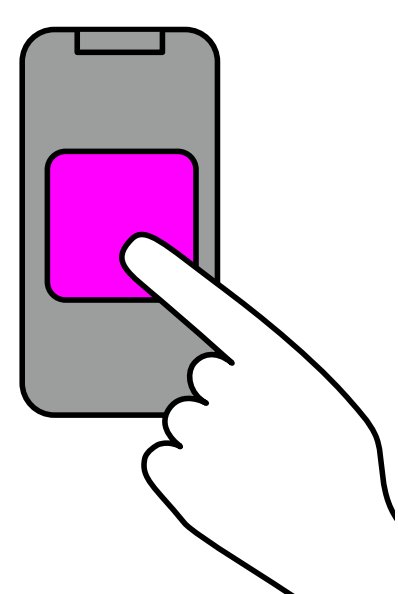
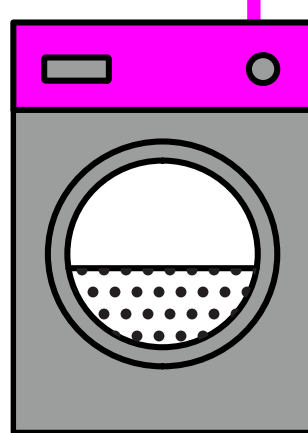


Energy out
1,124 GWh



Demand

21 TWh run through network
(that's 21 billion washing machine cycles).
Peak demand time was 6:30pm on 19 June.



View in real-time

To view our data in real-time, please
download the NESO app for Apple or Android.
Or visit carbonintensity.org.uk