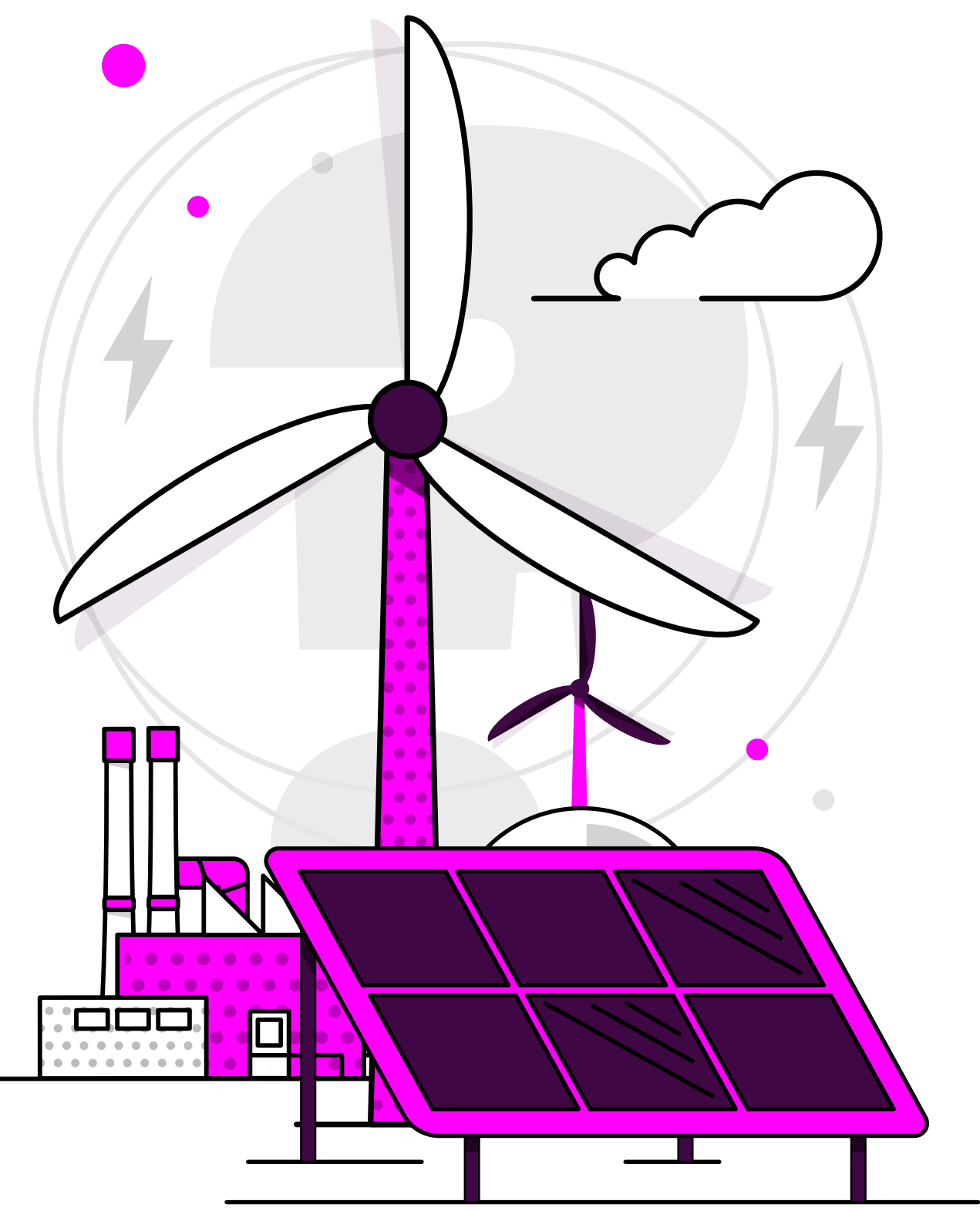


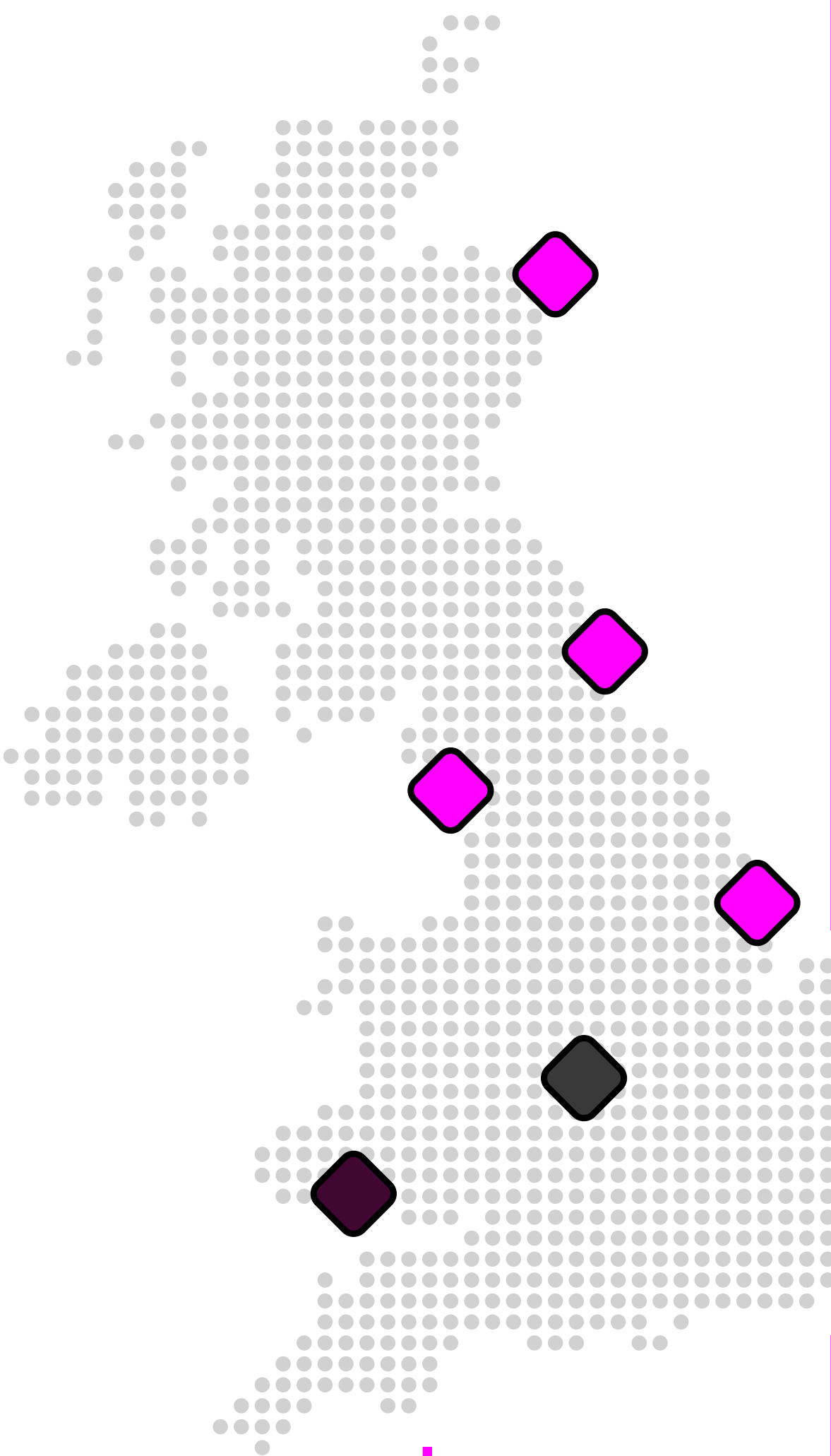
Britain's Energy Explained: May 2025

How was our electricity generated?



			change from previous month
Gas		20.4%	5.7% ▾
Wind		26.7%	4.3% ▴
Nuclear		15.3%	2.2% ▴
Biomass		7.1%	0.2% ▾
Solar		11.6%	1.1% ▴
Imports		16.5%	1.7% ▾
Hydro		0.8%	0.1% ▾
Storage		1.6%	0.1% ▴

Where has our gas come from?*



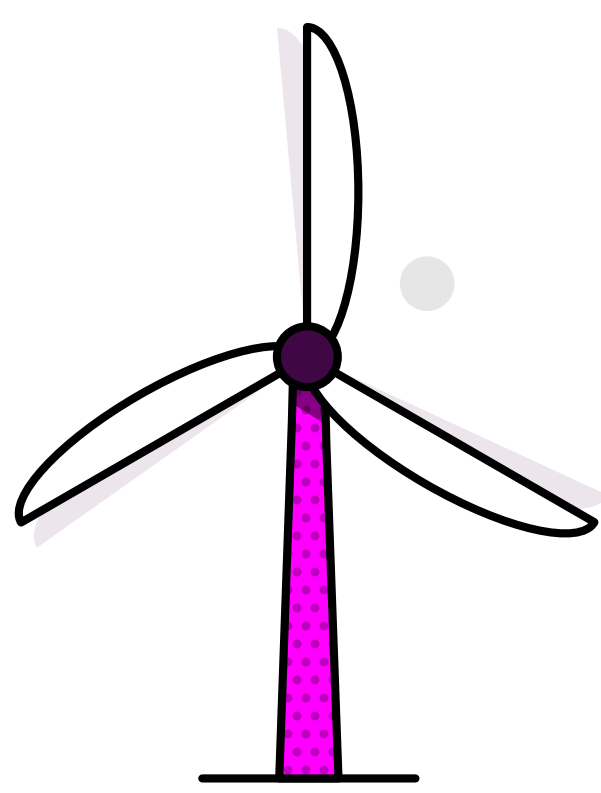
Entry Points			change from previous month
UK/Norwegian gas fields		86%	4% ▴
LNG imports		7%	2% ▾
European imports		0%	0% –
Storage withdrawal		7%	2% ▾

Where is our gas used?

Distribution networks		42%	10% ▾
Power stations		17%	2% ▾
EU & Ireland exports		32%	9% ▴
Industrial		2%	1% ▴
Storage		7%	2% ▴

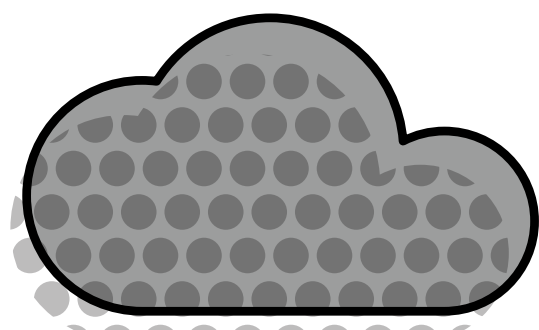
*Gas data is yet to reconcile. For most up-to-date gas data, visit data.nationalgas.com

Carbon intensity of electricity



Zero carbon

57% of electricity came from zero carbon sources
86% peak zero carbon share

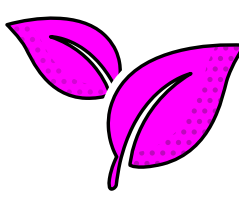


Carbon
intensity

106 gCO₂/kWh average

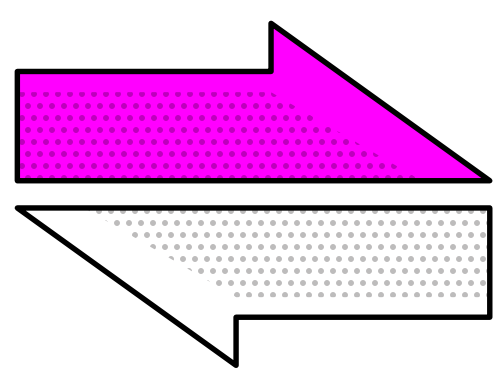


Greenest time of the month 11:30am on 29 May



Lowest carbon intensity **24** gCO₂/kWh

How much electricity we used



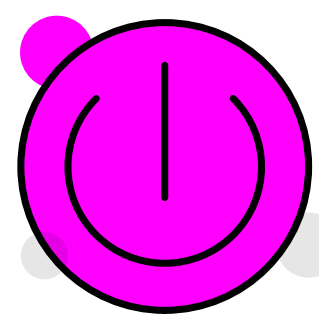
Imports
& exports



Energy in
3,594 GWh

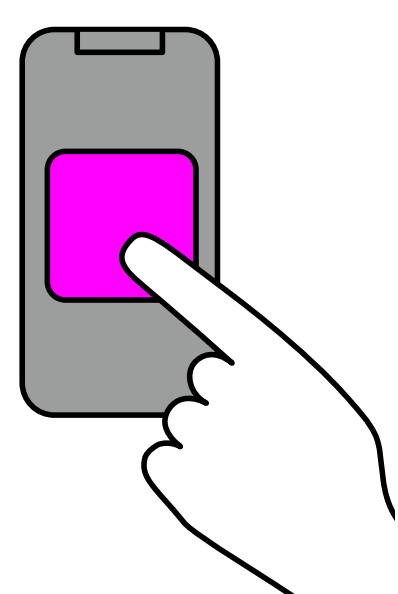
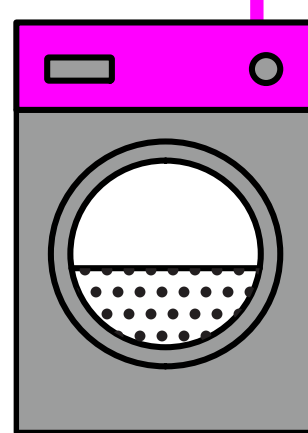


Energy out
901 GWh



Demand

21 TWh run through network
(that's 21 billion washing machine cycles).
Peak demand time was 7pm on 6 May.



View in
real-time

To view our data in real-time, please
download the NESO app for Apple or Android.
Or visit carbonintensity.org.uk