

NESO

National Electricity Transmission System Status report

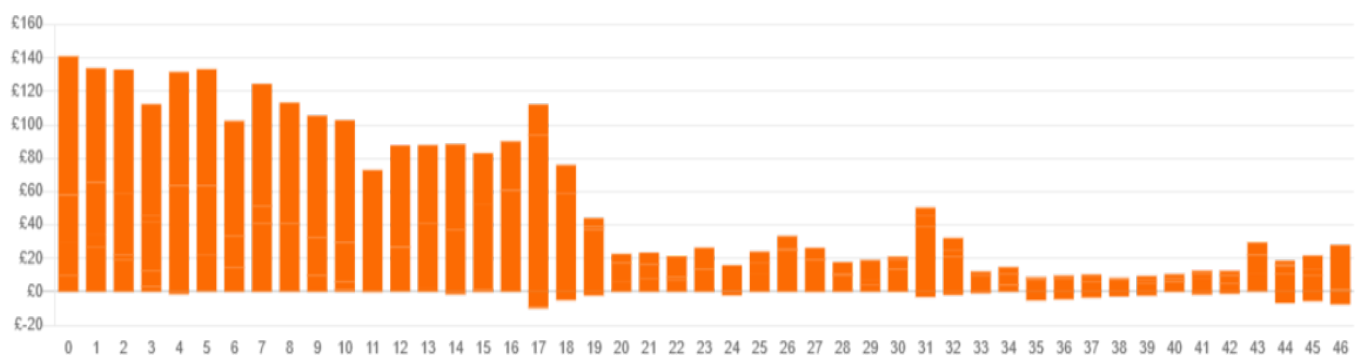
NESO National Electricity Transmission System Status Report
Monday 21 April 2025

Today's High Level Risk Status Forecast for the next 24h			
General Status		Voltage	
Demand		System Inertia	
System Margins		Weather	
Generation		Transmission	
Active Constraints			
System Warning			

Today's Minimum De-Rated Margin	13,479 MW (SP 39)	
Current BMU Largest Loss Risk	Generation	1500 MW
	Demand	560 MW

Balancing Costs

Last 24 hours' BM spend Total: £2545k



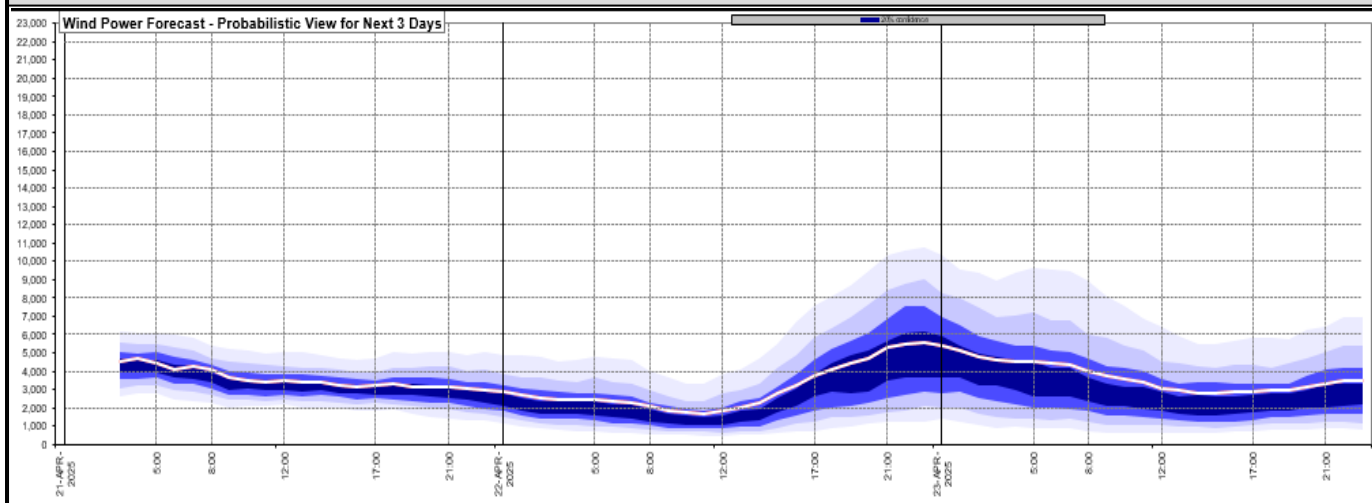
Yesterday's Market Summary

Cash Out Price (Max)	£130.0 / MWh (SP 32-34)
Cash Out Price (Min)	£59/ MWh (SP 26)
Peak Demand Yesterday	26,334 MW (SP 41)
Minimum Demand	18,650 MW

Interconnector Net Transfer Capacity (MWs)

Today	Import	Export	Remarks
Netherlands (BritNed)	1000	1000	Fully Available
France (IFA)	1000	1000	Partially Available - Planned Outage
Belgium (Nemo)	1000	1000	Fully Available
Ireland (EWIC)	0	0	Planned Outage
France (ElecLink)	1000	1000	Fully Available
Northern Ireland (MOYLE)	450	450	Fully Available
Norway (NSL)	1400	1400	Fully Available
France (IFA2)	1000	1000	Fully Available
Viking Link	1400	1400	Fully Available
Ireland (GreenLink)	500	500	Fully Available

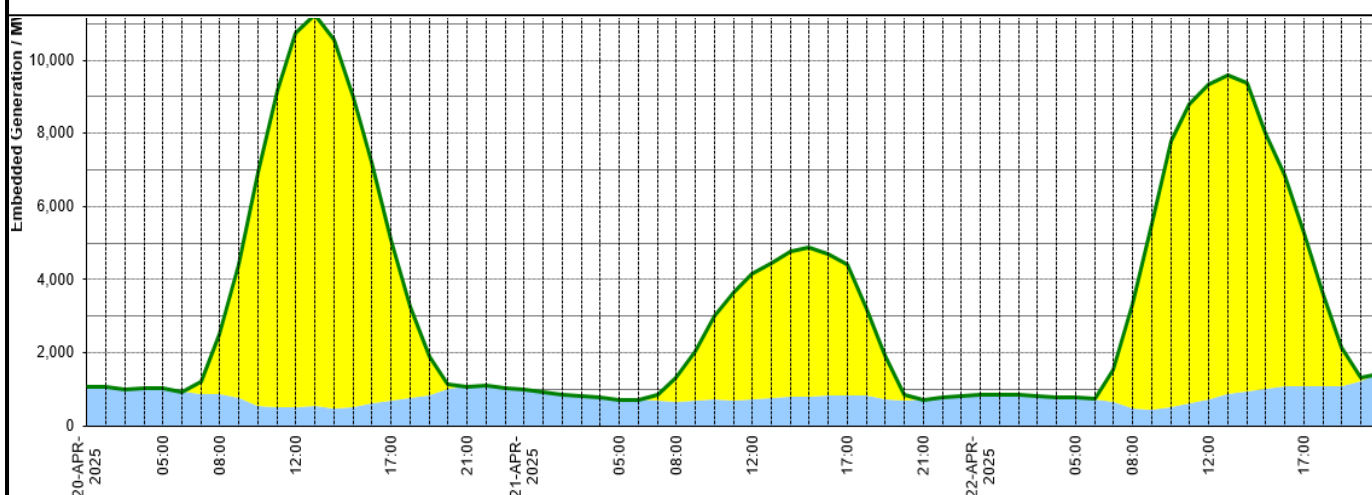
Wind Power Forecast



Expected embedded generation (MWs)

Embedded Generation Forecast

	20-APR-2025					21-APR-2025					22-APR-2025						
	05:00	08:00	12:00	17:00	21:00	00:00	05:00	08:00	12:00	17:00	21:00	00:00	05:00	08:00	12:00	17:00	21:00
Solar (MW)	0	1641	10217	4403	0	0	0	650	3436	3556	0	0	0	2847	8593	4188	0
Wind (MW)	1011	853	518	694	1078	974	717	655	714	839	720	840	760	469	729	1082	1440
STOR (MW)	0	0	0	0	0	0	0	0	0	0	0	0	0	0	0	0	0
Total (MW)	1011	2494	10735	5097	1078	974	717	1305	4150	4395	720	840	760	3316	9322	5270	1440



Weather	Source	Commentary
Latest forecast (Summary)	Met Office SEPA Natural Resources Wales	Today: Rather cloudy with rain continuing eastwards, sometimes heavy and thundery over England in the afternoon. Sunny spells and showers follow into western regions. Temperatures mostly around the seasonal norm. Tonight: Mostly dry at first with a few fog patches forming. Spells of rain arriving across Northern Ireland, then spreading into parts of Wales and western England by dawn. Chilly across parts of the northeast and southeast.
General Weather Concerns e.g. wind, rain, snow, flooding, GB Weather Warnings	Met Office Weather Warnings SEPA Natural Resources Wales	UK Weather Warnings No weather warnings are in force for the UK Flood Warnings 0 flood warning and 7 flood alerts issued for England. 0 flood warning and 0 flood alerts issued for Scotland. 0 flood warnings and 0 flood alerts issued for Wales.

Contains public sector information licensed under the Open Government Licence v1.0

Further Information	
BM Reports	https://www.elexon.co.uk/data/kinnect-insights-solution/
System Balancing Reports	https://www.neso.energy/industry-information/industry-data-and-reports/system-balancing-reports
Forecast Volumes and Costs	https://www.neso.energy/industry-information/industry-data-and-reports/forecast-volumes-and-costs