

# NESO

## National Electricity Transmission System

### Status report

NESO National Electricity Transmission System Status Report  
Tuesday 11 February 2025

| Today's High Level Risk Status Forecast for the next 24h |  |                |  |
|--|--|----------------|--|
| General Status   |  | Voltage        |  |
| Demand   |  | System Inertia |  |
| System Margins   |  | Weather        |  |
| Generation   |  | Transmission   |  |
| Active Constraints                                       |  |                |  |
| <a href="#">System Warning</a>                           |  |                |  |

|   |                   |         |
|---|-------------------|---------|
| <a href="#">Today's Minimum De-Rated Margin</a> | 11,738 MW (SP 37) |         |
| Current BMU Largest Loss Risk                   | Generation        | 1500 MW |
|   | Demand            | 560 MW  |

### Balancing Costs

Last 24 hours' BM spend      Total: £3856k



### Yesterday's Market Summary

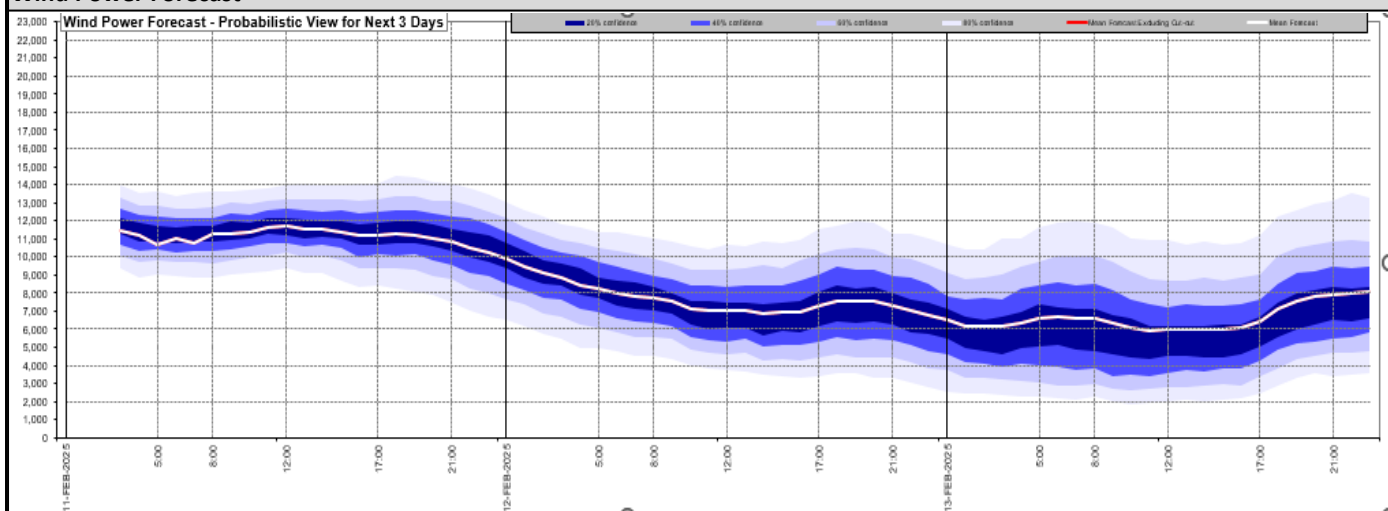
|                                       |                   |
|---------------------------------------|-------------------|
| <a href="#">Cash Out Price (Max)</a>  | 166 £/MWh (SP 13) |
| <a href="#">Cash Out Price (Min)</a>  | 67.5 £/MWh (SP 2) |
| <a href="#">Peak Demand Yesterday</a> | 45,890 MW         |
| <a href="#">Minimum Demand</a>        | 24,810 MW         |

### Interconnector

#### Net Transfer Capacity (MWs)

| Today                    | Import | Export | Remarks                            |
|--------------------------|--------|--------|------------------------------------|
| Netherlands (BritNed)    | 1000   | 1000   | Fully Available                    |
| France (IFA)             | 2000   | 2000   | Fully Available                    |
| Belgium (Nemo)           | 1000   | 1000   | Fully Available                    |
| Ireland (EWIC)           | 500    | 500    | Fully Available                    |
| France (ElecLink)        | 1000   | 1000   | Fully Available                    |
| Northern Ireland (MOYLE) | 450    | 450    | Fully Available                    |
| Norway (NSL)             | 1400   | 1400   | Fully Available                    |
| France (IFA2)            | 1000   | 1000   | Fully Available                    |
| Viking Link              | 700    | 700    | Partially Available - Pole 2 Fault |
| Ireland (GreenLink)      | 500    | 500    | Fully Available                    |

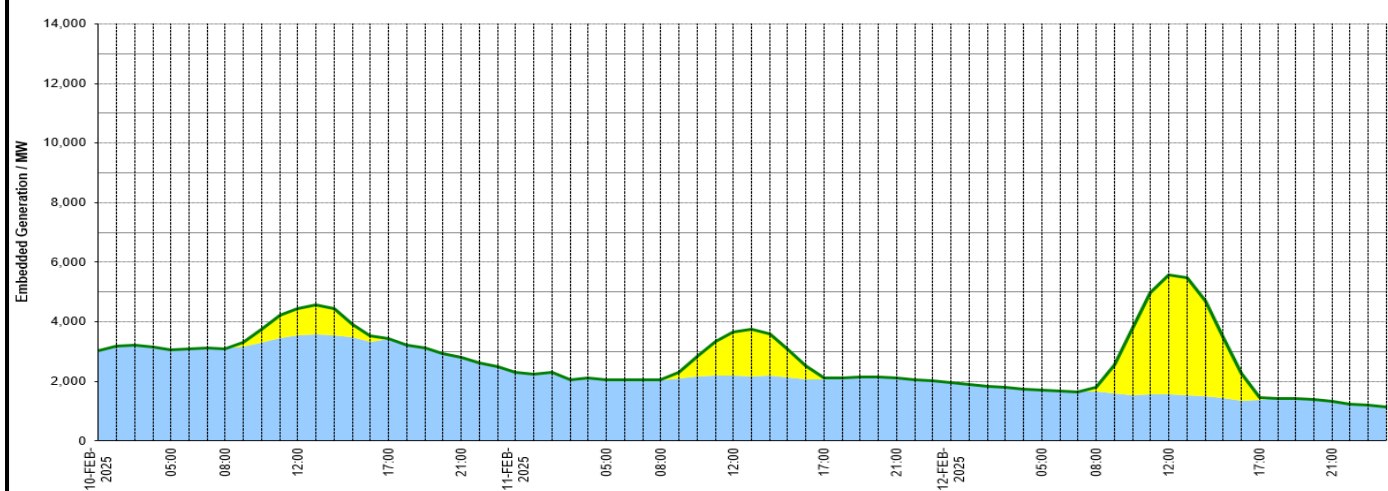
## Wind Power Forecast



## Expected embedded generation (MWs)

### Embedded Generation Forecast

| Embedded Generation (non-metered) Estimates |             |       |       |       |       |             |       |       |       |       |             |       |       |       |       |       | Last run: 11-Feb-2025 04:31:44 |  |  |
|---|-------------|-------|-------|-------|-------|-------------|-------|-------|-------|-------|-------------|-------|-------|-------|-------|-------|--------------------------------|--|--|
|   | 10-FEB-2025 |       |       |       |       | 11-FEB-2025 |       |       |       |       | 12-FEB-2025 |       |       |       |       |       |                                |  |  |
|   | 05:00       | 08:00 | 12:00 | 17:00 | 21:00 | 00:00       | 05:00 | 08:00 | 12:00 | 17:00 | 21:00       | 00:00 | 05:00 | 08:00 | 12:00 | 17:00 | 21:00                          |  |  |
| Solar (MW)                                  | 0           | 2     | 898   | 19    | 0     | 0           | 0     | 21    | 1482  | 19    | 0           | 0     | 0     | 162   | 3996  | 69    | 0                              |  |  |
| Wind (MW)                                   | 3055        | 3106  | 3556  | 3407  | 2820  | 2332        | 2067  | 2043  | 2187  | 2086  | 2115        | 1965  | 1715  | 1650  | 1584  | 1380  | 1330                           |  |  |
| STOR (MW)                                   | 0           | 0     | 0     | 0     | 0     | 0           | 0     | 0     | 0     | 0     | 0           | 0     | 0     | 0     | 0     | 0     | 0                              |  |  |
| Total (MW)                                  | 3055        | 3108  | 4454  | 3426  | 2820  | 2322        | 2067  | 2064  | 3669  | 2105  | 2115        | 1965  | 1715  | 1812  | 5580  | 1449  | 1330                           |  |  |



| Weather  | Source  | Commentary  |
|--|---|---|
| Latest forecast (Summary)  | <a href="#">Met Office</a><br><a href="#">SEPA</a><br><a href="#">Natural Resources Wales</a>                                     | <b>Today:</b><br>Tuesday will bring another grey and cold day, with some rain and hill snow in the north and east. A few sunny spells developing across northwest England and western Scotland. Breezy.<br><br><b>Tonight:</b><br>Rather cloudy with outbreaks of rain and drizzle across much of England, Wales and southern Scotland. Some cloud breaks will allow frost and patchy fog to develop across the west. |
| General Weather Concerns<br>e.g. wind, rain, snow, flooding, GB Weather Warnings | <a href="#">Met Office</a><br><a href="#">Weather Warnings</a><br><a href="#">SEPA</a><br><a href="#">Natural Resources Wales</a> | <b>UK Weather Warnings</b><br>No weather warnings are in force for the UK<br><br><b>Flood Warnings</b><br>8 flood warnings and 35 flood alerts issued for England.<br><br>0 flood warnings and 0 flood alerts issued for Scotland.<br><br>0 flood warnings and 0 flood alerts issued for Wales.   |

| Further Information        |   |
|----------------------------|---|
| BM Reports                 | <a href="https://www.elexon.co.uk/data/kinnect-insights-solution/">https://www.elexon.co.uk/data/kinnect-insights-solution/</a>   |
| System Balancing Reports   | <a href="https://www.neso.energy/industry-information/industry-data-and-reports/system-balancing-reports">https://www.neso.energy/industry-information/industry-data-and-reports/system-balancing-reports</a>     |
| Forecast Volumes and Costs | <a href="https://www.neso.energy/industry-information/industry-data-and-reports/forecast-volumes-and-costs">https://www.neso.energy/industry-information/industry-data-and-reports/forecast-volumes-and-costs</a> |