

NESO

National Electricity Transmission System Status report

NESO National Electricity Transmission System Status Report
Friday 06 December 2024

Today's High Level Risk Status Forecast for the next 24h			
General Status		Voltage	
Demand		System Inertia	
System Margins		Weather	
Generation		Transmission	
Active Constraints			
System Warning			

Today's Minimum De-Rated Margin	8,116 MW (SP 35)	
Current BMU Largest Loss Risk	Generation	1500 MW
	Demand	560 MW

Balancing Costs

Last 24 hours' BM spend Total: £5991k



Yesterday's Market Summary

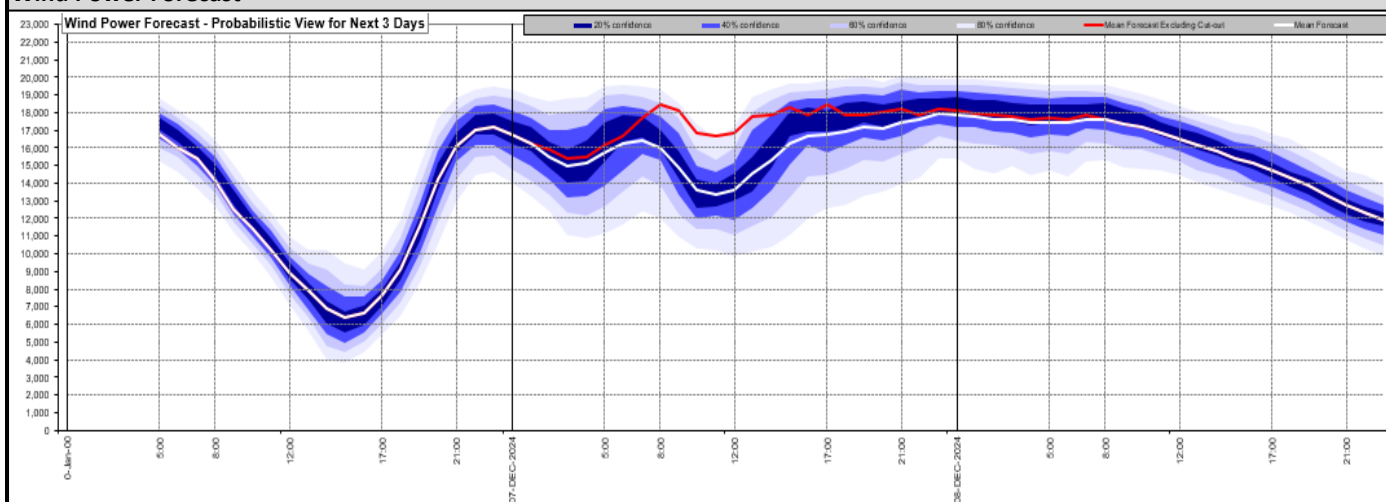
Cash Out Price (Max)	£131/MWh (SP 31)
Cash Out Price (Min)	£ 1.58/MWh (SP 3)
Peak Demand Yesterday	38,336 MW
Minimum Demand	20,730 MW

Interconnector

Net Transfer Capacity (MWs)

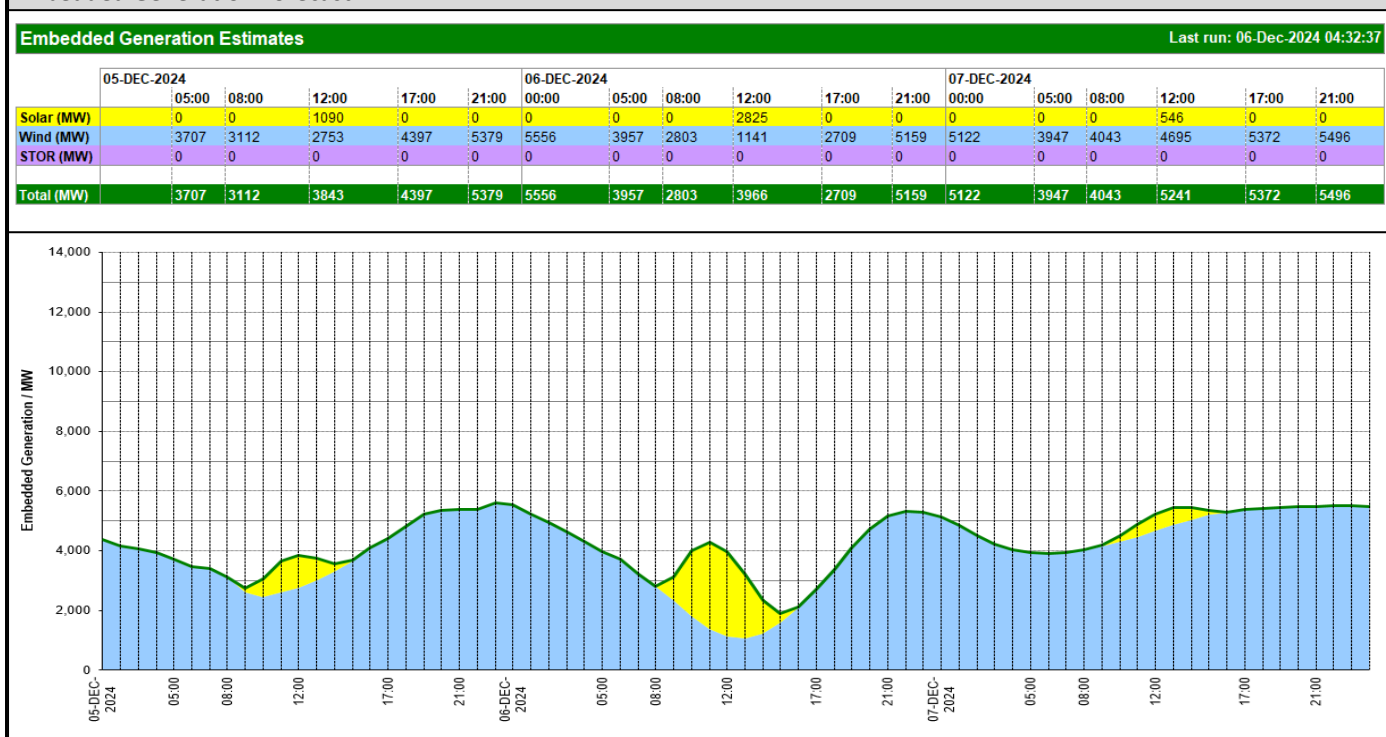
Today	Import	Export	Remarks
Netherlands (BritNed)	1000	1000	Fully Available
France (IFA)	2000	2000	Fully Available
Belgium (Nemo)	1000	1000	Fully Available
Ireland (EWIC)	500	500	Fully Available
France (ElecLink)	0	0	Outage
Northern Ireland (MOYLE)	450	450	Fully Available
Norway (NSL)	1400	1400	Fully Available
France (IFA2)	1000	1000	Fully Available
Viking Link	1430	1430	Fully Available
Ireland (GreenLink)	0	0	Not yet commissioned

Wind Power Forecast



Expected embedded generation (MWs)

Embedded Generation Forecast



Weather	Source	Commentary
Latest forecast (Summary)	Met Office SEPA Natural Resources Wales	Today: A fine but chilly start, with scattered showers affecting parts of north and west Scotland during the morning. Cloud building from the west with rain, heavy at times reaching western areas during the afternoon. Winds will strengthen, with gales developing. Tonight: Outbreaks of rain, heavy at times will move east overnight, as winds continue to strengthen with gales and later severe gales develop as Storm Darragh arrives. Mild
General Weather Concerns e.g. wind, rain, snow, flooding, GB Weather Warnings	Met Office Weather Warnings SEPA Natural Resources Wales	UK Weather Warnings Yellow warning of rain Areas affected: Northern Ireland Wales West Midlands Starts: 15:00 GMT on Fri 6 December Ends: 12:00 GMT on Sat 7 December Heavy rain associated with Storm Darragh could lead to some flooding and disruption. Yellow warning of wind Areas affected: East Midlands East of England London & South East England North

Weather	Source	Commentary
		<p>East England North West England Northern Ireland SW Scotland, Lothian Borders South West England Strathclyde Wales West Midlands Yorkshire & Humber</p> <p>Starts: 15:00 GMT on Fri 6 December Ends: 06:00 GMT on Sun 8 December Strong winds associated with Storm Darragh likely leading to some disruption and damage.</p> <p>Yellow warning of rain Areas affected: Central, Tayside & Fife Grampian SW Scotland, Lothian Borders Strathclyde</p> <p>Starts: 15:00 GMT on Fri 6 December Ends: 12:00 GMT on Sat 7 December Rain associated with Storm Darragh may lead to some transport disruption from late Friday through Saturday morning</p> <p>Amber warning of wind Areas affected: North West England Northern Ireland SW Scotland, Lothian Borders South West England Strathclyde Wales</p> <p>Starts: 03:00 GMT on Sat 7 December Ends: 21:00 GMT on Sat 7 December Potentially damaging winds associated with Storm Darragh</p> <p>Flood Warnings 0 severe flood warning, 20 flood warnings and 104 flood alerts issued for England. 0 severe flood warning, 0 flood warnings and 11 flood alerts issued for Scotland. 0 severe flood warning, 5 flood warnings and 31 flood alerts issued for Wales.</p>

Contains public sector information licensed under the Open Government Licence v1.0

Further Information	
BM Reports	https://www.elexon.co.uk/data/kinnect-insights-solution/
System Balancing Reports	https://www.neso.energy/industry-information/industry-data-and-reports/system-balancing-reports
Forecast Volumes and Costs	https://www.neso.energy/industry-information/industry-data-and-reports/forecast-volumes-and-costs