

Date:

Friday 23 Aug 2024

BSUoS Final Tariff: £7.63/MWh

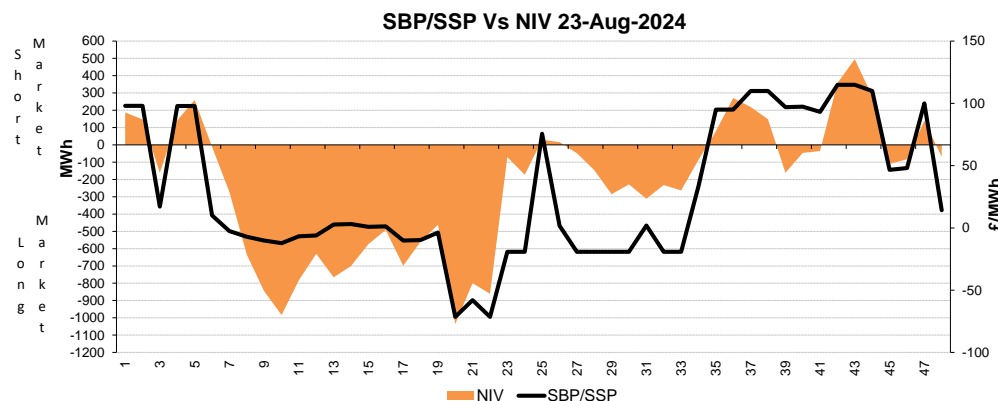
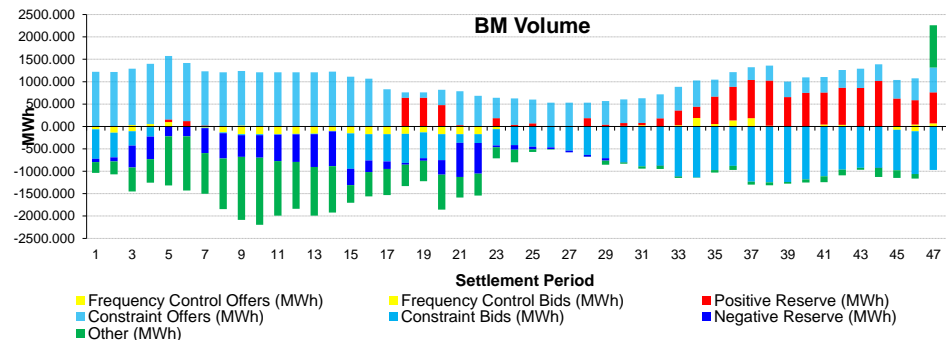
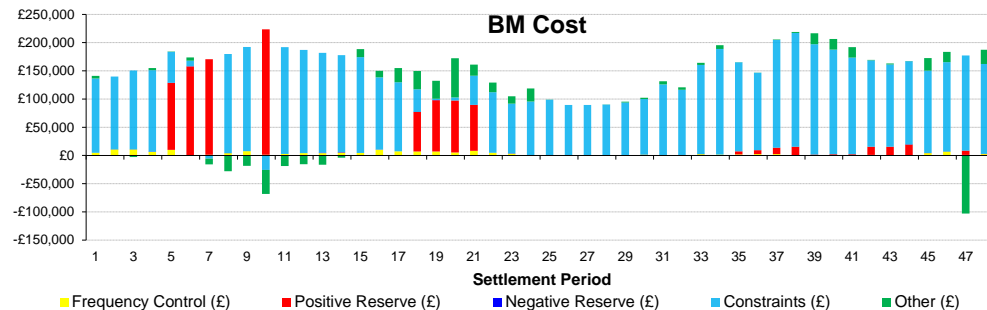
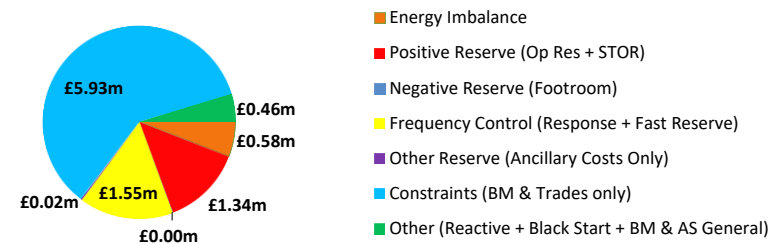
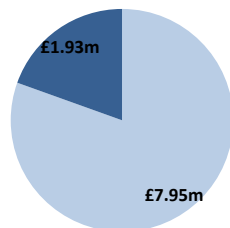
Total Outturn: £9.87m

Daily Balancing Costs

nationalgridESO

BM Cost (Indicative)

AS Cost (Estimate)



Commentary

The market was predominantly long throughout the day except for some short periods between 00:00-01:00, 01:30-02:30, 12:00-13:00, 17:00-19:00, 20:30-22:00, 23:00-23:30. Trades were required for Downward Regulation. Trades and BM Actions were required to manage thermal constraints in Scotland, the Midlands, and South England throughout the day. Trades and BM Actions supported Voltage Control. BM Actions further supported System Inertia.