

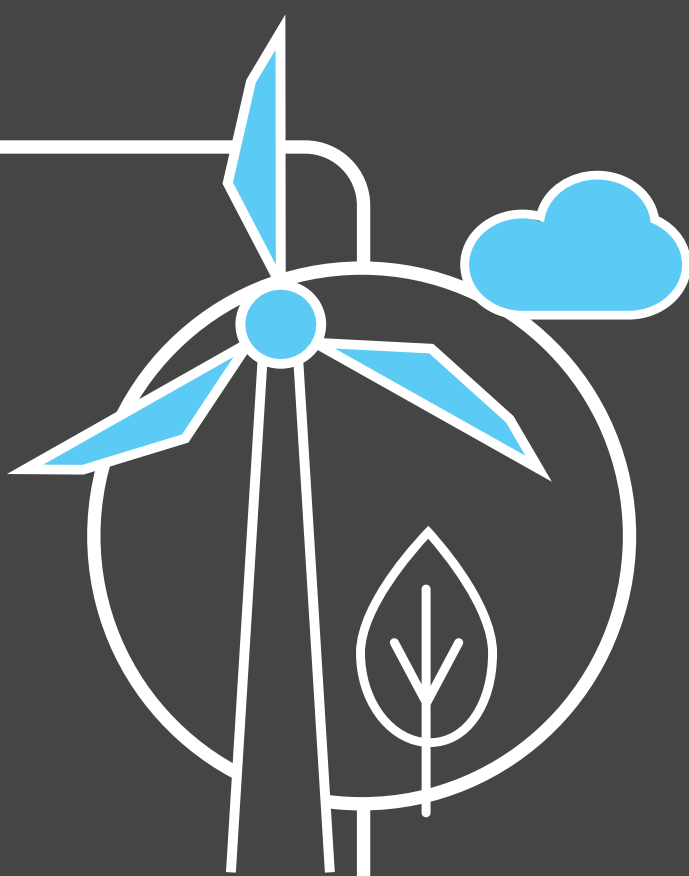
Britain's Electricity Explained: March 2024

ESO



Gas	24.3%
Wind	32.9%
Nuclear	11.7%
Biomass	5.3%
Coal	1.4%
Solar	4.1%
Imports	17.2%
Hydro	2.3%
Storage	1%

Zero carbon



51% of electricity came from zero carbon sources
84% peak zero carbon share

Carbon intensity



127 gCO₂/kWh average  Greenest time of the month
11am on 23 March

Coal



1.4% use this month
 This time **5 years ago** coal usage was **1.6%**
55 consecutive coal free hours

Imports & exports

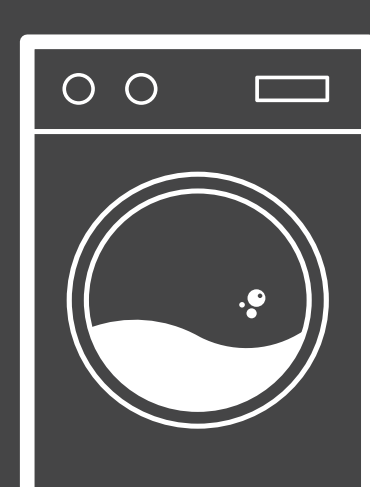


Energy in
4649 GWh



Energy out
642 GWh

Demand



24TWh run through network (that's 24 billion washing machine cycles).
 Peak demand time was **6pm on 11 March**.

View in real-time



To view our data in real-time, please download the ESO app for Apple or Android.
 Or visit carbonintensity.org.uk