

Date:

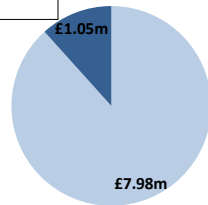
Sunday 21 Nov 2021

BSUoS Charge Estimate: £7.43/MWh

Total Outturn: £9.04m

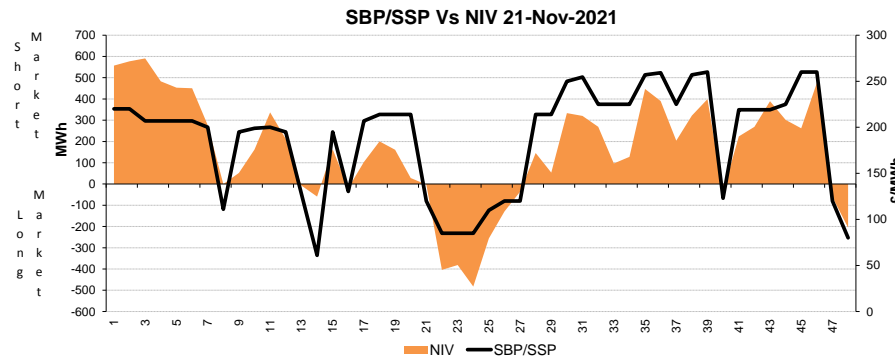
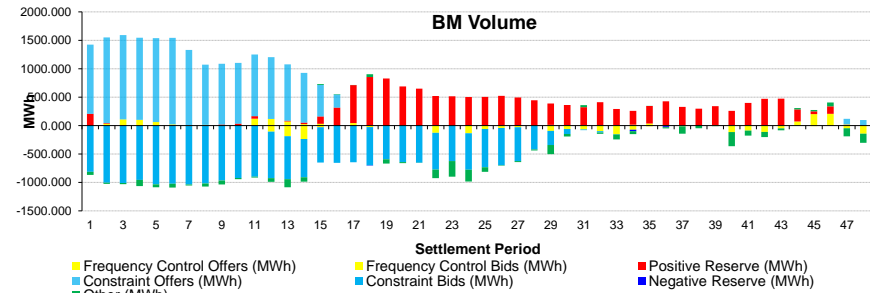
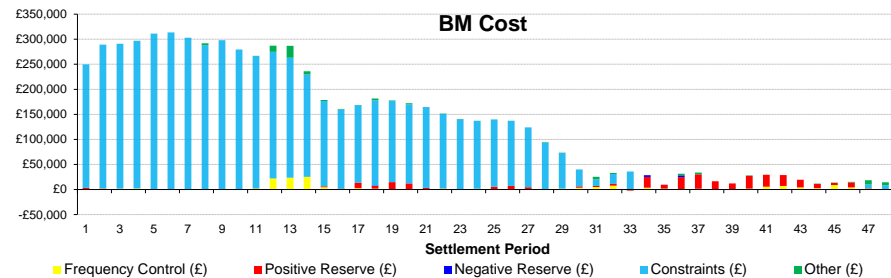
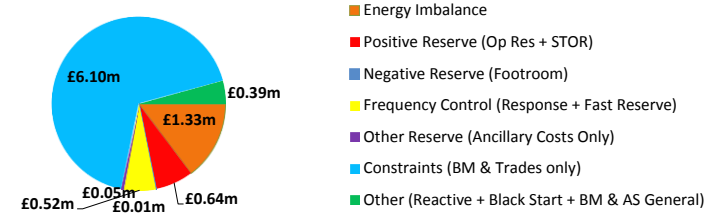
BM Cost (Indicative)

AS Cost (Estimate)



Daily Balancing Costs

nationalgridESO



Commentary

A short market overnight at the start of the day into the late morning, then becoming short again from early afternoon onwards into the night.

Overnight Trades and BM Action supported Voltage Control in the South of England, North East of England, and the Midlands. System Inertia was assisted by BM Action in the early hours and the morning, with some Trades in addition. BM Action alleviated thermal export constraints in the North of Scotland overnight and during the day until the late afternoon. BM Action managed thermal export constraints in the Wales area from the morning until just after midday.