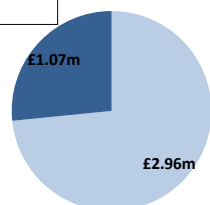


Date: Tuesday 11 Jan 2022

BSUoS Charge Estimate: £2.93/MWh  
Total Outturn: £4.03m

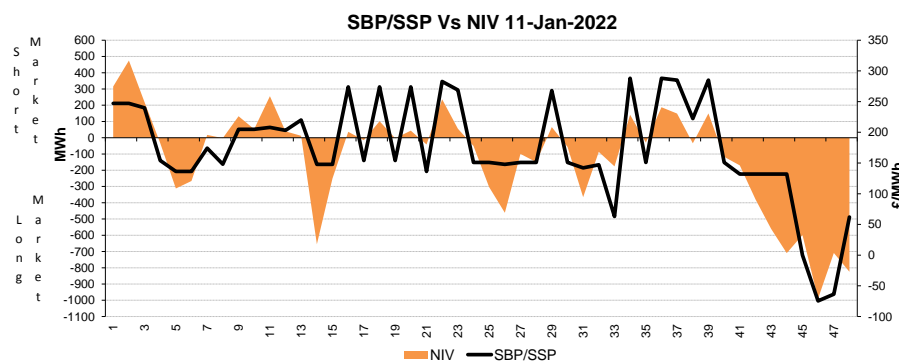
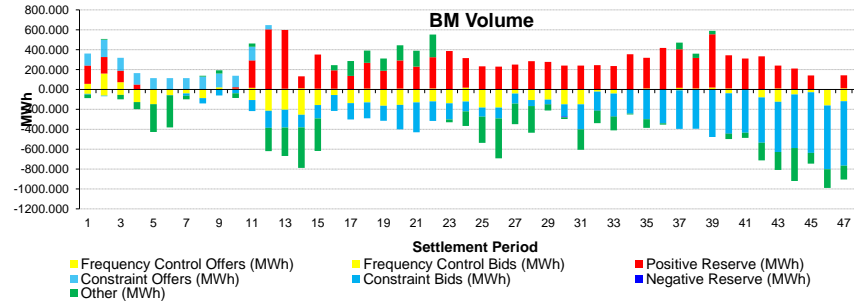
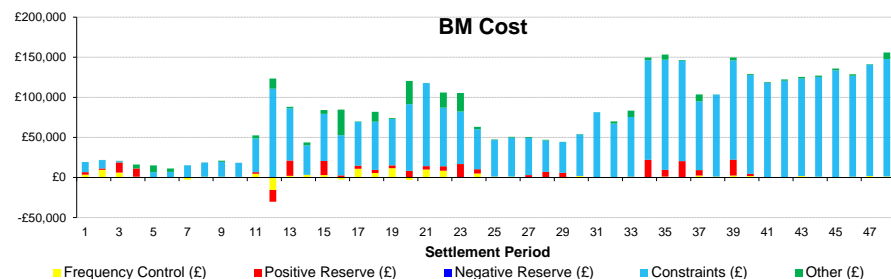
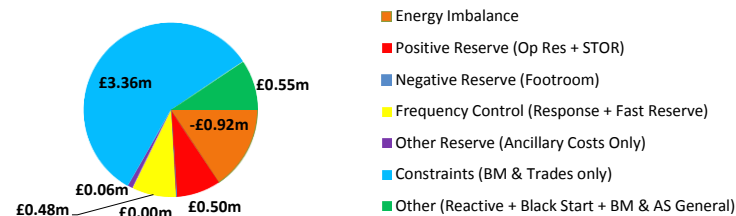
BM Cost (Indicative)

AS Cost (Estimate)



## Daily Balancing Costs

nationalgridESO



### Commentary

A mostly long market over the midday to early afternoon, and from evening onwards into the night. Interconnector Trades were required for Margin between 5am and 6am in the morning. 180MW of Non-BM Fast Reserve was run over the early morning period. BM Action supported Voltage Control in the Midlands area overnight. BM Action managed thermal export constraints in the North of Scotland from early morning onwards.