

Date:

Tuesday 16 May 2023

BSUoS Final Tariff: £13.41/MWh

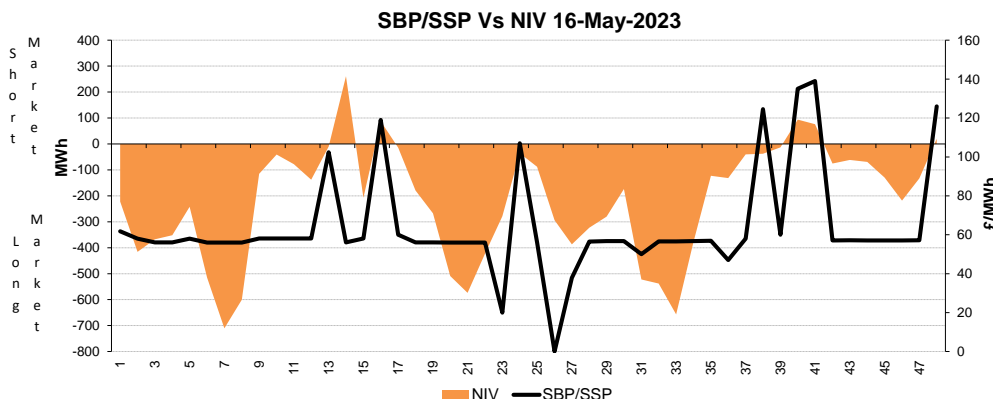
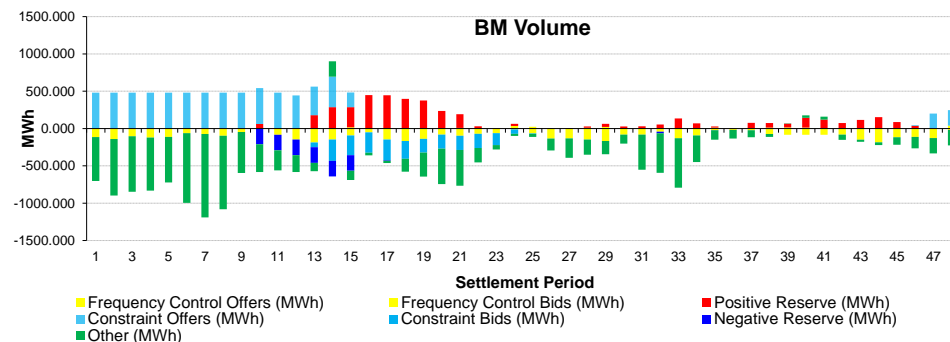
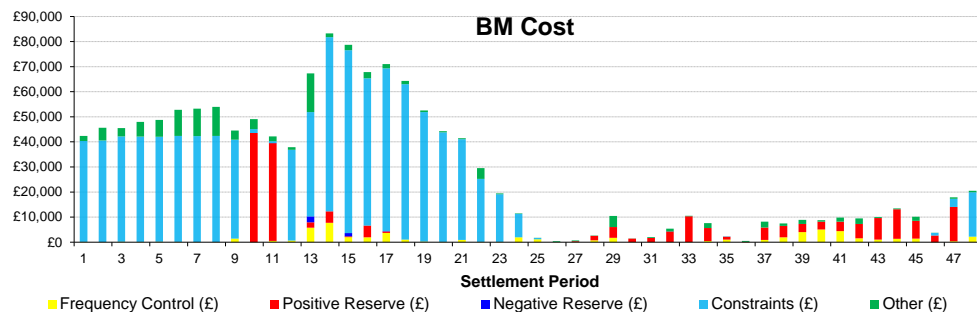
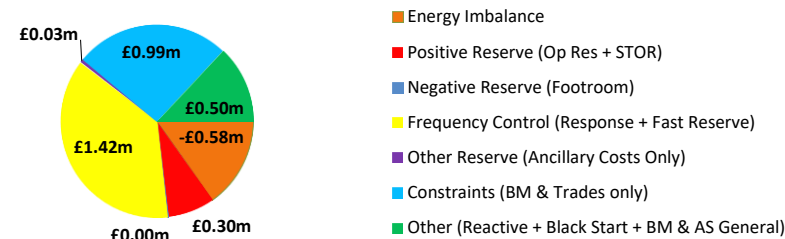
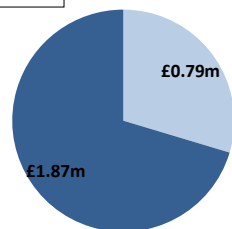
Total Outturn: £2.66m

# Daily Balancing Costs

**nationalgrid**ESO

BM Cost (Indicative)

AS Cost (Estimate)



## Commentary

The market was long throughout the day except for short periods between 06:00 and 09:00 and again between 19:00 and 21:00. Trades were required for Margin.

BM actions managed thermal export constraints in Scotland and North of England. Trades and BM Actions supported Voltage Control.