

Date:

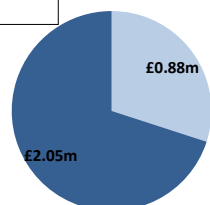
Tuesday 26 Apr 2022

BSUoS Charge Estimate: £2.96/MWh

Total Outturn: £2.93m

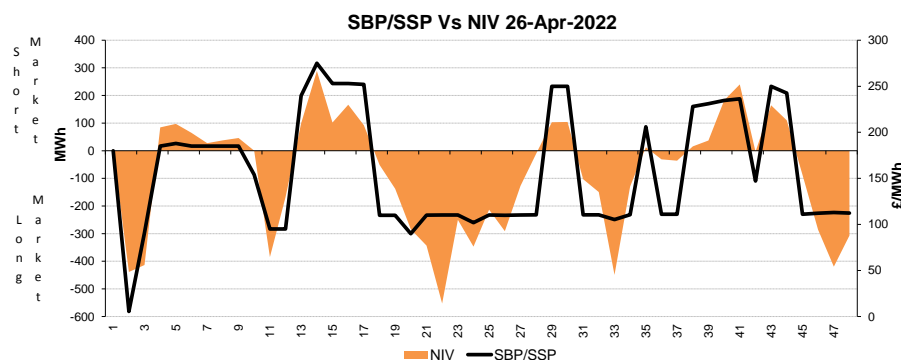
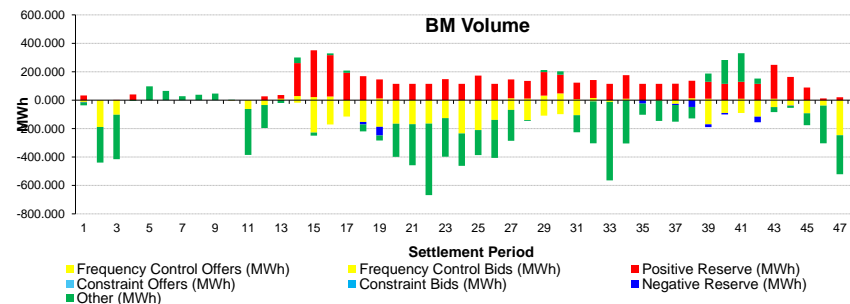
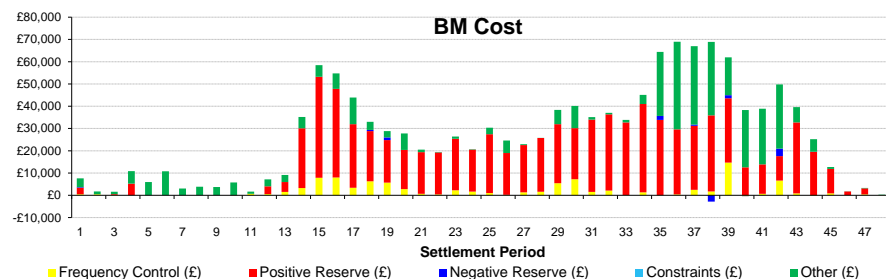
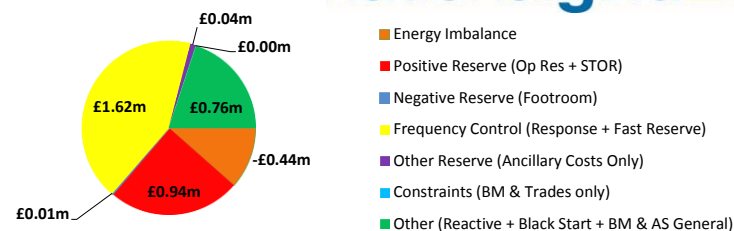
BM Cost (Indicative)

AS Cost (Estimate)



Daily Balancing Costs

nationalgridESO



Commentary

The market was long over the late morning to midday, during the afternoon, and in the late evening to overnight. Interconnector Trades were required for Margin over the late afternoon to evening period. Wind was very low in the night. All Voltage requirements met by the market, and no active constraints.