

Date:

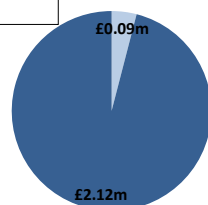
Friday 29 Apr 2022

BSUoS Charge Estimate: £2.36/MWh

Total Outturn: £2.20m

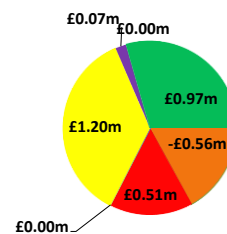
BM Cost (Indicative)

AS Cost (Estimate)

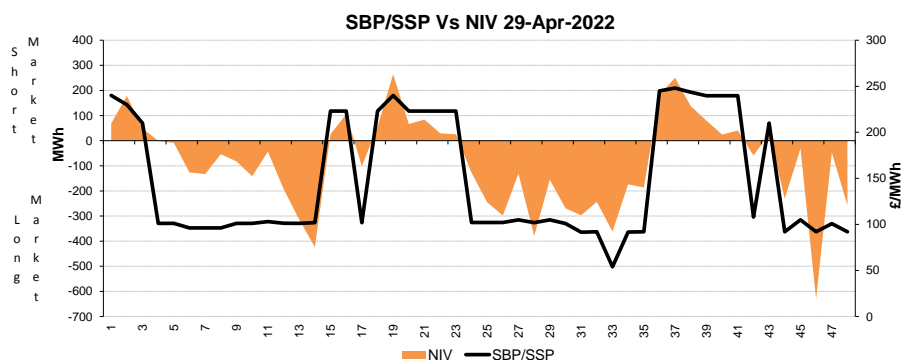
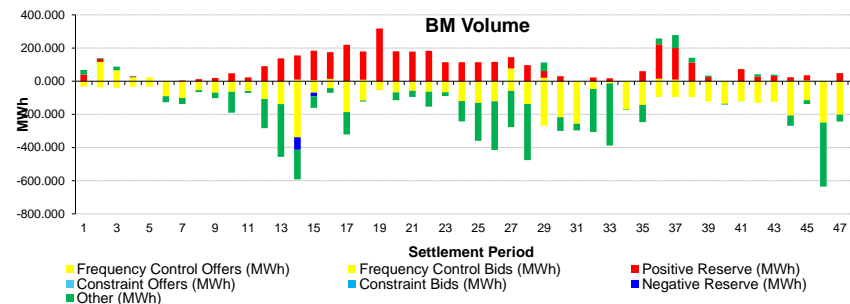
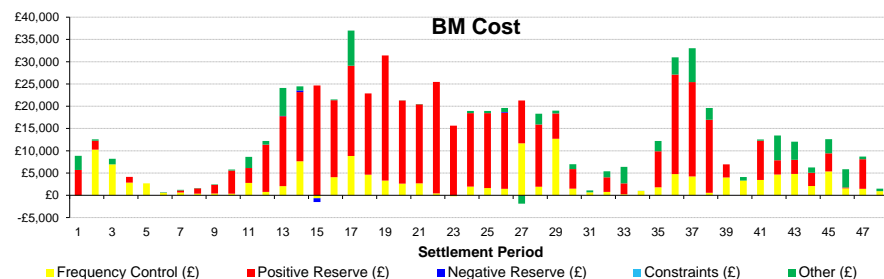


## Daily Balancing Costs

nationalgridESO



- Energy Imbalance
- Positive Reserve (Op Res + STOR)
- Negative Reserve (Footroom)
- Frequency Control (Response + Fast Reserve)
- Other Reserve (Ancillary Costs Only)
- Constraints (BM & Trades only)
- Other (Reactive + Black Start + BM & AS General)



### Commentary

The market was short between 7am to 11:30am in the morning, and during the late afternoon to early evening. 36MW of STOR was run over the evening. All Voltage requirements met by the market, and no BM Action was required for constraints.