

**GB Electricity**  
**System Operator Daily Report**



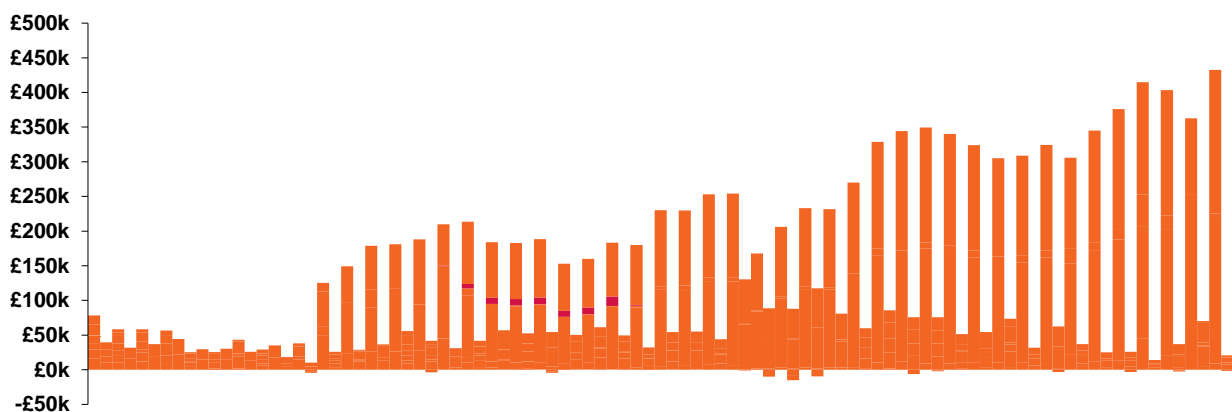
**GB Electricity System Operator Daily Report**  
Monday 03 June 2019

Today's High Level Risk Status Forecast for the next 24h			
General Status		Voltage	
Demand		System Inertia	
System Margins		Weather	
Generation		Transmission	
Active Constraints			

<u>Today's Minimum De-Rated Margin</u>	10720.76 (SP 38)	
<u>System Warnings</u>	None	
Current BMU Largest Loss Risk	Generation	Variable
	Demand	560MW

**Balancing Costs**

Last 24 hours' ENCC BM spend Total: £6412k



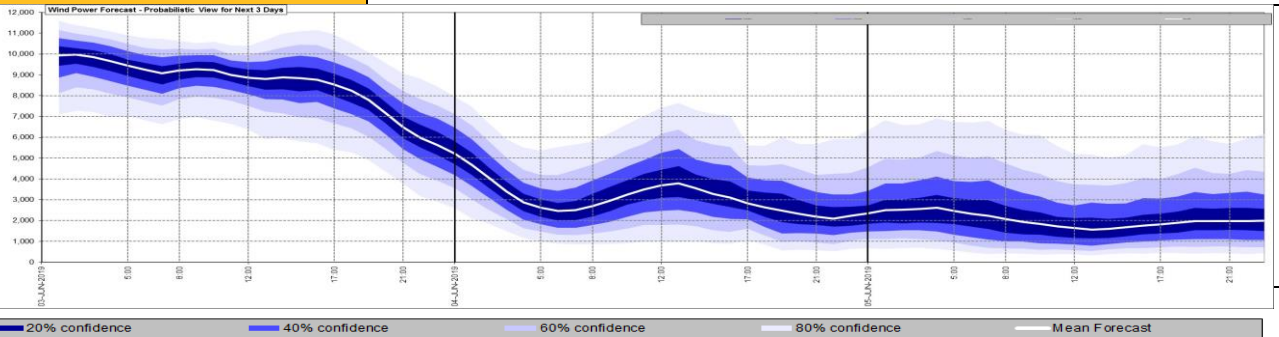
**Yesterday's Market Summary**

<u>Cash out price (Max)</u>	£54.00 /MWh (SP 1, 39 & 47)
<u>Cash Out Price (Min)</u>	£0.00 /MWh (SP 46)
<u>Peak Demand Yesterday</u>	24,412 MW

**Interconnectors**

Today	Import	Export	
Netherlands (BritNed)	1060	1060	Fully Available
France (IFA)	1500	1500	Pole 1 unavailable.
Belgium (Nemo)	1013	1013	Fully Available
Ireland (EWIC)	500	530	Fully Available
Northern Ireland (MOYLE)	395	500	Partially available.

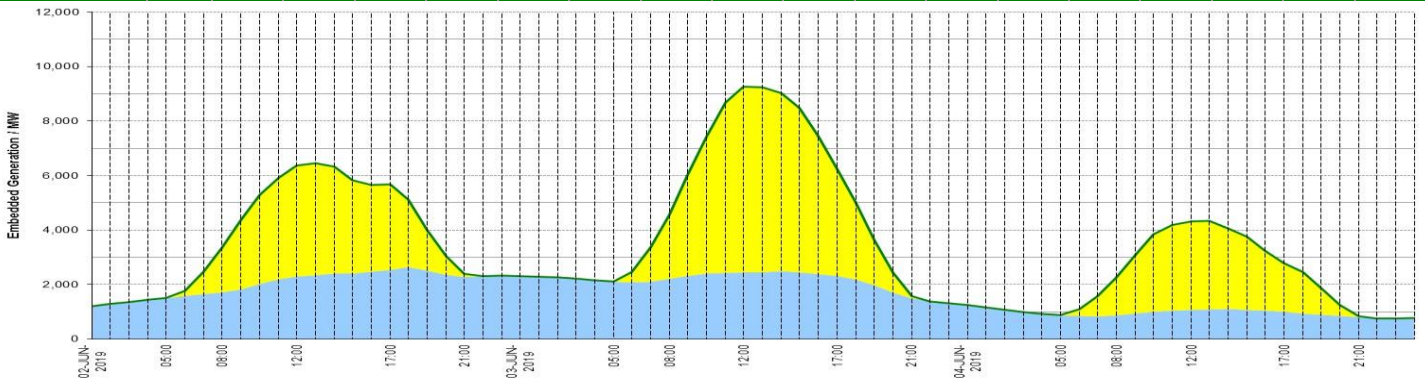
**Wind Power Forecast**



**Expected embedded generation (MW)**

**Embedded Generation Forecast**

	02-JUN-2019					03-JUN-2019					04-JUN-2019						
	05:00	08:00	12:00	17:00	21:00	00:00	05:00	08:00	12:00	17:00	21:00	00:00	05:00	08:00	12:00	17:00	21:00
<b>Solar (MW)</b>	1	1630	4060	3140	115	0	11	2361	6805	3925	81	0	0	1393	3241	1801	45
<b>Wind (MW)</b>	1502	1708	2304	2536	2282	2317	2111	2222	2440	2313	1501	1244	882	882	1073	993	801
<b>STOR (MW)</b>	0	0	0	0	0	0	0	0	0	0	0	0	0	0	0	0	0
<b>Total (MW)</b>	1503	3338	6364	5676	2397	2317	2122	4583	9250	6238	1583	1244	882	2275	4314	2794	846



Weather	Source	Commentary
11/05/2019 (Summary)	<a href="#">Met Office</a> <a href="#">SEPA</a> <a href="#">Natural Resources Wales</a>	<p><b>Today:</b> Windy in the north today with frequent showers in Scotland. Scattered showers and sunny spells elsewhere, but largely dry and bright in northern and southeast England. Feeling fresher compared to the weekend.</p> <p><b>Tonight:</b> Wind and showers easing for most with clear spells developing in the north and east. However, showers in the southwest and Wales merging into longer spells of rain later.</p>
General Weather Concerns e.g. wind, rain, snow, flooding, GB Weather Warnings	<a href="#">Met Office Weather</a> <a href="#">SEPA</a> <a href="#">Natural Resources Wales</a>	<p><b>Weather Warnings:</b> No weather warnings are in force for the UK.</p> <p><b>Flood Warnings:</b> No flood warnings are currently in force for England.</p>

*Contains public sector information licensed under the Open Government Licence v1.0*

Further Information	
BM Reports	<a href="https://www.bmreports.com">https://www.bmreports.com</a>
System Balancing Reports	<a href="https://www.nationalgrideso.com/balancing-data/system-balancing-reports">https://www.nationalgrideso.com/balancing-data/system-balancing-reports</a>
Forecast Volumes and Costs	<a href="https://www.nationalgrideso.com/balancing-data/forecast-volumes-and-costs">https://www.nationalgrideso.com/balancing-data/forecast-volumes-and-costs</a>
NGESO Insights	<a href="https://www.nationalgrideso.com/insights">https://www.nationalgrideso.com/insights</a>